

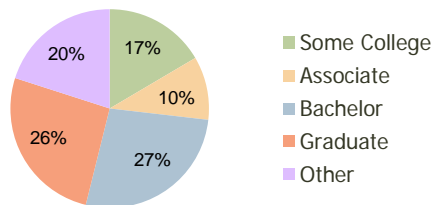
Newberry Square Gainesville, FL	1.00 Mile Radius	3.00 Mile Radius	5.00 Mile Radius
------------------------------------	---------------------	---------------------	---------------------

Current Year Demographics

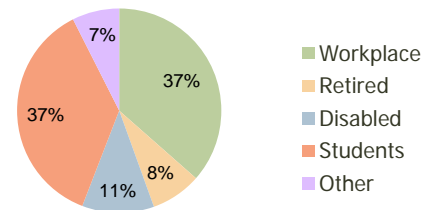
Current Population	7,914	50,838	124,929
Adjusted Total Pop (Carrier Route)	5,643	52,334	119,441
Total Daytime Pop	12,199	70,026	194,065
Workplace Pop	7,103	25,550	53,070
Average Household Income	\$63,670	\$75,163	\$69,006
Median Household Income	\$42,007	\$50,029	\$45,675
Total Housing Units	3,355	21,843	52,077
Median Home Value	\$173,267	\$171,644	\$166,847
Bachelors Degree	28.5%	27.0%	25.9%
Graduate Degree	18.8%	26.1%	27.4%
Total Consumer Spending/Capita	\$284	\$278	\$269

2016 Demographic Projections

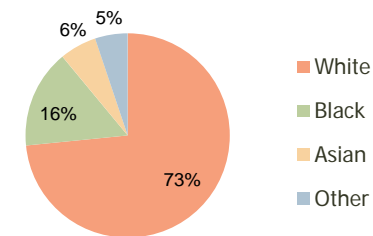
Projected Population	8,413	54,482	133,108
Projected 5 Year Pop Growth	1.2%	1.4%	1.3%
Projected Households	3,569	23,432	55,677
Projected 5 Year Household Growth	1.2%	1.4%	1.3%



Education (3-Mile)



Daytime Population (3-Mile)



Ethnicity (3-Mile)

This report was produced using data from private and government sources deemed to be reliable and is herein provided without representation or warranty.

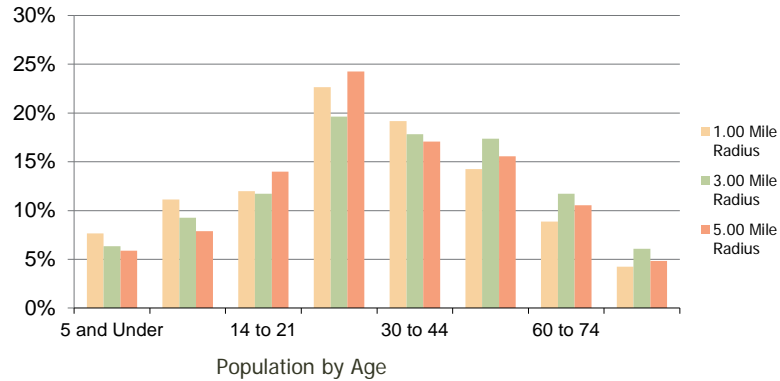
Newberry Square
Gainesville, FL

1.00 Mile
Radius

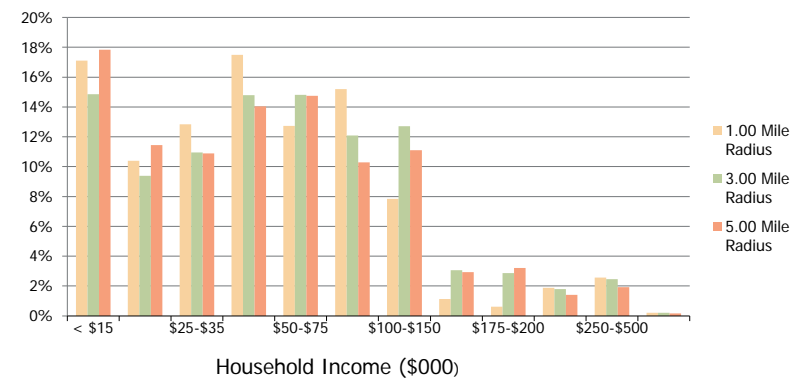
3.00 Mile
Radius

5.00 Mile
Radius

Population by Age Range



Household Income by Income Range



	1.00 Mile Radius	3.00 Mile Radius	5.00 Mile Radius
Population			
Current Estimated Population	7,914	50,838	124,929
2010 Census Population	7,881	50,385	124,228
2000 Census Population	6,135	41,491	103,026
Historical Annual Growth 2000 to 2010	2.54%	1.96%	1.89%
Estimated Annual Growth 2010 to 2011	0.24%	0.51%	0.32%
Projected Annual Growth 2011 to 2016	1.23%	1.39%	1.28%
Households			
Current Estimated Households	3,355	21,843	52,077
2010 Census Households	3,340	21,632	51,751
2000 Census Households	2,540	17,392	43,386
Historical Annual Growth 2000 to 2010	2.8%	2.2%	1.8%
Estimated Annual Growth 2010 to 2011	0.3%	0.6%	0.4%
Projected Annual Growth 2011 to 2016	1.2%	1.4%	1.3%
Population per Household	2.3	2.3	2.3
Ethnicity			
White	65.3%	73.4%	73.5%
Black or African American	22.5%	15.6%	13.8%
Asian & Pacific Islander	5.5%	5.8%	7.5%
Other Races	6.7%	5.2%	5.2%
Hispanic or Latino Population	11.5%	9.3%	10.1%
Non Hispanic or Latino Population	88.5%	90.7%	89.9%

This report was produced using data from private and government sources deemed to be reliable and is herein provided without representation or warranty.