

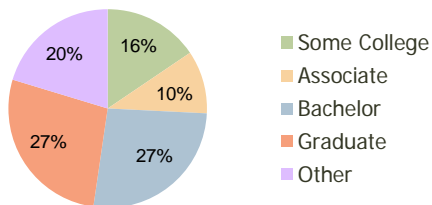
Millhopper Shopping Center Gainesville, FL	1.00 Mile Radius	3.00 Mile Radius	5.00 Mile Radius
---	---------------------	---------------------	---------------------

### Current Year Demographics

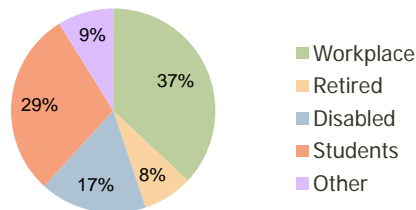
Current Population	7,464	74,407	157,767
Adjusted Total Pop (Carrier Route)	9,573	71,264	150,937
Total Daytime Pop	11,010	90,157	244,614
Workplace Pop	6,036	33,346	81,384
Average Household Income	\$87,231	\$64,138	\$57,617
Median Household Income	\$63,448	\$44,728	\$38,633
Total Housing Units	3,458	31,108	66,273
Median Home Value	\$162,930	\$155,532	\$147,267
Bachelors Degree	27.4%	26.5%	24.5%
Graduate Degree	31.9%	27.4%	24.6%
Total Consumer Spending/Capita	\$275	\$260	\$251

### 2016 Demographic Projections

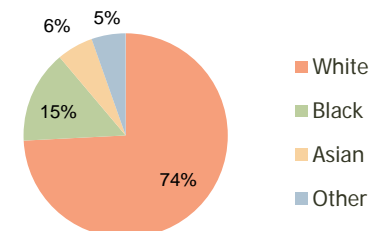
Projected Population	8,114	79,442	167,218
Projected 5 Year Pop Growth	1.7%	1.3%	1.2%
Projected Households	3,771	33,398	70,632
Projected 5 Year Household Growth	1.7%	1.4%	1.3%



Education (3-Mile)



Daytime Population (3-Mile)



Ethnicity (3-Mile)

This report was produced using data from private and government sources deemed to be reliable and is herein provided without representation or warranty.

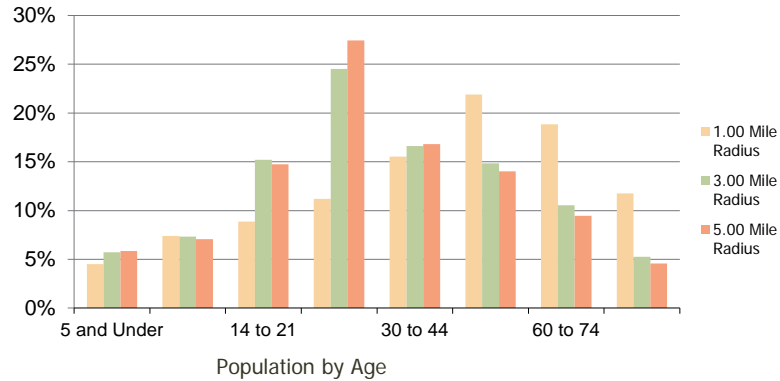
**Millhopper Shopping Center**  
Gainesville, FL

1.00 Mile  
Radius

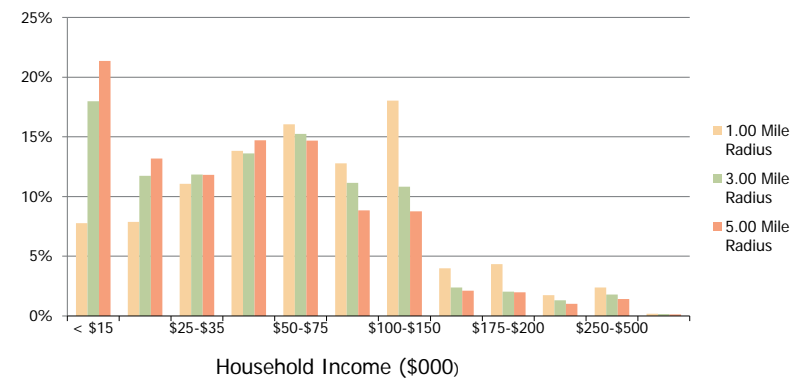
3.00 Mile  
Radius

5.00 Mile  
Radius

**Population by Age Range**



**Household Income by Income Range**



	1.00 Mile Radius	3.00 Mile Radius	5.00 Mile Radius
<b>Population</b>			
Current Estimated Population	7,464	74,407	157,767
2010 Census Population	7,337	74,002	157,100
2000 Census Population	7,611	62,854	142,117
Historical Annual Growth 2000 to 2010	-0.37%	1.65%	1.01%
Estimated Annual Growth 2010 to 2011	0.99%	0.31%	0.24%
Projected Annual Growth 2011 to 2016	1.68%	1.32%	1.17%
<b>Households</b>			
Current Estimated Households	3,458	31,108	66,273
2010 Census Households	3,392	30,909	65,914
2000 Census Households	3,257	26,991	59,554
Historical Annual Growth 2000 to 2010	0.4%	1.4%	1.0%
Estimated Annual Growth 2010 to 2011	1.1%	0.4%	0.3%
Projected Annual Growth 2011 to 2016	1.7%	1.4%	1.3%
Population per Household	2.1	2.2	2.2
<b>Ethnicity</b>			
White	87.8%	74.2%	70.1%
Black or African American	5.6%	14.6%	17.5%
Asian & Pacific Islander	3.1%	5.8%	7.1%
Other Races	3.5%	5.4%	5.3%
Hispanic or Latino Population	6.4%	10.2%	10.0%
Non Hispanic or Latino Population	93.6%	89.8%	90.0%

This report was produced using data from private and government sources deemed to be reliable and is herein provided without representation or warranty.