

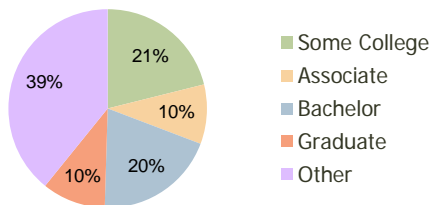
| Welleby Plaza<br>Sunrise, FL | 1.00 Mile<br>Radius | 3.00 Mile<br>Radius | 5.00 Mile<br>Radius |
|------------------------------|---------------------|---------------------|---------------------|
|------------------------------|---------------------|---------------------|---------------------|

### Current Year Demographics

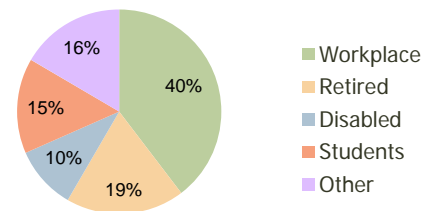
|                                    |           |           |           |
|------------------------------------|-----------|-----------|-----------|
| Current Population                 | 21,743    | 126,607   | 317,477   |
| Adjusted Total Pop (Carrier Route) | 24,184    | 137,755   | 344,326   |
| Total Daytime Pop                  | 15,570    | 105,308   | 278,895   |
| Workplace Pop                      | 4,665     | 41,743    | 113,209   |
| Average Household Income           | \$59,681  | \$64,605  | \$63,834  |
| Median Household Income            | \$48,367  | \$50,837  | \$48,609  |
| Total Housing Units                | 8,928     | 52,486    | 127,560   |
| Median Home Value                  | \$118,422 | \$131,761 | \$129,331 |
| Bachelors Degree                   | 16.9%     | 19.7%     | 18.3%     |
| Graduate Degree                    | 8.7%      | 10.3%     | 9.7%      |
| Total Consumer Spending/Capita     | \$286     | \$288     | \$287     |

### 2016 Demographic Projections

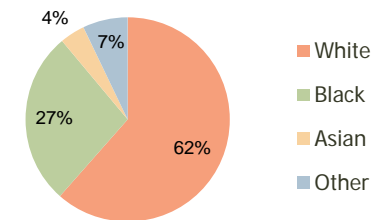
|                                   |        |         |         |
|-----------------------------------|--------|---------|---------|
| Projected Population              | 23,864 | 137,019 | 338,588 |
| Projected 5 Year Pop Growth       | 1.9%   | 1.6%    | 1.3%    |
| Projected Households              | 9,841  | 56,758  | 136,034 |
| Projected 5 Year Household Growth | 2.0%   | 1.6%    | 1.3%    |



Education (3-Mile)



Daytime Population (3-Mile)

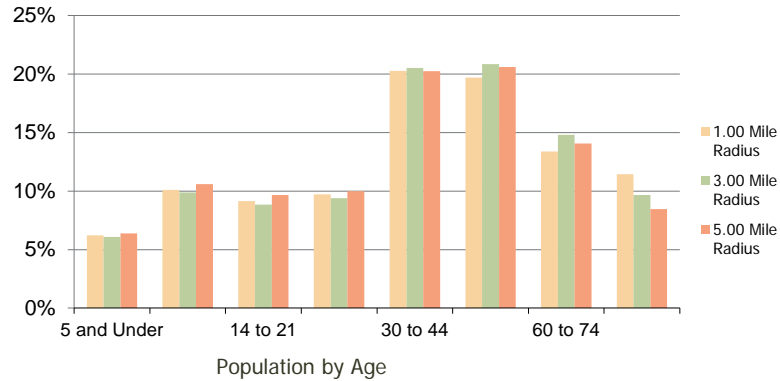


Ethnicity (3-Mile)

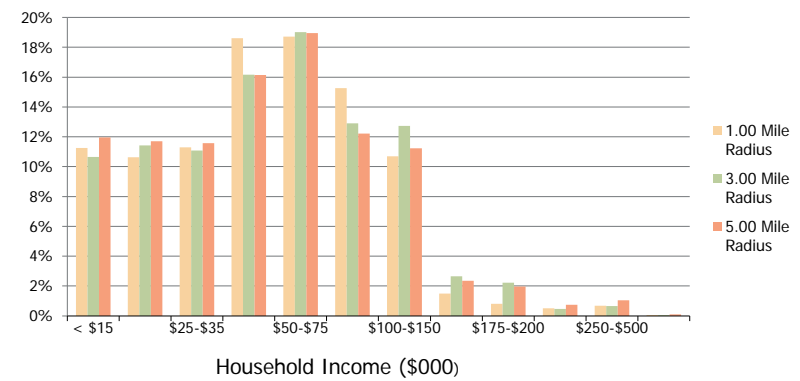
This report was produced using data from private and government sources deemed to be reliable and is herein provided without representation or warranty.

|                                     |                  |                  |                  |
|-------------------------------------|------------------|------------------|------------------|
| <b>Welleby Plaza</b><br>Sunrise, FL | 1.00 Mile Radius | 3.00 Mile Radius | 5.00 Mile Radius |
|-------------------------------------|------------------|------------------|------------------|

**Population by Age Range**



**Household Income by Income Range**



|                                       | 1.00 Mile Radius | 3.00 Mile Radius | 5.00 Mile Radius |
|---------------------------------------|------------------|------------------|------------------|
| <b>Population</b>                     |                  |                  |                  |
| Current Estimated Population          | 21,743           | 126,607          | 317,477          |
| 2010 Census Population                | 21,115           | 125,942          | 316,514          |
| 2000 Census Population                | 22,199           | 123,601          | 308,411          |
| Historical Annual Growth 2000 to 2010 | -0.50%           | 0.19%            | 0.26%            |
| Estimated Annual Growth 2010 to 2011  | 1.69%            | 0.30%            | 0.17%            |
| Projected Annual Growth 2011 to 2016  | 1.88%            | 1.59%            | 1.30%            |
| <b>Households</b>                     |                  |                  |                  |
| Current Estimated Households          | 8,928            | 52,486           | 127,560          |
| 2010 Census Households                | 8,680            | 52,315           | 127,325          |
| 2000 Census Households                | 9,113            | 52,504           | 127,069          |
| Historical Annual Growth 2000 to 2010 | -0.5%            | 0.0%             | 0.0%             |
| Estimated Annual Growth 2010 to 2011  | 1.6%             | 0.2%             | 0.1%             |
| Projected Annual Growth 2011 to 2016  | 2.0%             | 1.6%             | 1.3%             |
| Population per Household              | 2.4              | 2.4              | 2.5              |
| <b>Ethnicity</b>                      |                  |                  |                  |
| White                                 | 63.5%            | 61.5%            | 55.3%            |
| Black or African American             | 24.2%            | 27.4%            | 34.8%            |
| Asian & Pacific Islander              | 4.4%             | 4.0%             | 3.2%             |
| Other Races                           | 7.9%             | 7.1%             | 6.7%             |
| Hispanic or Latino Population         | 25.8%            | 23.5%            | 20.8%            |
| Non Hispanic or Latino Population     | 74.2%            | 76.5%            | 79.2%            |

This report was produced using data from private and government sources deemed to be reliable and is herein provided without representation or warranty.