

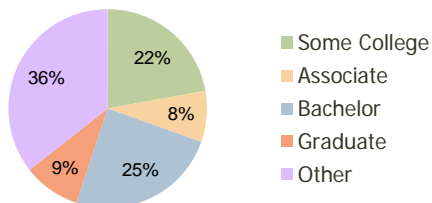
Russell Ridge Lawrenceville, GA	1.00 Mile Radius	3.00 Mile Radius	5.00 Mile Radius
------------------------------------	---------------------	---------------------	---------------------

Current Year Demographics

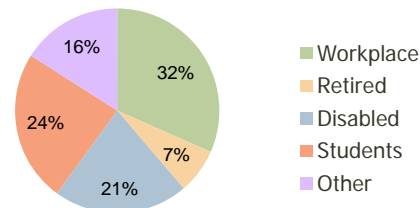
Current Population	6,288	59,631	159,782
Adjusted Total Pop (Carrier Route)	6,654	57,758	163,226
Total Daytime Pop	3,329	46,760	140,329
Workplace Pop	765	14,785	55,401
Average Household Income	\$88,184	\$81,919	\$79,385
Median Household Income	\$77,923	\$71,443	\$66,823
Total Housing Units	2,014	19,147	52,007
Median Home Value	\$157,328	\$151,323	\$148,539
Bachelors Degree	27.3%	24.6%	24.2%
Graduate Degree	8.7%	9.3%	10.3%
Total Consumer Spending/Capita	\$0	\$236	\$262

2016 Demographic Projections

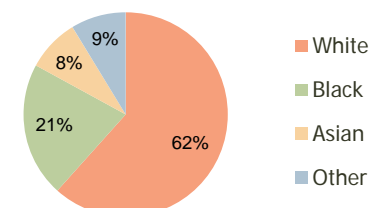
Projected Population	7,343	72,126	190,768
Projected 5 Year Pop Growth	3.2%	3.9%	3.6%
Projected Households	2,354	23,523	62,461
Projected 5 Year Household Growth	3.2%	4.2%	3.7%



Education (3-Mile)



Daytime Population (3-Mile)

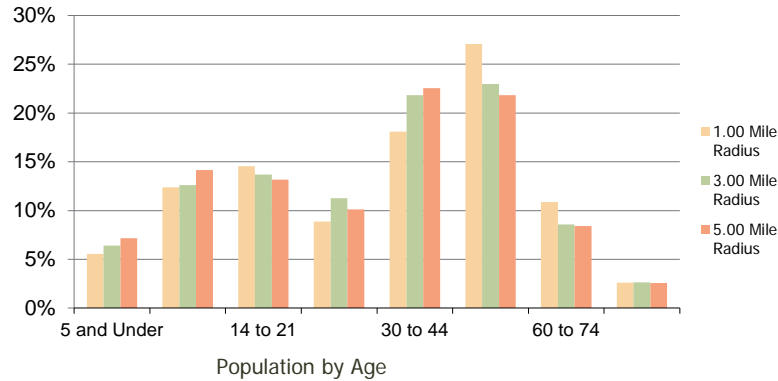


Ethnicity (3-Mile)

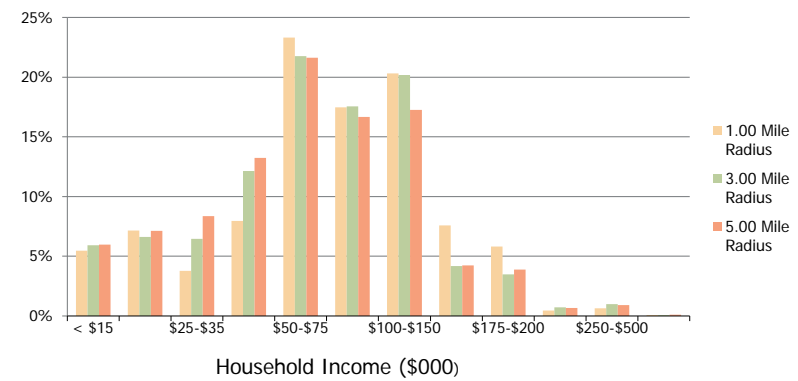
This report was produced using data from private and government sources deemed to be reliable and is herein provided without representation or warranty.

Russell Ridge Lawrenceville, GA	1.00 Mile Radius	3.00 Mile Radius	5.00 Mile Radius
------------------------------------	---------------------	---------------------	---------------------

Population by Age Range



Household Income by Income Range



Population	Current Estimated Population	6,288	59,631	159,782
	2010 Census Population	6,170	57,258	154,475
	2000 Census Population	6,206	44,836	105,803
	Historical Annual Growth 2000 to 2010	-0.06%	2.48%	3.86%
	Estimated Annual Growth 2010 to 2011	1.09%	2.35%	1.95%
Households	Projected Annual Growth 2011 to 2016	3.15%	3.88%	3.61%
	Current Estimated Households	2,014	19,147	52,007
	2010 Census Households	1,974	18,277	50,178
	2000 Census Households	1,919	13,959	34,371
	Historical Annual Growth 2000 to 2010	0.3%	2.7%	3.9%
Ethnicity	Estimated Annual Growth 2010 to 2011	1.1%	2.7%	2.1%
	Projected Annual Growth 2011 to 2016	3.2%	4.2%	3.7%
	Population per Household	3.1	3.0	3.0
	White	67.9%	61.6%	57.7%
	Black or African American	15.4%	21.3%	22.8%
	Asian & Pacific Islander	10.1%	8.3%	9.7%
	Other Races	6.7%	8.7%	9.8%
Hispanic or Latino Population	10.5%	14.8%	16.6%	
Non Hispanic or Latino Population	89.5%	85.2%	83.4%	

This report was produced using data from private and government sources deemed to be reliable and is herein provided without representation or warranty.