

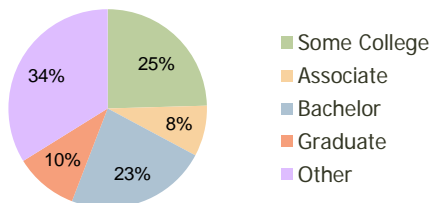
Courtyard Shopping Center Jacksonville, FL	1.00 Mile Radius	3.00 Mile Radius	5.00 Mile Radius
---	---------------------	---------------------	---------------------

Current Year Demographics

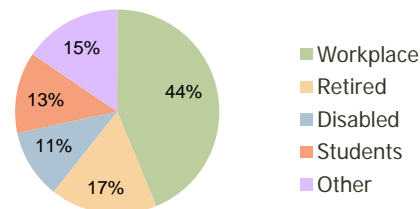
Current Population	6,984	53,487	119,557
Adjusted Total Pop (Carrier Route)	7,878	59,790	123,084
Total Daytime Pop	8,241	39,972	146,471
Workplace Pop	4,747	17,495	86,761
Average Household Income	\$99,516	\$82,303	\$79,576
Median Household Income	\$66,659	\$58,451	\$58,678
Total Housing Units	2,959	22,412	49,572
Median Home Value	\$149,896	\$146,820	\$149,819
Bachelors Degree	25.4%	23.0%	23.7%
Graduate Degree	12.0%	10.3%	11.2%
Total Consumer Spending/Capita	\$295	\$288	\$275

2016 Demographic Projections

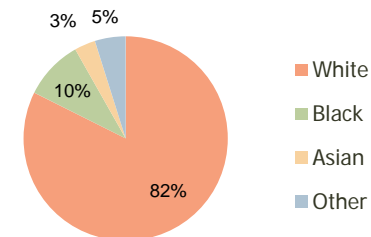
Projected Population	7,249	56,027	133,072
Projected 5 Year Pop Growth	0.7%	0.9%	2.2%
Projected Households	3,073	23,469	55,311
Projected 5 Year Household Growth	0.8%	0.9%	2.2%



Education (3-Mile)



Daytime Population (3-Mile)



Ethnicity (3-Mile)

This report was produced using data from private and government sources deemed to be reliable and is herein provided without representation or warranty.

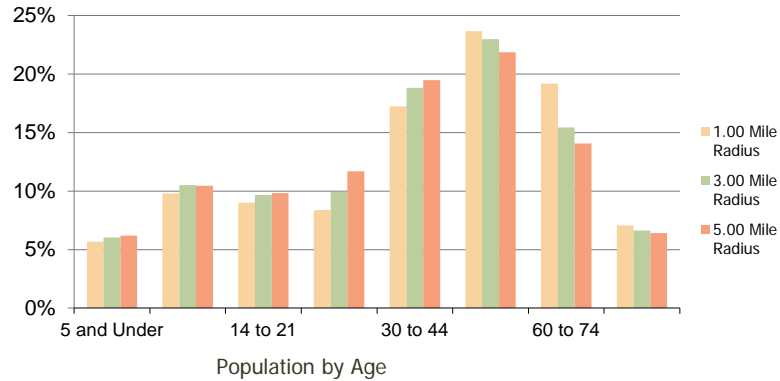
Courtyard Shopping Center
Jacksonville, FL

1.00 Mile
Radius

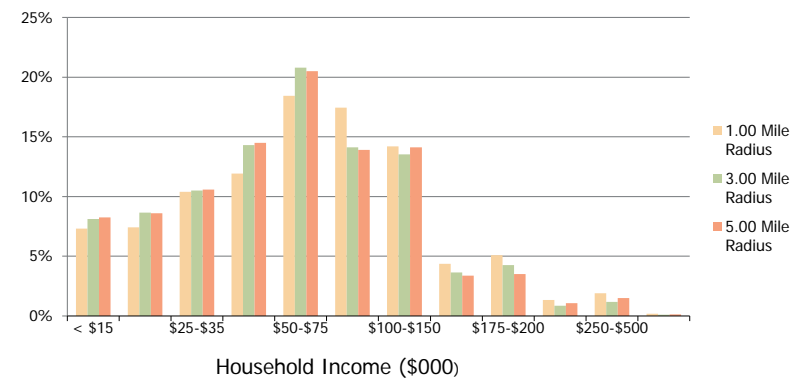
3.00 Mile
Radius

5.00 Mile
Radius

Population by Age Range



Household Income by Income Range



	1.00 Mile Radius	3.00 Mile Radius	5.00 Mile Radius	
Population	Current Estimated Population	6,984	53,487	119,557
	2010 Census Population	6,969	53,156	116,557
	2000 Census Population	7,599	53,816	113,349
	Historical Annual Growth 2000 to 2010	-0.86%	-0.12%	0.28%
	Estimated Annual Growth 2010 to 2011	0.12%	0.36%	1.46%
Households	Projected Annual Growth 2011 to 2016	0.75%	0.93%	2.17%
	Current Estimated Households	2,959	22,412	49,572
	2010 Census Households	2,953	22,273	48,333
	2000 Census Households	3,052	21,779	45,931
	Historical Annual Growth 2000 to 2010	-0.3%	0.2%	0.5%
Ethnicity	Estimated Annual Growth 2010 to 2011	0.1%	0.4%	1.5%
	Projected Annual Growth 2011 to 2016	0.8%	0.9%	2.2%
	Population per Household	2.4	2.4	2.4
	White	88.5%	82.4%	78.7%
	Black or African American	4.9%	9.4%	11.4%
	Asian & Pacific Islander	2.5%	3.3%	4.6%
	Other Races	4.1%	4.9%	5.3%
Hispanic or Latino Population	7.8%	8.6%	8.8%	
Non Hispanic or Latino Population	92.2%	91.4%	91.2%	

This report was produced using data from private and government sources deemed to be reliable and is herein provided without representation or warranty.