

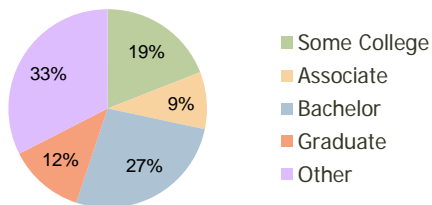
Chasewood Plaza Jupiter, FL	1.00 Mile Radius	3.00 Mile Radius	5.00 Mile Radius
--------------------------------	---------------------	---------------------	---------------------

Current Year Demographics

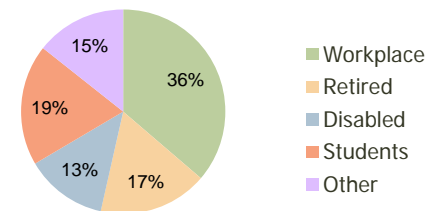
Current Population	9,985	56,387	91,700
Adjusted Total Pop (Carrier Route)	9,121	57,530	96,970
Total Daytime Pop	10,961	43,837	75,814
Workplace Pop	4,862	15,901	27,304
Average Household Income	\$70,921	\$98,948	\$107,868
Median Household Income	\$54,940	\$70,301	\$73,589
Total Housing Units	4,090	22,241	39,279
Median Home Value	\$162,444	\$220,869	\$236,612
Bachelors Degree	18.5%	26.8%	28.1%
Graduate Degree	8.2%	12.3%	14.6%
Total Consumer Spending/Capita	\$304	\$311	\$313

2016 Demographic Projections

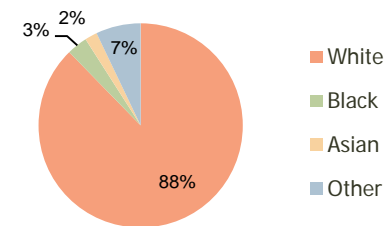
Projected Population	11,023	64,681	103,743
Projected 5 Year Pop Growth	2.0%	2.8%	2.5%
Projected Households	4,521	25,262	44,046
Projected 5 Year Household Growth	2.0%	2.6%	2.3%



Education (3-Mile)



Daytime Population (3-Mile)



Ethnicity (3-Mile)

This report was produced using data from private and government sources deemed to be reliable and is herein provided without representation or warranty.

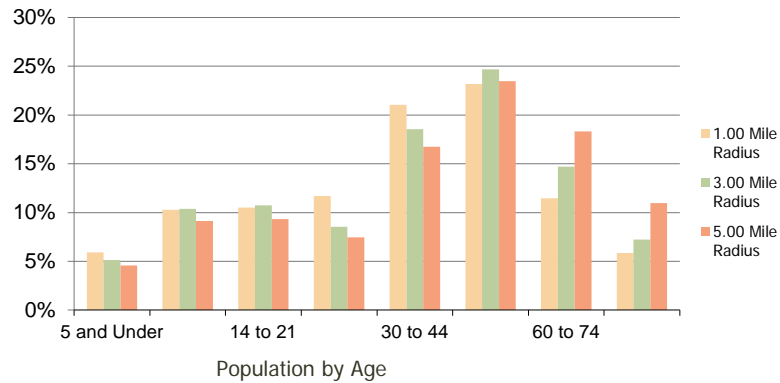
Chasewood Plaza
Jupiter, FL

1.00 Mile
Radius

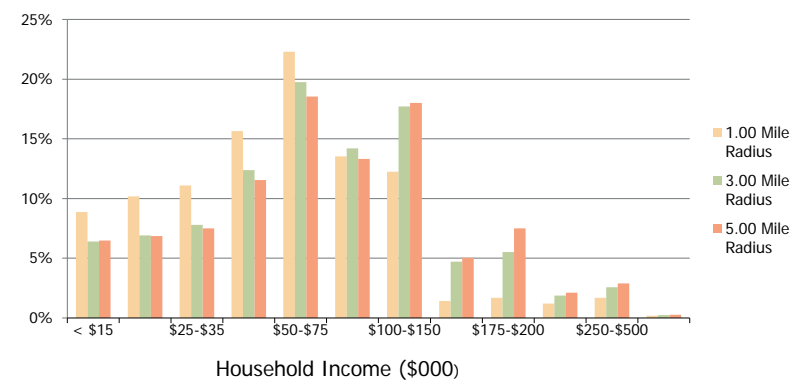
3.00 Mile
Radius

5.00 Mile
Radius

Population by Age Range



Household Income by Income Range



	1.00 Mile Radius	3.00 Mile Radius	5.00 Mile Radius	
Population	Current Estimated Population	9,985	56,387	91,700
	2010 Census Population	9,950	55,104	89,889
	2000 Census Population	8,787	42,765	69,036
	Historical Annual Growth 2000 to 2010	1.25%	2.57%	2.67%
	Estimated Annual Growth 2010 to 2011	0.20%	1.32%	1.15%
Projected Annual Growth 2011 to 2016	2.00%	2.78%	2.50%	
Households	Current Estimated Households	4,090	22,241	39,279
	2010 Census Households	4,075	21,842	38,645
	2000 Census Households	3,586	16,887	29,227
	Historical Annual Growth 2000 to 2010	1.3%	2.6%	2.8%
	Estimated Annual Growth 2010 to 2011	0.2%	1.0%	0.9%
	Projected Annual Growth 2011 to 2016	2.0%	2.6%	2.3%
Population per Household	2.4	2.5	2.3	
Ethnicity	White	80.3%	87.7%	90.6%
	Black or African American	9.8%	3.3%	2.4%
	Asian & Pacific Islander	1.6%	2.0%	1.8%
	Other Races	8.4%	7.1%	5.2%
	Hispanic or Latino Population	19.9%	15.3%	11.4%
Non Hispanic or Latino Population	80.1%	84.7%	88.6%	

This report was produced using data from private and government sources deemed to be reliable and is herein provided without representation or warranty.