

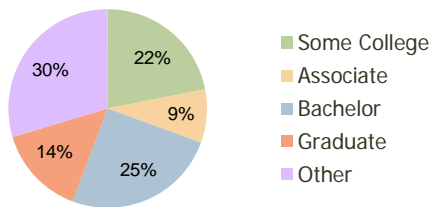
Martin Downs Village Center Palm City, FL	1.00 Mile Radius	3.00 Mile Radius	5.00 Mile Radius
--	---------------------	---------------------	---------------------

Current Year Demographics

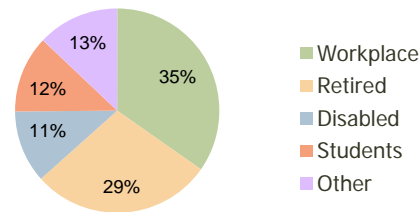
Current Population	7,113	28,343	67,937
Adjusted Total Pop (Carrier Route)	7,109	31,668	71,512
Total Daytime Pop	6,488	25,037	72,879
Workplace Pop	1,946	8,694	31,663
Average Household Income	\$80,029	\$91,036	\$81,643
Median Household Income	\$63,414	\$67,727	\$58,132
Total Housing Units	3,289	12,420	29,080
Median Home Value	\$155,200	\$194,262	\$160,342
Bachelors Degree	25.8%	25.2%	20.1%
Graduate Degree	13.2%	14.6%	11.5%
Total Consumer Spending/Capita	\$313	\$289	\$284

2016 Demographic Projections

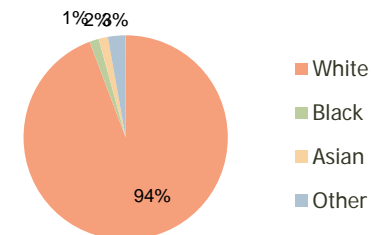
Projected Population	7,961	31,063	73,421
Projected 5 Year Pop Growth	2.3%	1.8%	1.6%
Projected Households	3,668	13,535	31,268
Projected 5 Year Household Growth	2.2%	1.7%	1.5%



Education (3-Mile)



Daytime Population (3-Mile)



Ethnicity (3-Mile)

This report was produced using data from private and government sources deemed to be reliable and is herein provided without representation or warranty.

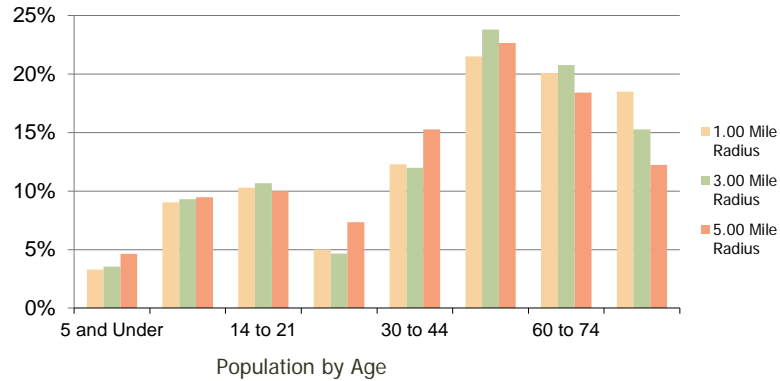
Martin Downs Village Center
Palm City, FL

1.00 Mile
Radius

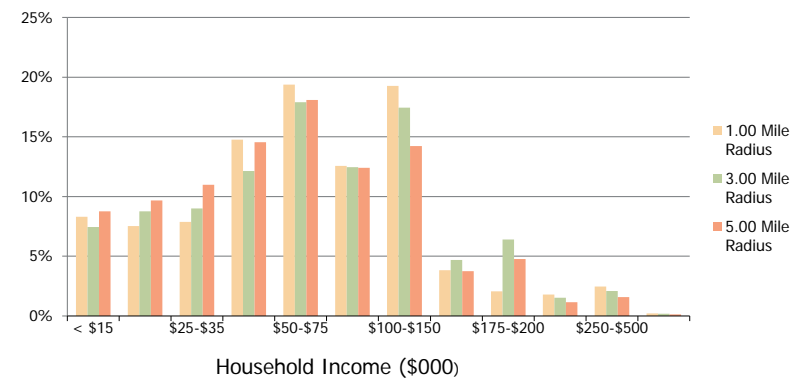
3.00 Mile
Radius

5.00 Mile
Radius

Population by Age Range



Household Income by Income Range



	1.00 Mile Radius	3.00 Mile Radius	5.00 Mile Radius
Population			
Current Estimated Population	7,113	28,343	67,937
2010 Census Population	6,924	27,947	67,409
2000 Census Population	6,237	24,740	54,469
Historical Annual Growth 2000 to 2010	1.05%	1.23%	2.15%
Estimated Annual Growth 2010 to 2011	1.56%	0.81%	0.45%
Projected Annual Growth 2011 to 2016	2.28%	1.85%	1.56%
Households			
Current Estimated Households	3,289	12,420	29,080
2010 Census Households	3,212	12,289	28,907
2000 Census Households	2,906	10,952	23,804
Historical Annual Growth 2000 to 2010	1.0%	1.2%	2.0%
Estimated Annual Growth 2010 to 2011	1.4%	0.6%	0.3%
Projected Annual Growth 2011 to 2016	2.2%	1.7%	1.5%
Population per Household	2.1	2.3	2.3
Ethnicity			
White	95.0%	94.3%	87.3%
Black or African American	1.2%	1.5%	5.8%
Asian & Pacific Islander	1.6%	1.5%	1.4%
Other Races	2.2%	2.8%	5.5%
Hispanic or Latino Population	6.0%	6.5%	11.1%
Non Hispanic or Latino Population	94.0%	93.5%	88.9%

This report was produced using data from private and government sources deemed to be reliable and is herein provided without representation or warranty.