

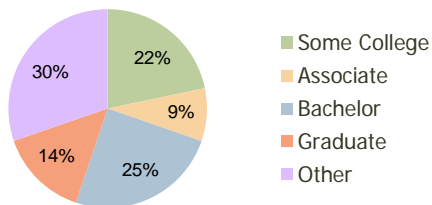
Martin Downs Village Shoppes Palm City, FL	1.00 Mile Radius	3.00 Mile Radius	5.00 Mile Radius
---	---------------------	---------------------	---------------------

Current Year Demographics

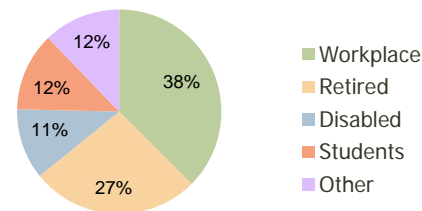
Current Population	7,485	28,934	70,256
Adjusted Total Pop (Carrier Route)	7,664	33,151	74,287
Total Daytime Pop	6,228	27,362	74,573
Workplace Pop	1,661	10,255	32,654
Average Household Income	\$80,403	\$89,701	\$81,010
Median Household Income	\$63,988	\$66,440	\$57,611
Total Housing Units	3,494	12,737	30,073
Median Home Value	\$156,836	\$191,755	\$159,147
Bachelors Degree	25.6%	24.9%	19.9%
Graduate Degree	13.8%	14.5%	11.5%
Total Consumer Spending/Capita	\$313	\$286	\$283

2016 Demographic Projections

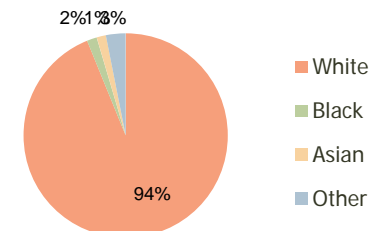
Projected Population	8,367	31,649	75,767
Projected 5 Year Pop Growth	2.3%	1.8%	1.5%
Projected Households	3,891	13,852	32,268
Projected 5 Year Household Growth	2.2%	1.7%	1.4%



Education (3-Mile)



Daytime Population (3-Mile)



Ethnicity (3-Mile)

This report was produced using data from private and government sources deemed to be reliable and is herein provided without representation or warranty.

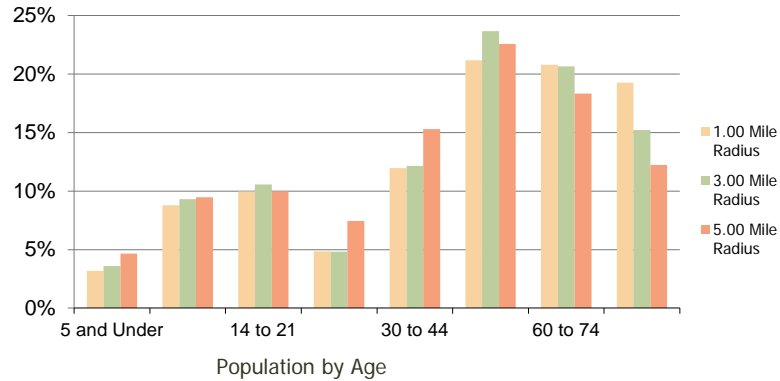
Martin Downs Village Shoppes
Palm City, FL

1.00 Mile
Radius

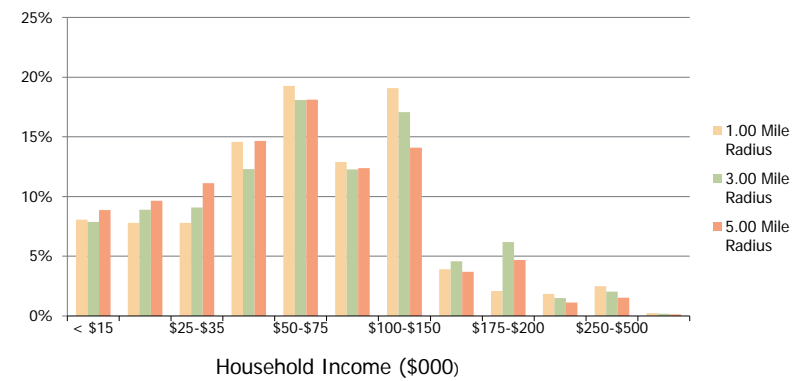
3.00 Mile
Radius

5.00 Mile
Radius

Population by Age Range



Household Income by Income Range



Population	Current Estimated Population	7,485	28,934	70,256
	2010 Census Population	7,291	28,548	69,777
	2000 Census Population	6,664	25,333	56,489
	Historical Annual Growth 2000 to 2010	0.90%	1.20%	2.13%
	Estimated Annual Growth 2010 to 2011	1.51%	0.77%	0.39%
Households	Projected Annual Growth 2011 to 2016	2.25%	1.81%	1.52%
	Current Estimated Households	3,494	12,737	30,073
	2010 Census Households	3,416	12,612	29,922
	2000 Census Households	3,120	11,277	24,713
	Historical Annual Growth 2000 to 2010	0.9%	1.1%	1.9%
Ethnicity	Estimated Annual Growth 2010 to 2011	1.3%	0.6%	0.3%
	Projected Annual Growth 2011 to 2016	2.2%	1.7%	1.4%
	Population per Household	2.1	2.3	2.3
	White	95.3%	93.8%	87.0%
	Black or African American	1.2%	1.6%	5.8%
	Asian & Pacific Islander	1.5%	1.5%	1.4%
	Other Races	2.1%	3.1%	5.8%
Hispanic or Latino Population	5.7%	7.0%	11.4%	
Non Hispanic or Latino Population	94.3%	93.0%	88.6%	

This report was produced using data from private and government sources deemed to be reliable and is herein provided without representation or warranty.