

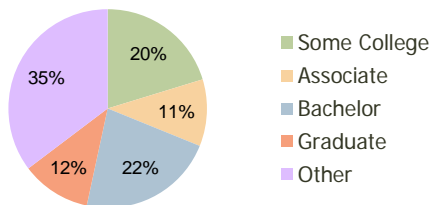
Village Center Tampa, FL	1.00 Mile Radius	3.00 Mile Radius	5.00 Mile Radius
-----------------------------	---------------------	---------------------	---------------------

Current Year Demographics

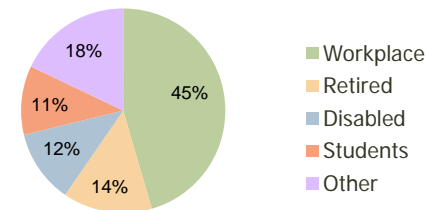
Current Population	8,202	94,839	250,492
Adjusted Total Pop (Carrier Route)	10,301	104,571	266,511
Total Daytime Pop	8,678	78,092	254,691
Workplace Pop	5,595	35,526	112,968
Average Household Income	\$85,679	\$70,983	\$61,082
Median Household Income	\$66,643	\$53,874	\$44,407
Total Housing Units	3,811	39,649	99,230
Median Home Value	\$184,438	\$142,621	\$128,390
Bachelors Degree	29.2%	22.3%	17.9%
Graduate Degree	19.5%	11.3%	8.6%
Total Consumer Spending/Capita	\$287	\$271	\$263

2016 Demographic Projections

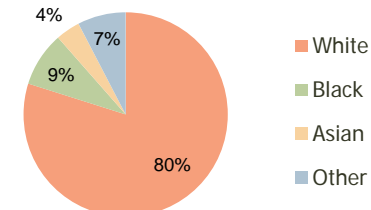
Projected Population	9,152	99,391	264,432
Projected 5 Year Pop Growth	2.2%	0.9%	1.1%
Projected Households	4,280	41,492	104,647
Projected 5 Year Household Growth	2.4%	0.9%	1.1%



Education (3-Mile)



Daytime Population (3-Mile)

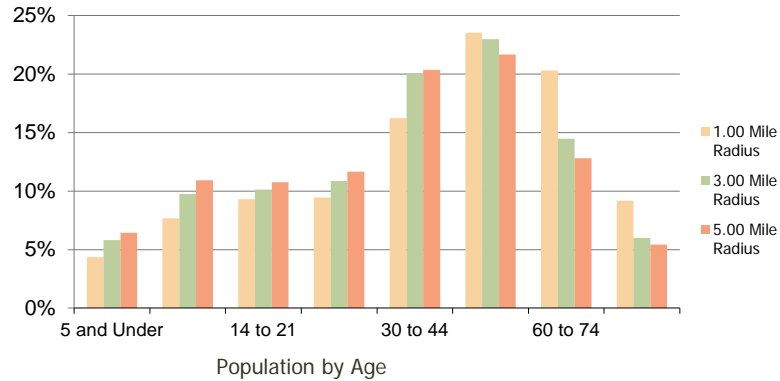


Ethnicity (3-Mile)

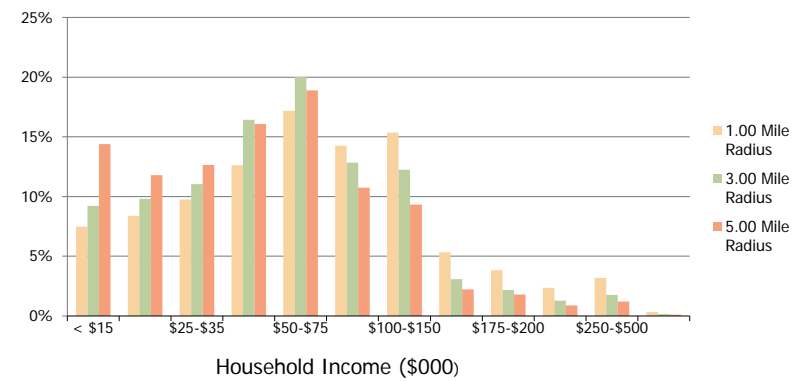
This report was produced using data from private and government sources deemed to be reliable and is herein provided without representation or warranty.

Village Center Tampa, FL	1.00 Mile Radius	3.00 Mile Radius	5.00 Mile Radius
------------------------------------	------------------	------------------	------------------

Population by Age Range



Household Income by Income Range



	1.00 Mile Radius	3.00 Mile Radius	5.00 Mile Radius
Population			
Current Estimated Population	8,202	94,839	250,492
2010 Census Population	8,061	95,377	250,015
2000 Census Population	8,631	92,810	240,142
Historical Annual Growth 2000 to 2010	-0.68%	0.27%	0.40%
Estimated Annual Growth 2010 to 2011	1.00%	-0.32%	0.11%
Projected Annual Growth 2011 to 2016	2.22%	0.94%	1.09%
Households			
Current Estimated Households	3,811	39,649	99,230
2010 Census Households	3,730	39,944	99,145
2000 Census Households	3,756	38,243	96,007
Historical Annual Growth 2000 to 2010	-0.1%	0.4%	0.3%
Estimated Annual Growth 2010 to 2011	1.2%	-0.4%	0.0%
Projected Annual Growth 2011 to 2016	2.4%	0.9%	1.1%
Population per Household	2.1	2.4	2.5
Ethnicity			
White	87.4%	79.9%	71.8%
Black or African American	5.6%	8.6%	15.4%
Asian & Pacific Islander	2.7%	3.9%	3.3%
Other Races	4.3%	7.6%	9.5%
Hispanic or Latino Population	18.3%	28.5%	35.2%
Non Hispanic or Latino Population	81.7%	71.5%	64.8%

This report was produced using data from private and government sources deemed to be reliable and is herein provided without representation or warranty.