

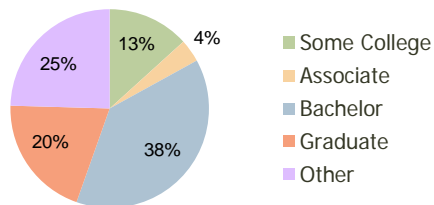
Cambridge Square Atlanta, GA	1.00 Mile Radius	3.00 Mile Radius	5.00 Mile Radius
---------------------------------	---------------------	---------------------	---------------------

Current Year Demographics

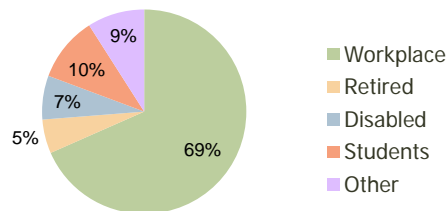
Current Population	8,375	96,398	265,956
Adjusted Total Pop (Carrier Route)	8,108	105,728	291,987
Total Daytime Pop	8,565	155,357	397,508
Workplace Pop	3,460	106,236	258,416
Average Household Income	\$125,227	\$103,585	\$104,117
Median Household Income	\$91,533	\$72,033	\$70,740
Total Housing Units	3,770	42,843	116,714
Median Home Value	\$298,042	\$269,771	\$263,070
Bachelors Degree	44.3%	38.4%	35.9%
Graduate Degree	25.8%	20.0%	21.4%
Total Consumer Spending/Capita	\$292	\$287	\$293

2016 Demographic Projections

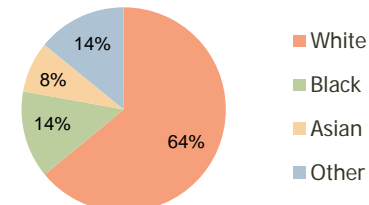
Projected Population	9,204	107,309	296,316
Projected 5 Year Pop Growth	1.9%	2.2%	2.2%
Projected Households	4,081	48,053	131,213
Projected 5 Year Household Growth	1.6%	2.3%	2.4%



Education (3-Mile)



Daytime Population (3-Mile)

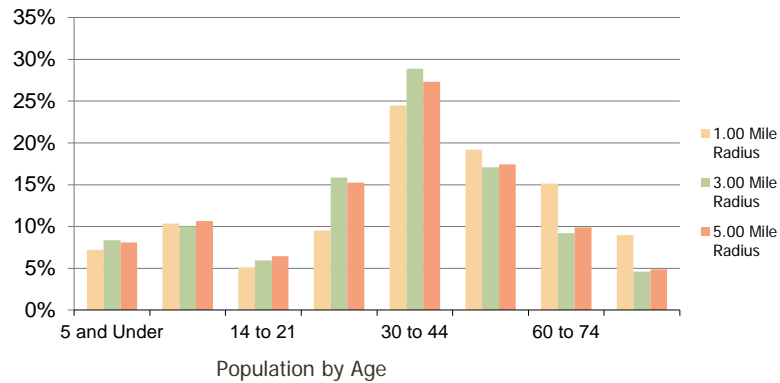


Ethnicity (3-Mile)

This report was produced using data from private and government sources deemed to be reliable and is herein provided without representation or warranty.

Cambridge Square Atlanta, GA	1.00 Mile Radius	3.00 Mile Radius	5.00 Mile Radius
--	-------------------------	-------------------------	-------------------------

Population by Age Range



Household Income by Income Range



	1.00 Mile Radius	3.00 Mile Radius	5.00 Mile Radius
Population			
Current Estimated Population	8,375	96,398	265,956
2010 Census Population	8,106	94,270	259,554
2000 Census Population	7,681	82,451	235,487
Historical Annual Growth 2000 to 2010	0.54%	1.35%	0.98%
Estimated Annual Growth 2010 to 2011	1.89%	1.28%	1.40%
Projected Annual Growth 2011 to 2016	1.90%	2.17%	2.19%
Households			
Current Estimated Households	3,770	42,843	116,714
2010 Census Households	3,684	41,651	113,025
2000 Census Households	3,373	34,677	100,171
Historical Annual Growth 2000 to 2010	0.9%	1.8%	1.2%
Estimated Annual Growth 2010 to 2011	1.3%	1.6%	1.9%
Projected Annual Growth 2011 to 2016	1.6%	2.3%	2.4%
Population per Household	2.2	2.2	2.3
Ethnicity			
White	76.8%	64.0%	64.1%
Black or African American	12.0%	13.8%	13.6%
Asian & Pacific Islander	7.9%	8.1%	8.0%
Other Races	3.3%	14.1%	14.3%
Hispanic or Latino Population	5.2%	21.0%	22.1%
Non Hispanic or Latino Population	94.8%	79.0%	77.9%

This report was produced using data from private and government sources deemed to be reliable and is herein provided without representation or warranty.