

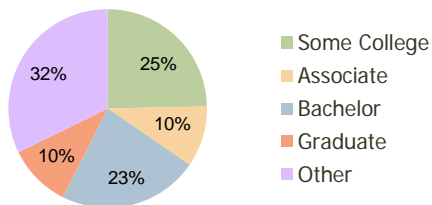
Old St. Augustine Plaza Jacksonville, FL	1.00 Mile Radius	3.00 Mile Radius	5.00 Mile Radius
---	---------------------	---------------------	---------------------

Current Year Demographics

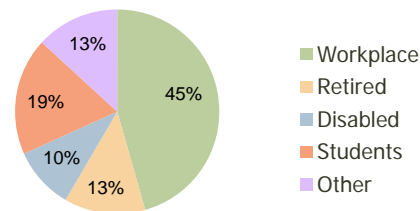
Current Population	12,038	66,498	131,850
Adjusted Total Pop (Carrier Route)	12,998	69,400	140,269
Total Daytime Pop	8,689	58,923	134,739
Workplace Pop	2,676	26,859	75,743
Average Household Income	\$60,714	\$81,443	\$82,967
Median Household Income	\$49,900	\$62,220	\$63,031
Total Housing Units	5,275	27,221	54,310
Median Home Value	\$128,317	\$147,787	\$158,057
Bachelors Degree	19.8%	22.8%	26.5%
Graduate Degree	7.6%	10.3%	11.7%
Total Consumer Spending/Capita	\$281	\$281	\$280

2016 Demographic Projections

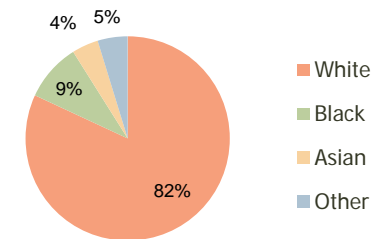
Projected Population	12,588	70,628	148,239
Projected 5 Year Pop Growth	0.9%	1.2%	2.4%
Projected Households	5,518	28,885	60,958
Projected 5 Year Household Growth	0.9%	1.2%	2.3%



Education (3-Mile)



Daytime Population (3-Mile)



Ethnicity (3-Mile)

This report was produced using data from private and government sources deemed to be reliable and is herein provided without representation or warranty.

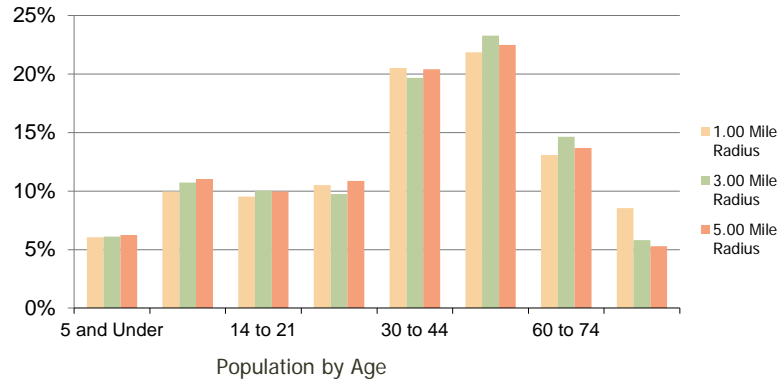
Old St. Augustine Plaza
Jacksonville, FL

1.00 Mile
Radius

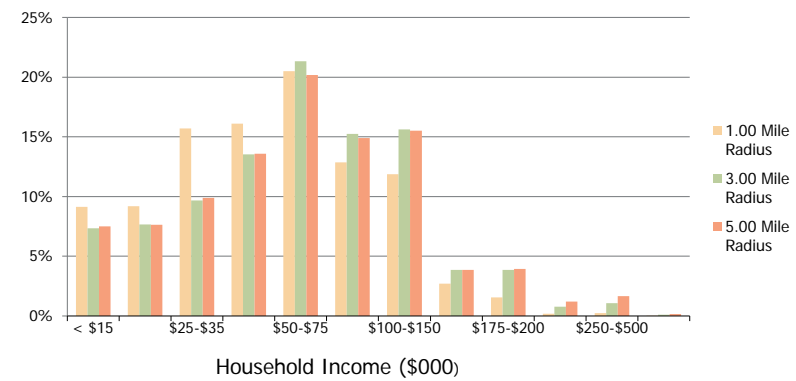
3.00 Mile
Radius

5.00 Mile
Radius

Population by Age Range



Household Income by Income Range



	1.00 Mile Radius	3.00 Mile Radius	5.00 Mile Radius	
Population	Current Estimated Population	12,038	66,498	131,850
	2010 Census Population	11,971	66,005	128,898
	2000 Census Population	12,390	61,877	112,231
	Historical Annual Growth 2000 to 2010	-0.34%	0.65%	1.39%
	Estimated Annual Growth 2010 to 2011	0.32%	0.43%	1.30%
Projected Annual Growth 2011 to 2016	0.90%	1.21%	2.37%	
Households	Current Estimated Households	5,275	27,221	54,310
	2010 Census Households	5,242	27,021	53,106
	2000 Census Households	5,279	24,267	45,612
	Historical Annual Growth 2000 to 2010	-0.1%	1.1%	1.5%
	Estimated Annual Growth 2010 to 2011	0.4%	0.4%	1.3%
Projected Annual Growth 2011 to 2016	0.9%	1.2%	2.3%	
Population per Household	2.2	2.4	2.4	
Ethnicity	White	83.1%	81.9%	79.9%
	Black or African American	8.6%	9.1%	9.9%
	Asian & Pacific Islander	3.0%	4.2%	5.4%
	Other Races	5.3%	4.7%	4.8%
	Hispanic or Latino Population	9.3%	8.3%	8.3%
Non Hispanic or Latino Population	90.7%	91.7%	91.7%	

This report was produced using data from private and government sources deemed to be reliable and is herein provided without representation or warranty.