

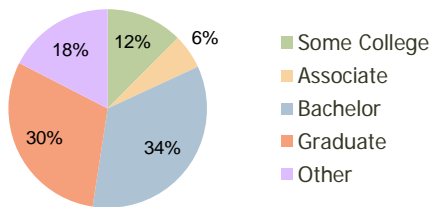
Woodcroft Shopping Center Durham, NC	1.00 Mile Radius	3.00 Mile Radius	5.00 Mile Radius
---	---------------------	---------------------	---------------------

### Current Year Demographics

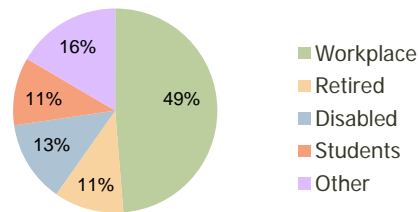
Current Population	5,761	52,677	122,257
Adjusted Total Pop (Carrier Route)	6,408	55,890	124,203
Total Daytime Pop	6,025	38,845	130,824
Workplace Pop	2,860	18,931	63,223
Average Household Income	\$87,886	\$82,285	\$83,075
Median Household Income	\$64,123	\$63,408	\$59,900
Total Housing Units	2,693	23,978	52,417
Median Home Value	\$214,792	\$214,597	\$211,410
Bachelors Degree	38.3%	34.3%	30.6%
Graduate Degree	34.4%	30.1%	30.3%
Total Consumer Spending/Capita	\$306	\$294	\$282

### 2016 Demographic Projections

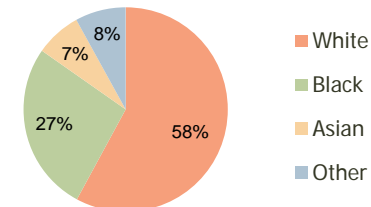
Projected Population	6,174	56,825	133,066
Projected 5 Year Pop Growth	1.4%	1.5%	1.7%
Projected Households	2,881	25,831	57,188
Projected 5 Year Household Growth	1.4%	1.5%	1.8%



Education (3-Mile)



Daytime Population (3-Mile)



Ethnicity (3-Mile)

This report was produced using data from private and government sources deemed to be reliable and is herein provided without representation or warranty.

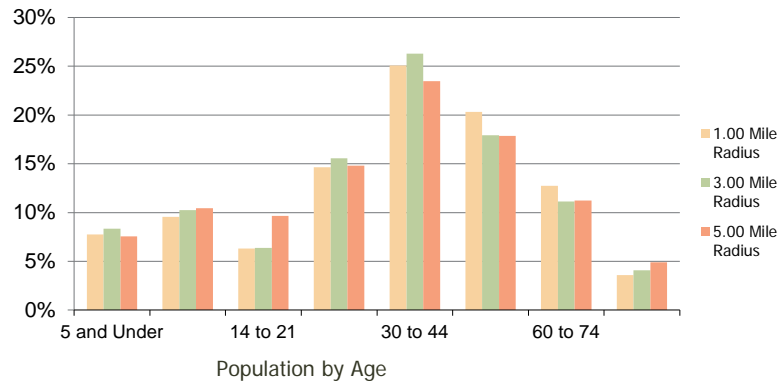
**Woodcroft Shopping Center**  
Durham, NC

1.00 Mile  
Radius

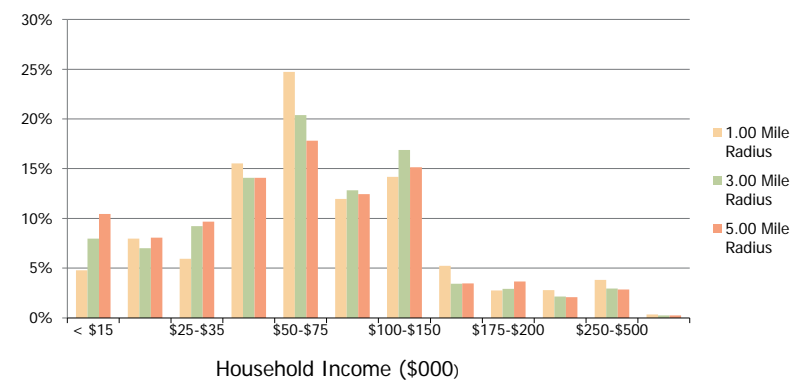
3.00 Mile  
Radius

5.00 Mile  
Radius

**Population by Age Range**



**Household Income by Income Range**



	1.00 Mile Radius	3.00 Mile Radius	5.00 Mile Radius
<b>Population</b>			
Current Estimated Population	5,761	52,677	122,257
2010 Census Population	5,658	51,617	120,408
2000 Census Population	5,134	39,601	97,171
Historical Annual Growth 2000 to 2010	0.98%	2.69%	2.17%
Estimated Annual Growth 2010 to 2011	1.03%	1.17%	0.87%
Projected Annual Growth 2011 to 2016	1.40%	1.53%	1.71%
<b>Households</b>			
Current Estimated Households	2,693	23,978	52,417
2010 Census Households	2,647	23,504	51,598
2000 Census Households	2,269	17,650	40,834
Historical Annual Growth 2000 to 2010	1.6%	2.9%	2.4%
Estimated Annual Growth 2010 to 2011	1.0%	1.1%	0.9%
Projected Annual Growth 2011 to 2016	1.4%	1.5%	1.8%
Population per Household	2.1	2.2	2.2
<b>Ethnicity</b>			
White	67.6%	57.9%	53.9%
Black or African American	21.7%	26.8%	30.6%
Asian & Pacific Islander	5.2%	7.3%	7.0%
Other Races	5.4%	8.0%	8.4%
Hispanic or Latino Population	5.3%	9.8%	10.3%
Non Hispanic or Latino Population	94.7%	90.2%	89.7%

This report was produced using data from private and government sources deemed to be reliable and is herein provided without representation or warranty.