

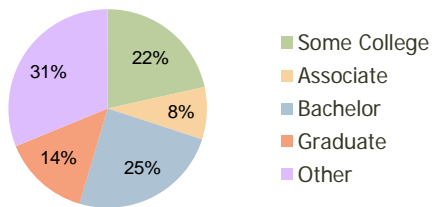
Martin Downs Town Center Palm City, FL	1.00 Mile Radius	3.00 Mile Radius	5.00 Mile Radius
---	---------------------	---------------------	---------------------

Current Year Demographics

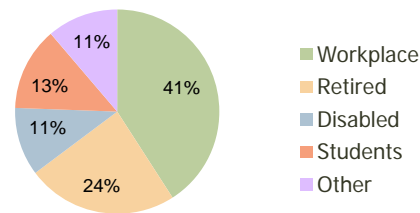
Current Population	7,347	30,811	72,432
Adjusted Total Pop (Carrier Route)	7,747	36,021	76,464
Total Daytime Pop	6,656	31,787	77,481
Workplace Pop	1,881	12,996	33,956
Average Household Income	\$79,211	\$87,963	\$80,897
Median Household Income	\$63,855	\$64,936	\$57,330
Total Housing Units	3,420	13,579	31,096
Median Home Value	\$152,325	\$190,091	\$159,250
Bachelors Degree	24.8%	24.6%	19.7%
Graduate Degree	12.9%	14.2%	11.5%
Total Consumer Spending/Capita	\$0	\$282	\$282

2016 Demographic Projections

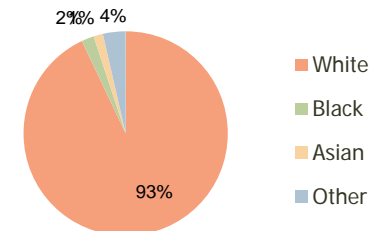
Projected Population	8,229	33,569	77,738
Projected 5 Year Pop Growth	2.3%	1.7%	1.4%
Projected Households	3,815	14,716	33,217
Projected 5 Year Household Growth	2.2%	1.6%	1.3%



Education (3-Mile)



Daytime Population (3-Mile)



Ethnicity (3-Mile)

This report was produced using data from private and government sources deemed to be reliable and is herein provided without representation or warranty.

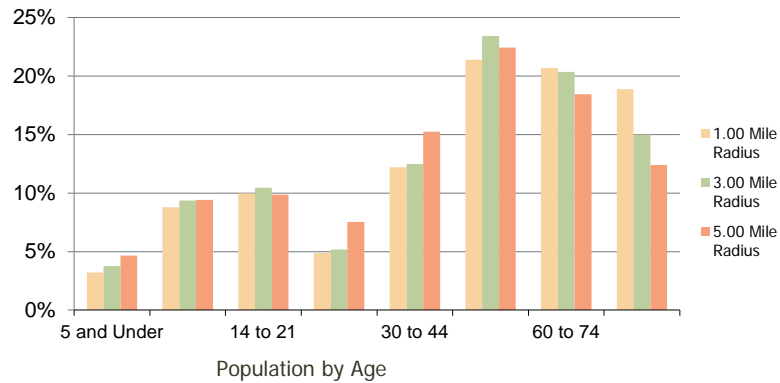
Martin Downs Town Center
Palm City, FL

1.00 Mile
Radius

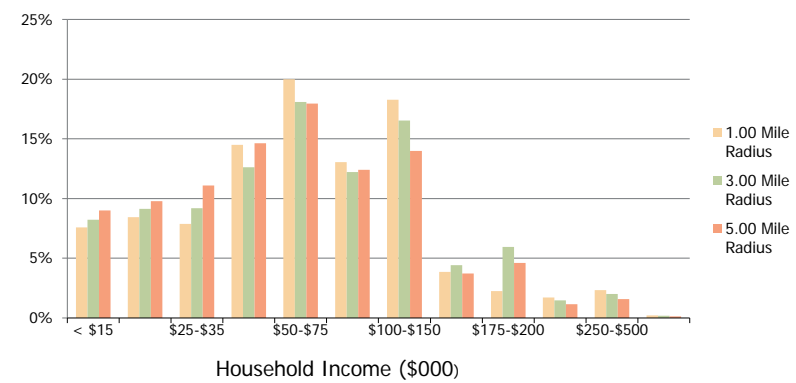
3.00 Mile
Radius

5.00 Mile
Radius

Population by Age Range



Household Income by Income Range



	1.00 Mile Radius	3.00 Mile Radius	5.00 Mile Radius
Population			
Current Estimated Population	7,347	30,811	72,432
2010 Census Population	7,149	30,446	72,000
2000 Census Population	6,507	26,908	58,886
Historical Annual Growth 2000 to 2010	0.95%	1.24%	2.03%
Estimated Annual Growth 2010 to 2011	1.57%	0.68%	0.34%
Projected Annual Growth 2011 to 2016	2.30%	1.73%	1.42%
Households			
Current Estimated Households	3,420	13,579	31,096
2010 Census Households	3,340	13,463	30,964
2000 Census Households	3,029	11,983	25,799
Historical Annual Growth 2000 to 2010	1.0%	1.2%	1.8%
Estimated Annual Growth 2010 to 2011	1.4%	0.5%	0.2%
Projected Annual Growth 2011 to 2016	2.2%	1.6%	1.3%
Population per Household	2.1	2.2	2.3
Ethnicity			
White	95.3%	93.0%	86.9%
Black or African American	1.1%	2.0%	5.5%
Asian & Pacific Islander	1.5%	1.5%	1.4%
Other Races	2.1%	3.6%	6.2%
Hispanic or Latino Population	5.8%	7.9%	11.9%
Non Hispanic or Latino Population	94.2%	92.1%	88.1%

This report was produced using data from private and government sources deemed to be reliable and is herein provided without representation or warranty.