

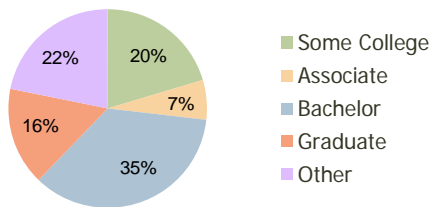
Carmel Commons Charlotte, NC	1.00 Mile Radius	3.00 Mile Radius	5.00 Mile Radius
--	---------------------	---------------------	---------------------

Current Year Demographics

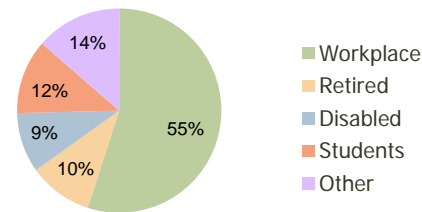
Current Population	13,019	71,677	180,558
Adjusted Total Pop (Carrier Route)	13,549	76,187	193,501
Total Daytime Pop	15,387	72,207	191,780
Workplace Pop	10,370	39,693	105,896
Average Household Income	\$72,811	\$102,452	\$101,875
Median Household Income	\$55,983	\$62,912	\$69,301
Total Housing Units	6,091	31,398	74,564
Median Home Value	\$160,639	\$221,737	\$223,202
Bachelors Degree	33.9%	35.4%	35.3%
Graduate Degree	12.8%	15.9%	16.8%
Total Consumer Spending/Capita	\$284	\$299	\$296

2016 Demographic Projections

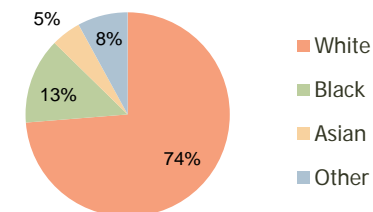
Projected Population	14,813	81,724	209,667
Projected 5 Year Pop Growth	2.6%	2.7%	3.0%
Projected Households	6,976	35,871	86,443
Projected 5 Year Household Growth	2.7%	2.7%	3.0%



Education (3-Mile)



Daytime Population (3-Mile)



Ethnicity (3-Mile)

This report was produced using data from private and government sources deemed to be reliable and is herein provided without representation or warranty.

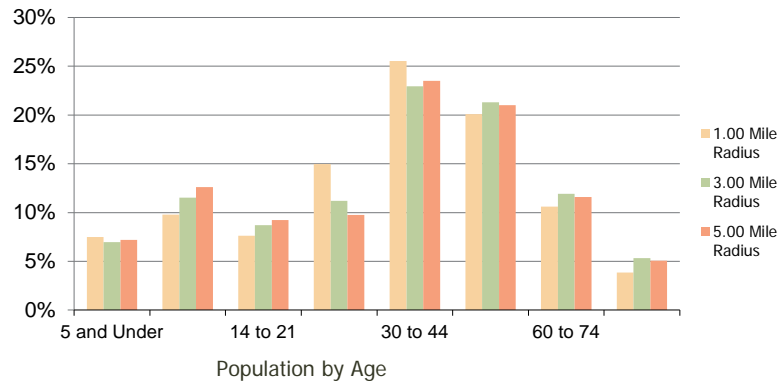
Carmel Commons
Charlotte, NC

1.00 Mile
Radius

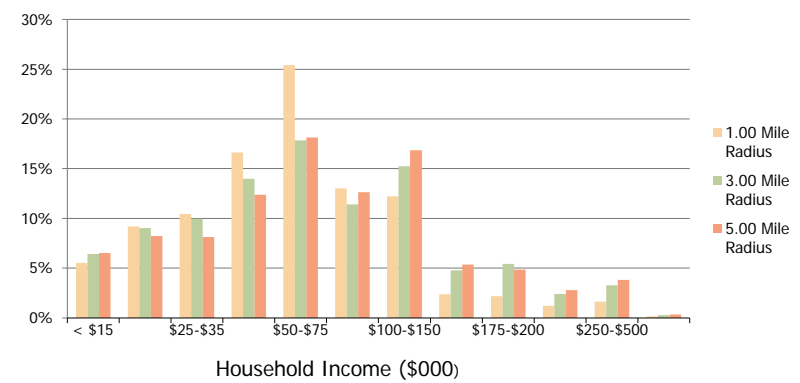
3.00 Mile
Radius

5.00 Mile
Radius

Population by Age Range



Household Income by Income Range



	1.00 Mile Radius	3.00 Mile Radius	5.00 Mile Radius
Population			
Current Estimated Population	13,019	71,677	180,558
2010 Census Population	12,838	69,898	175,423
2000 Census Population	11,316	61,096	133,256
Historical Annual Growth 2000 to 2010	1.27%	1.36%	2.79%
Estimated Annual Growth 2010 to 2011	0.81%	1.45%	1.66%
Projected Annual Growth 2011 to 2016	2.62%	2.66%	3.03%
Households			
Current Estimated Households	6,091	31,398	74,564
2010 Census Households	5,963	30,592	72,501
2000 Census Households	4,988	25,630	54,190
Historical Annual Growth 2000 to 2010	1.8%	1.8%	3.0%
Estimated Annual Growth 2010 to 2011	1.2%	1.5%	1.6%
Projected Annual Growth 2011 to 2016	2.7%	2.7%	3.0%
Population per Household	2.1	2.3	2.4
Ethnicity			
White	73.1%	73.7%	74.3%
Black or African American	13.3%	13.6%	12.2%
Asian & Pacific Islander	4.5%	4.7%	5.6%
Other Races	9.1%	8.0%	7.9%
Hispanic or Latino Population	14.8%	11.7%	11.7%
Non Hispanic or Latino Population	85.2%	88.3%	88.3%

This report was produced using data from private and government sources deemed to be reliable and is herein provided without representation or warranty.