

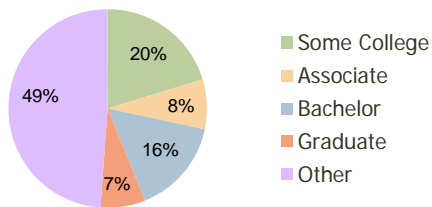
Boynton Lakes Plaza Boynton Beach, FL	1.00 Mile Radius	3.00 Mile Radius	5.00 Mile Radius
--	---------------------	---------------------	---------------------

Current Year Demographics

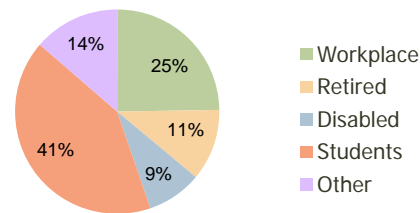
Current Population	13,000	110,507	279,865
Adjusted Total Pop (Carrier Route)	12,441	122,313	317,074
Total Daytime Pop	9,702	122,054	261,220
Workplace Pop	2,487	30,183	70,841
Average Household Income	\$66,861	\$62,815	\$63,818
Median Household Income	\$57,071	\$49,140	\$47,928
Total Housing Units	5,088	42,038	109,487
Median Home Value	\$150,853	\$140,928	\$142,600
Bachelors Degree	18.4%	15.5%	15.3%
Graduate Degree	6.6%	7.3%	8.5%
Total Consumer Spending/Capita	\$287	\$282	\$280

2016 Demographic Projections

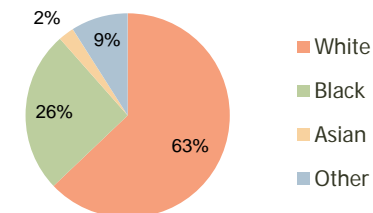
Projected Population	13,600	116,487	296,430
Projected 5 Year Pop Growth	0.9%	1.1%	1.2%
Projected Households	5,326	44,454	116,304
Projected 5 Year Household Growth	0.9%	1.1%	1.2%



Education (3-Mile)



Daytime Population (3-Mile)



Ethnicity (3-Mile)

This report was produced using data from private and government sources deemed to be reliable and is herein provided without representation or warranty.

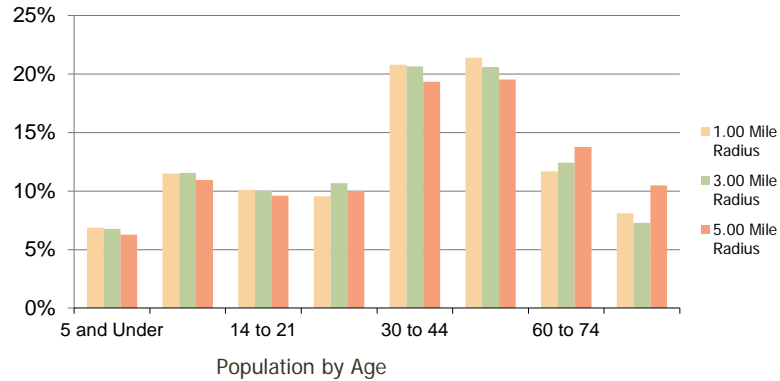
Boynton Lakes Plaza
Boynton Beach, FL

1.00 Mile
Radius

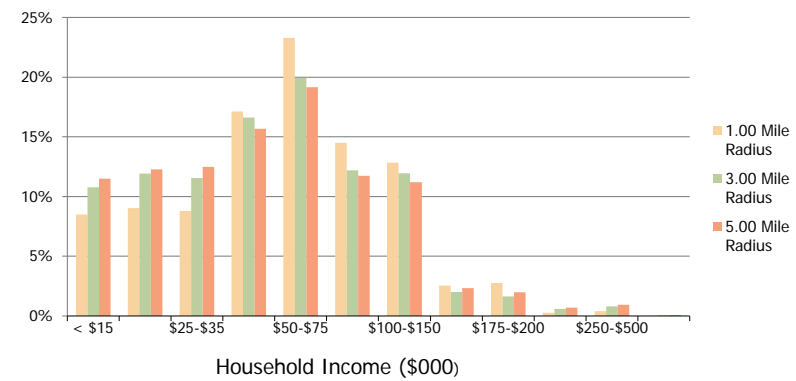
3.00 Mile
Radius

5.00 Mile
Radius

Population by Age Range



Household Income by Income Range



Population	Current Estimated Population	13,000	110,507	279,865
	2010 Census Population	13,027	110,792	280,285
	2000 Census Population	11,620	92,691	244,412
	Historical Annual Growth 2000 to 2010	1.15%	1.80%	1.38%
	Estimated Annual Growth 2010 to 2011	-0.12%	-0.15%	-0.09%
Households	Projected Annual Growth 2011 to 2016	0.91%	1.06%	1.16%
	Current Estimated Households	5,088	42,038	109,487
	2010 Census Households	5,101	42,101	109,775
	2000 Census Households	4,783	36,487	100,969
	Historical Annual Growth 2000 to 2010	0.6%	1.4%	0.8%
Ethnicity	Estimated Annual Growth 2010 to 2011	-0.1%	-0.1%	-0.2%
	Projected Annual Growth 2011 to 2016	0.9%	1.1%	1.2%
	Population per Household	2.5	2.6	2.5
	White	70.9%	62.9%	67.7%
	Black or African American	17.0%	25.6%	20.3%
	Asian & Pacific Islander	3.1%	2.5%	2.2%
	Other Races	9.0%	9.0%	9.8%
Hispanic or Latino Population	23.0%	22.0%	25.5%	
Non Hispanic or Latino Population	77.0%	78.0%	74.5%	

This report was produced using data from private and government sources deemed to be reliable and is herein provided without representation or warranty.