

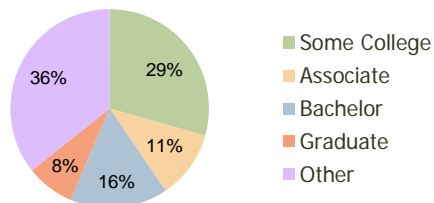
Pine Tree Plaza Orange Park, FL	1.00 Mile Radius	3.00 Mile Radius	5.00 Mile Radius
------------------------------------	---------------------	---------------------	---------------------

### Current Year Demographics

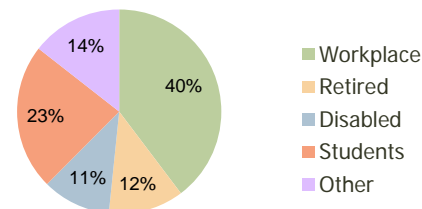
Current Population	9,855	56,489	134,986
Adjusted Total Pop (Carrier Route)	10,118	61,218	138,244
Total Daytime Pop	12,901	58,656	105,508
Workplace Pop	4,540	23,291	38,075
Average Household Income	\$79,613	\$68,223	\$71,914
Median Household Income	\$54,609	\$54,841	\$59,805
Total Housing Units	3,701	21,891	49,229
Median Home Value	\$129,432	\$125,491	\$131,805
Bachelors Degree	16.6%	16.0%	17.6%
Graduate Degree	10.2%	7.8%	8.0%
Total Consumer Spending/Capita	\$267	\$269	\$260

### 2016 Demographic Projections

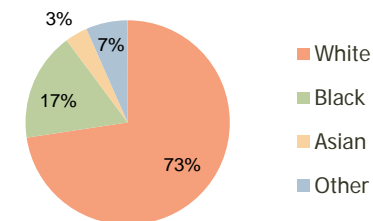
Projected Population	11,602	65,502	153,461
Projected 5 Year Pop Growth	3.3%	3.0%	2.6%
Projected Households	4,358	25,393	56,069
Projected 5 Year Household Growth	3.3%	3.0%	2.6%



Education (3-Mile)



Daytime Population (3-Mile)

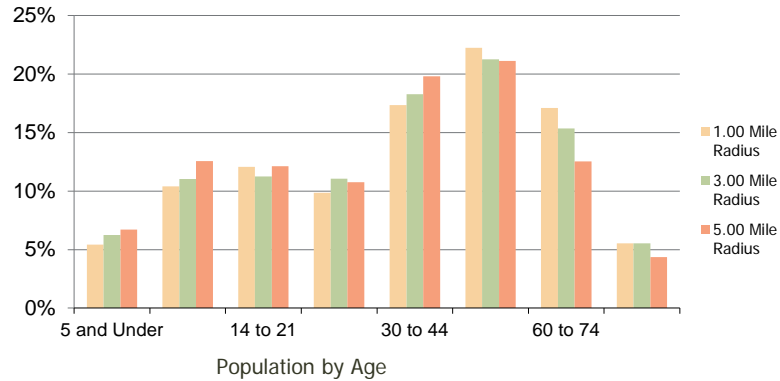


Ethnicity (3-Mile)

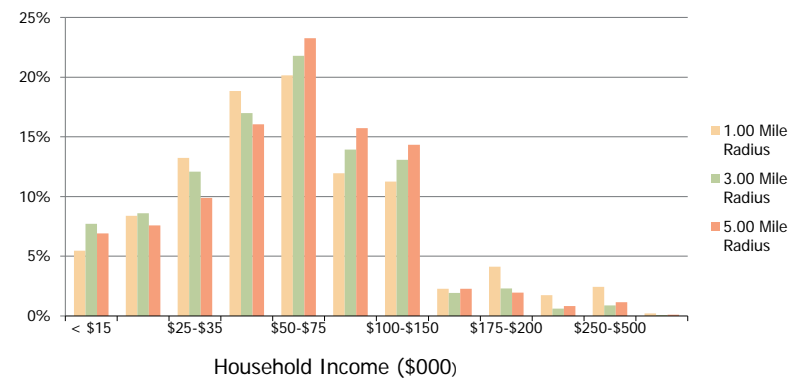
This report was produced using data from private and government sources deemed to be reliable and is herein provided without representation or warranty.

<b>Pine Tree Plaza</b> Orange Park, FL	1.00 Mile Radius	3.00 Mile Radius	5.00 Mile Radius
---	------------------	------------------	------------------

**Population by Age Range**



**Household Income by Income Range**



	1.00 Mile Radius	3.00 Mile Radius	5.00 Mile Radius
<b>Population</b>			
Current Estimated Population	9,855	56,489	134,986
2010 Census Population	9,584	54,885	131,611
2000 Census Population	9,913	54,514	106,121
Historical Annual Growth 2000 to 2010	-0.34%	0.07%	2.18%
Estimated Annual Growth 2010 to 2011	1.60%	1.66%	1.46%
Projected Annual Growth 2011 to 2016	3.32%	3.01%	2.60%
<b>Households</b>			
Current Estimated Households	3,701	21,891	49,229
2010 Census Households	3,599	21,262	47,965
2000 Census Households	3,456	20,278	37,804
Historical Annual Growth 2000 to 2010	0.4%	0.5%	2.4%
Estimated Annual Growth 2010 to 2011	1.6%	1.7%	1.5%
Projected Annual Growth 2011 to 2016	3.3%	3.0%	2.6%
Population per Household	2.7	2.6	2.7
<b>Ethnicity</b>			
White	78.0%	72.6%	69.7%
Black or African American	12.1%	17.2%	18.9%
Asian & Pacific Islander	3.4%	3.6%	4.5%
Other Races	6.6%	6.6%	6.9%
Hispanic or Latino Population	10.3%	9.5%	9.8%
Non Hispanic or Latino Population	89.7%	90.5%	90.2%

This report was produced using data from private and government sources deemed to be reliable and is herein provided without representation or warranty.