

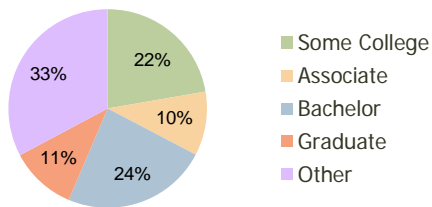
Bloomington Square Brandon, FL	1.00 Mile Radius	3.00 Mile Radius	5.00 Mile Radius
-----------------------------------	---------------------	---------------------	---------------------

Current Year Demographics

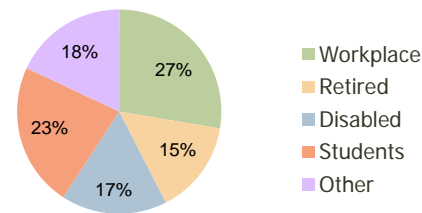
Current Population	8,589	75,265	183,746
Adjusted Total Pop (Carrier Route)	9,332	75,165	195,329
Total Daytime Pop	8,590	49,077	140,863
Workplace Pop	2,715	13,571	47,765
Average Household Income	\$84,181	\$87,012	\$77,692
Median Household Income	\$71,842	\$73,140	\$64,027
Total Housing Units	3,135	27,316	68,722
Median Home Value	\$149,388	\$150,933	\$140,859
Bachelors Degree	24.4%	23.7%	22.1%
Graduate Degree	10.5%	10.8%	9.4%
Total Consumer Spending/Capita	\$288	\$285	\$280

2016 Demographic Projections

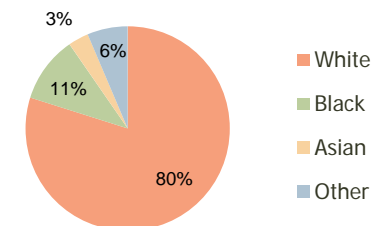
Projected Population	9,029	80,913	204,256
Projected 5 Year Pop Growth	1.0%	1.5%	2.1%
Projected Households	3,300	29,355	76,361
Projected 5 Year Household Growth	1.0%	1.5%	2.1%



Education (3-Mile)



Daytime Population (3-Mile)

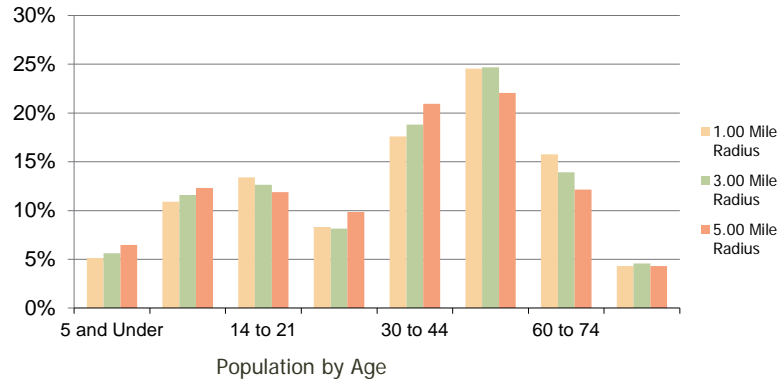


Ethnicity (3-Mile)

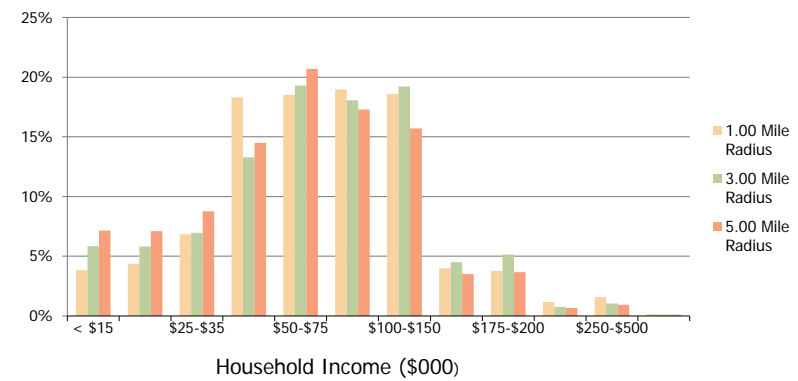
This report was produced using data from private and government sources deemed to be reliable and is herein provided without representation or warranty.

Bloomingdale Square Brandon, FL	1.00 Mile Radius	3.00 Mile Radius	5.00 Mile Radius
------------------------------------	---------------------	---------------------	---------------------

Population by Age Range



Household Income by Income Range



	1.00 Mile Radius	3.00 Mile Radius	5.00 Mile Radius
Population			
Current Estimated Population	8,589	75,265	183,746
2010 Census Population	8,629	74,613	180,261
2000 Census Population	8,789	64,318	128,345
Historical Annual Growth 2000 to 2010	-0.18%	1.50%	3.46%
Estimated Annual Growth 2010 to 2011	-0.27%	0.50%	1.10%
Projected Annual Growth 2011 to 2016	1.01%	1.46%	2.14%
Households			
Current Estimated Households	3,135	27,316	68,722
2010 Census Households	3,150	27,095	67,482
2000 Census Households	2,936	22,499	47,144
Historical Annual Growth 2000 to 2010	0.7%	1.9%	3.7%
Estimated Annual Growth 2010 to 2011	-0.3%	0.5%	1.0%
Projected Annual Growth 2011 to 2016	1.0%	1.5%	2.1%
Population per Household	2.7	2.7	2.7
Ethnicity			
White	83.9%	79.9%	76.6%
Black or African American	9.4%	10.5%	12.5%
Asian & Pacific Islander	2.1%	3.2%	3.3%
Other Races	4.6%	6.4%	7.5%
Hispanic or Latino Population	13.5%	16.1%	18.4%
Non Hispanic or Latino Population	86.5%	83.9%	81.6%

This report was produced using data from private and government sources deemed to be reliable and is herein provided without representation or warranty.