

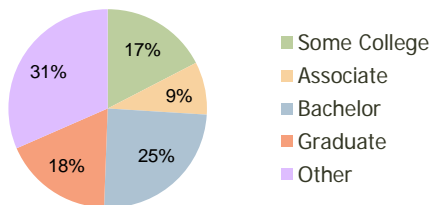
Pike Creek Wilmington, DE	1.00 Mile Radius	3.00 Mile Radius	5.00 Mile Radius
------------------------------	---------------------	---------------------	---------------------

### Current Year Demographics

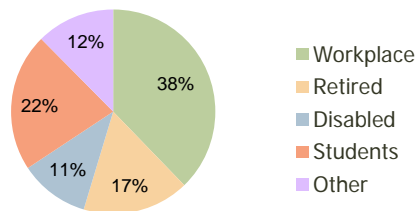
Current Population	9,807	60,616	134,198
Adjusted Total Pop (Carrier Route)	9,867	65,256	139,438
Total Daytime Pop	9,129	47,353	153,268
Workplace Pop	2,893	17,883	67,022
Average Household Income	\$101,415	\$98,161	\$92,515
Median Household Income	\$79,913	\$77,465	\$68,975
Total Housing Units	4,232	23,927	51,176
Median Home Value	\$239,015	\$244,028	\$229,033
Bachelors Degree	28.0%	24.6%	21.6%
Graduate Degree	22.4%	17.8%	15.7%
Total Consumer Spending/Capita	\$312	\$310	\$302

### 2016 Demographic Projections

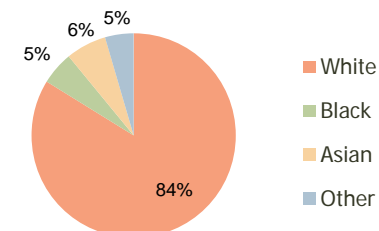
Projected Population	10,077	62,214	137,770
Projected 5 Year Pop Growth	0.5%	0.5%	0.5%
Projected Households	4,355	24,520	52,539
Projected 5 Year Household Growth	0.6%	0.5%	0.5%



Education (3-Mile)



Daytime Population (3-Mile)

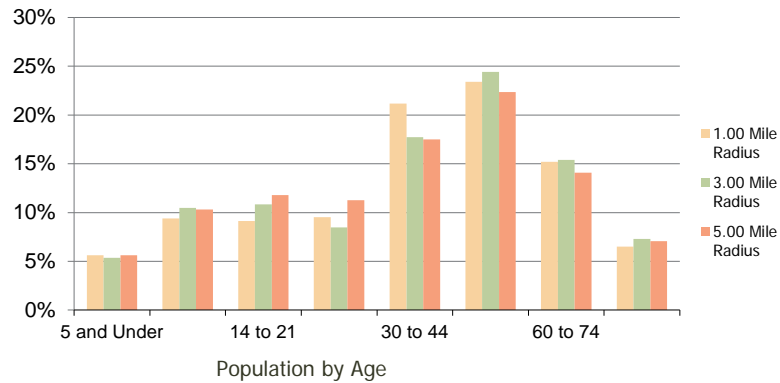


Ethnicity (3-Mile)

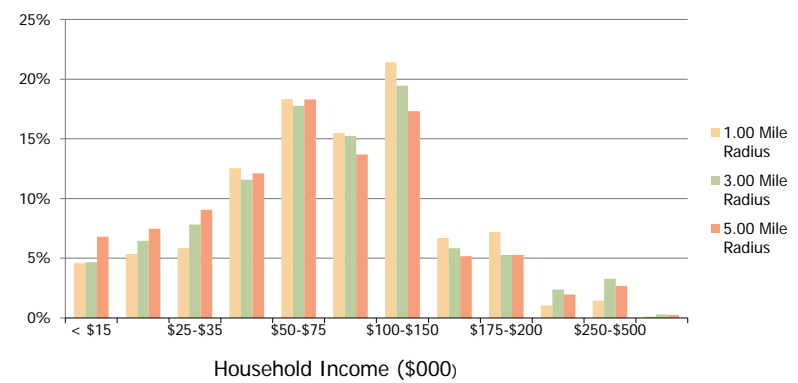
This report was produced using data from private and government sources deemed to be reliable and is herein provided without representation or warranty.

Pike Creek Wilmington, DE	1.00 Mile Radius	3.00 Mile Radius	5.00 Mile Radius
------------------------------	---------------------	---------------------	---------------------

**Population by Age Range**



**Household Income by Income Range**



<b>Population</b>	Current Estimated Population	9,807	60,616	134,198
	2010 Census Population	9,847	61,019	134,911
	2000 Census Population	9,802	61,688	133,858
	Historical Annual Growth 2000 to 2010	0.05%	-0.11%	0.08%
	Estimated Annual Growth 2010 to 2011	-0.23%	-0.38%	-0.30%
<b>Households</b>	Projected Annual Growth 2011 to 2016	0.55%	0.52%	0.53%
	Current Estimated Households	4,232	23,927	51,176
	2010 Census Households	4,252	24,103	51,452
	2000 Census Households	4,132	24,007	51,060
	Historical Annual Growth 2000 to 2010	0.3%	0.0%	0.1%
<b>Ethnicity</b>	Estimated Annual Growth 2010 to 2011	-0.3%	-0.4%	-0.3%
	Projected Annual Growth 2011 to 2016	0.6%	0.5%	0.5%
	Population per Household	2.2	2.5	2.6
	White	79.4%	83.8%	80.0%
	Black or African American	6.3%	5.2%	8.3%
	Asian & Pacific Islander	10.7%	6.4%	5.7%
	Other Races	3.6%	4.5%	6.0%
Hispanic or Latino Population	4.7%	6.7%	8.9%	
Non Hispanic or Latino Population	95.3%	93.3%	91.1%	

This report was produced using data from private and government sources deemed to be reliable and is herein provided without representation or warranty.