

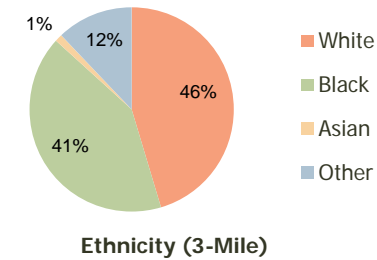
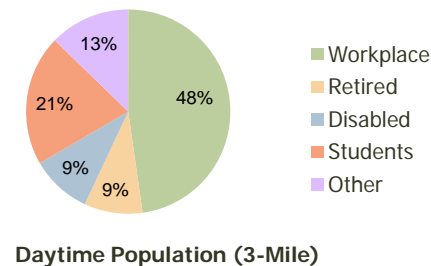
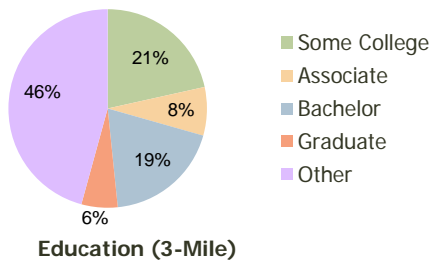
Garner Towne Square Garner, NC	1.00 Mile Radius	3.00 Mile Radius	5.00 Mile Radius
-----------------------------------	---------------------	---------------------	---------------------

Current Year Demographics

Current Population	5,910	42,205	118,234
Adjusted Total Pop (Carrier Route)	4,819	43,597	110,872
Total Daytime Pop	10,056	46,866	177,552
Workplace Pop	4,659	22,376	72,401
Average Household Income	\$52,277	\$59,062	\$56,977
Median Household Income	\$45,526	\$49,358	\$44,877
Total Housing Units	2,392	16,057	43,275
Median Home Value	\$117,367	\$127,034	\$135,084
Bachelors Degree	11.1%	19.0%	20.0%
Graduate Degree	3.0%	5.9%	8.8%
Total Consumer Spending/Capita	\$273	\$267	\$258

2016 Demographic Projections

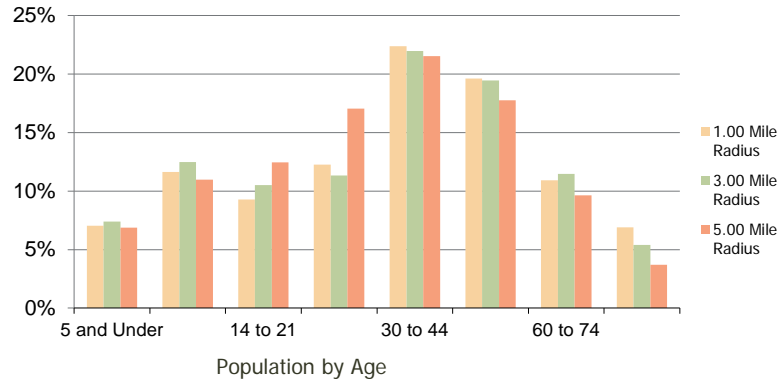
Projected Population	7,590	49,060	137,042
Projected 5 Year Pop Growth	5.1%	3.1%	3.0%
Projected Households	3,112	18,754	51,132
Projected 5 Year Household Growth	5.4%	3.2%	3.4%



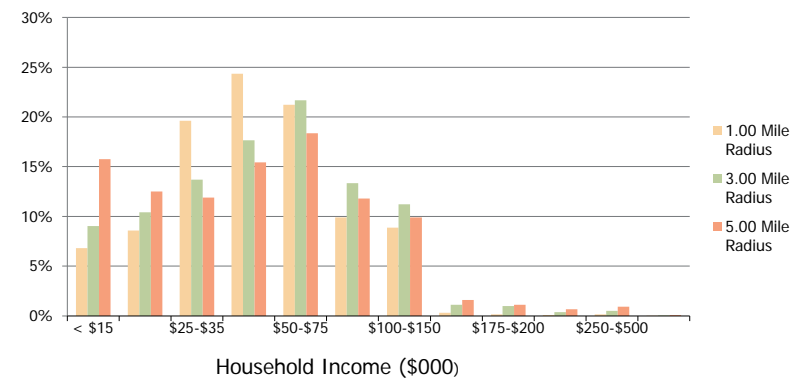
This report was produced using data from private and government sources deemed to be reliable and is herein provided without representation or warranty.

Garner Towne Square Garner, NC	1.00 Mile Radius	3.00 Mile Radius	5.00 Mile Radius
--	------------------	------------------	------------------

Population by Age Range



Household Income by Income Range



	1.00 Mile Radius	3.00 Mile Radius	5.00 Mile Radius
Population			
Current Estimated Population	5,910	42,205	118,234
2010 Census Population	5,393	41,041	114,494
2000 Census Population	5,062	33,199	88,488
Historical Annual Growth 2000 to 2010	0.64%	2.14%	2.61%
Estimated Annual Growth 2010 to 2011	5.37%	1.61%	1.85%
Projected Annual Growth 2011 to 2016	5.13%	3.06%	3.00%
Households			
Current Estimated Households	2,392	16,057	43,275
2010 Census Households	2,167	15,593	41,696
2000 Census Households	2,134	12,744	32,579
Historical Annual Growth 2000 to 2010	0.2%	2.0%	2.5%
Estimated Annual Growth 2010 to 2011	5.8%	1.7%	2.1%
Projected Annual Growth 2011 to 2016	5.4%	3.2%	3.4%
Population per Household	2.4	2.6	2.5
Ethnicity			
White	54.3%	45.4%	45.2%
Black or African American	33.0%	41.4%	42.0%
Asian & Pacific Islander	1.3%	1.2%	2.7%
Other Races	11.3%	12.1%	10.0%
Hispanic or Latino Population	16.9%	16.4%	13.0%
Non Hispanic or Latino Population	83.1%	83.6%	87.0%

This report was produced using data from private and government sources deemed to be reliable and is herein provided without representation or warranty.