

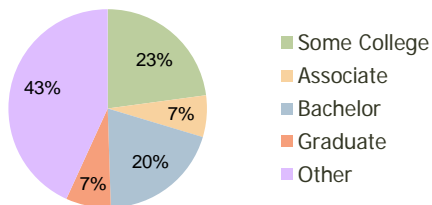
Nashboro Village Nashville, TN	1.00 Mile Radius	3.00 Mile Radius	5.00 Mile Radius
-----------------------------------	---------------------	---------------------	---------------------

Current Year Demographics

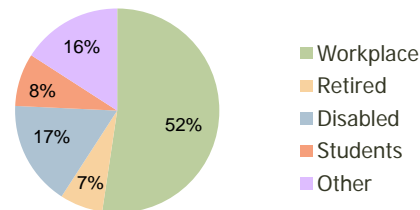
Current Population	11,297	63,321	153,714
Adjusted Total Pop (Carrier Route)	9,965	66,009	164,712
Total Daytime Pop	8,083	48,951	137,881
Workplace Pop	4,464	25,625	71,480
Average Household Income	\$52,257	\$52,896	\$50,322
Median Household Income	\$43,082	\$43,926	\$41,579
Total Housing Units	4,675	24,081	60,004
Median Home Value	\$135,237	\$125,284	\$123,742
Bachelors Degree	23.9%	19.8%	18.5%
Graduate Degree	9.2%	7.3%	6.7%
Total Consumer Spending/Capita	\$244	\$248	\$242

2016 Demographic Projections

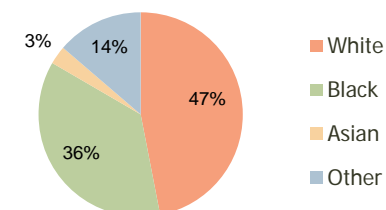
Projected Population	11,179	67,297	161,992
Projected 5 Year Pop Growth	-0.2%	1.2%	1.1%
Projected Households	4,658	25,761	63,384
Projected 5 Year Household Growth	-0.1%	1.4%	1.1%



Education (3-Mile)



Daytime Population (3-Mile)

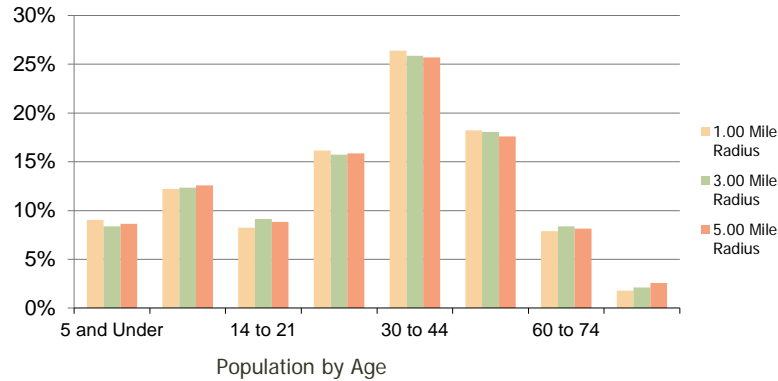


Ethnicity (3-Mile)

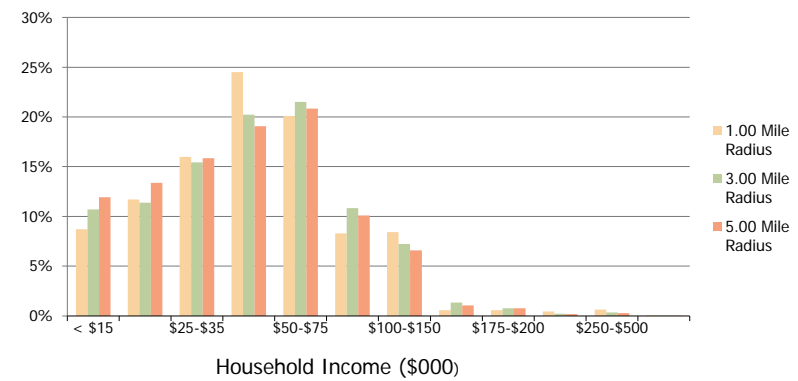
This report was produced using data from private and government sources deemed to be reliable and is herein provided without representation or warranty.

Nashboro Village Nashville, TN	1.00 Mile Radius	3.00 Mile Radius	5.00 Mile Radius
-----------------------------------	---------------------	---------------------	---------------------

Population by Age Range



Household Income by Income Range



Population	Current Estimated Population	11,297	63,321	153,714
	2010 Census Population	11,351	62,834	152,651
	2000 Census Population	8,805	52,471	125,872
	Historical Annual Growth 2000 to 2010	2.57%	1.82%	1.95%
	Estimated Annual Growth 2010 to 2011	-0.27%	0.44%	0.40%
Households	Projected Annual Growth 2011 to 2016	-0.21%	1.23%	1.05%
	Current Estimated Households	4,675	24,081	60,004
	2010 Census Households	4,674	23,837	59,490
	2000 Census Households	3,669	21,263	52,928
	Historical Annual Growth 2000 to 2010	2.5%	1.1%	1.2%
Ethnicity	Estimated Annual Growth 2010 to 2011	0.0%	0.6%	0.5%
	Projected Annual Growth 2011 to 2016	-0.1%	1.4%	1.1%
	Population per Household	2.4	2.5	2.5
	White	49.5%	46.9%	51.4%
	Black or African American	35.5%	36.4%	29.6%
	Asian & Pacific Islander	2.7%	2.9%	4.0%
	Other Races	12.3%	13.7%	15.1%
Hispanic or Latino Population	15.4%	19.1%	21.0%	
Non Hispanic or Latino Population	84.6%	80.9%	79.0%	

This report was produced using data from private and government sources deemed to be reliable and is herein provided without representation or warranty.