

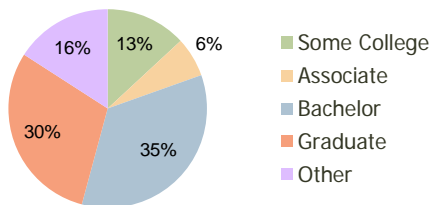
Southpoint Crossing Durham, NC	1.00 Mile Radius	3.00 Mile Radius	5.00 Mile Radius
-----------------------------------	---------------------	---------------------	---------------------

Current Year Demographics

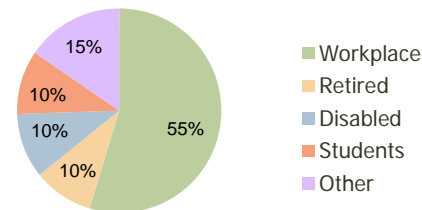
Current Population	9,889	51,878	111,171
Adjusted Total Pop (Carrier Route)	10,174	54,451	114,639
Total Daytime Pop	10,468	42,978	121,207
Workplace Pop	7,100	23,504	63,420
Average Household Income	\$74,035	\$82,788	\$77,817
Median Household Income	\$58,818	\$65,820	\$58,400
Total Housing Units	4,877	22,847	48,484
Median Home Value	\$193,717	\$201,517	\$199,719
Bachelors Degree	36.7%	34.6%	31.1%
Graduate Degree	33.0%	29.9%	27.3%
Total Consumer Spending/Capita	\$301	\$305	\$281

2016 Demographic Projections

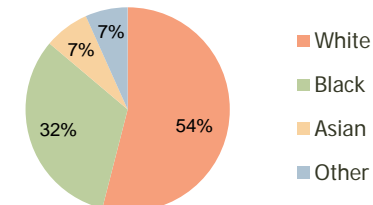
Projected Population	10,265	55,207	121,990
Projected 5 Year Pop Growth	0.7%	1.3%	1.9%
Projected Households	5,066	24,273	53,328
Projected 5 Year Household Growth	0.8%	1.2%	1.9%



Education (3-Mile)



Daytime Population (3-Mile)

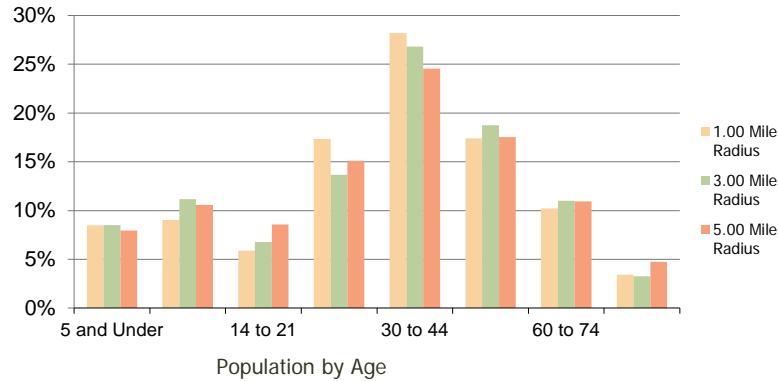


Ethnicity (3-Mile)

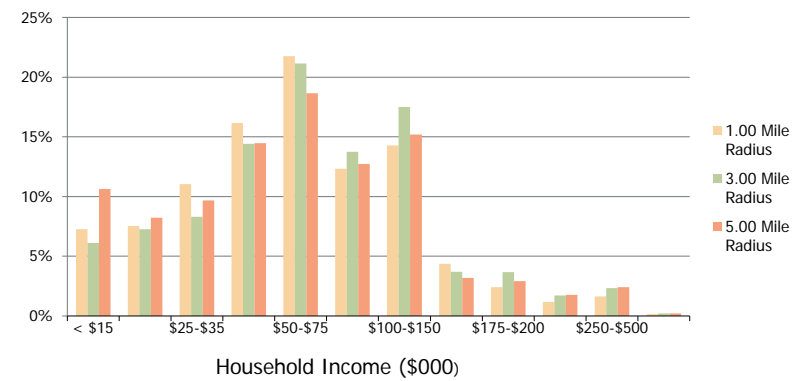
This report was produced using data from private and government sources deemed to be reliable and is herein provided without representation or warranty.

Southpoint Crossing Durham, NC	1.00 Mile Radius	3.00 Mile Radius	5.00 Mile Radius
--	------------------	------------------	------------------

Population by Age Range



Household Income by Income Range



	1.00 Mile Radius	3.00 Mile Radius	5.00 Mile Radius
Population			
Current Estimated Population	9,889	51,878	111,171
2010 Census Population	9,816	51,136	108,904
2000 Census Population	8,560	37,044	84,084
Historical Annual Growth 2000 to 2010	1.38%	3.28%	2.62%
Estimated Annual Growth 2010 to 2011	0.43%	0.83%	1.18%
Projected Annual Growth 2011 to 2016	0.75%	1.25%	1.87%
Households			
Current Estimated Households	4,877	22,847	48,484
2010 Census Households	4,838	22,528	47,442
2000 Census Households	3,962	15,893	35,585
Historical Annual Growth 2000 to 2010	2.0%	3.6%	2.9%
Estimated Annual Growth 2010 to 2011	0.5%	0.8%	1.2%
Projected Annual Growth 2011 to 2016	0.8%	1.2%	1.9%
Population per Household	2.0	2.3	2.2
Ethnicity			
White	55.0%	54.0%	50.4%
Black or African American	31.3%	32.1%	34.0%
Asian & Pacific Islander	7.1%	7.1%	6.9%
Other Races	6.5%	6.7%	8.7%
Hispanic or Latino Population	6.6%	7.5%	10.4%
Non Hispanic or Latino Population	93.4%	92.5%	89.6%

This report was produced using data from private and government sources deemed to be reliable and is herein provided without representation or warranty.