

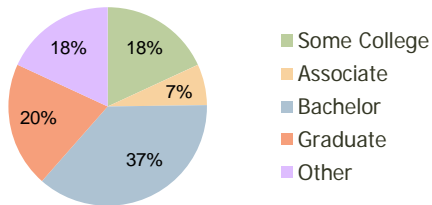
Queensborough Shopping Center Mt. Pleasant, SC	1.00 Mile Radius	3.00 Mile Radius	5.00 Mile Radius
---	---------------------	---------------------	---------------------

Current Year Demographics

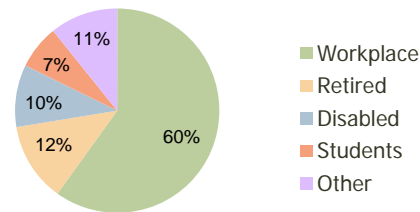
Current Population	9,553	41,101	80,799
Adjusted Total Pop (Carrier Route)	11,809	43,804	85,424
Total Daytime Pop	11,452	42,449	122,223
Workplace Pop	7,218	25,434	68,584
Average Household Income	\$102,528	\$98,069	\$91,809
Median Household Income	\$72,817	\$70,235	\$62,686
Total Housing Units	4,275	18,033	34,303
Median Home Value	\$314,423	\$275,970	\$296,143
Bachelors Degree	37.1%	36.7%	34.3%
Graduate Degree	21.9%	20.4%	20.3%
Total Consumer Spending/Capita	\$289	\$289	\$259

2016 Demographic Projections

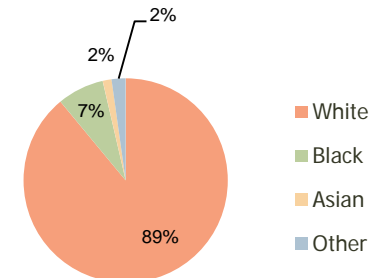
Projected Population	10,154	44,730	87,209
Projected 5 Year Pop Growth	1.2%	1.7%	1.5%
Projected Households	4,560	19,692	37,090
Projected 5 Year Household Growth	1.3%	1.8%	1.6%



Education (3-Mile)



Daytime Population (3-Mile)



Ethnicity (3-Mile)

This report was produced using data from private and government sources deemed to be reliable and is herein provided without representation or warranty.

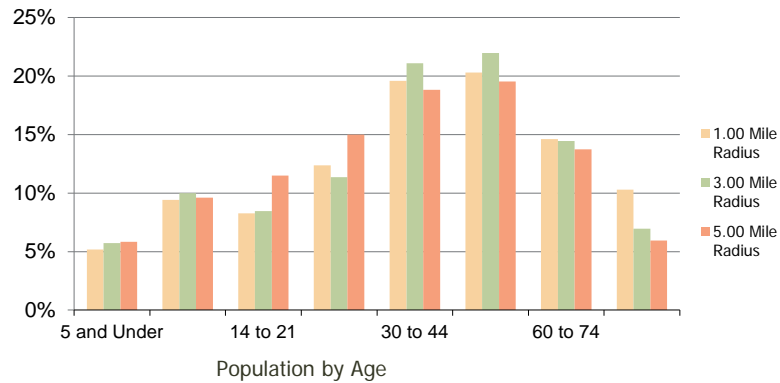
Queensborough Shopping Center
Mt. Pleasant, SC

1.00 Mile
Radius

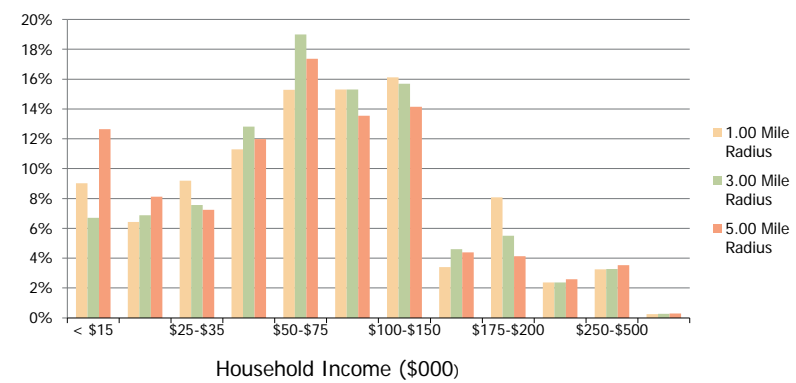
3.00 Mile
Radius

5.00 Mile
Radius

Population by Age Range



Household Income by Income Range



	1.00 Mile Radius	3.00 Mile Radius	5.00 Mile Radius	
Population	Current Estimated Population	9,553	41,101	80,799
	2010 Census Population	9,435	40,204	79,463
	2000 Census Population	8,268	36,188	71,250
	Historical Annual Growth 2000 to 2010	1.33%	1.06%	1.10%
	Estimated Annual Growth 2010 to 2011	0.71%	1.27%	0.96%
Projected Annual Growth 2011 to 2016	1.23%	1.71%	1.54%	
Households	Current Estimated Households	4,275	18,033	34,303
	2010 Census Households	4,217	17,615	33,685
	2000 Census Households	3,450	14,837	29,092
	Historical Annual Growth 2000 to 2010	2.0%	1.7%	1.5%
	Estimated Annual Growth 2010 to 2011	0.8%	1.3%	1.0%
	Projected Annual Growth 2011 to 2016	1.3%	1.8%	1.6%
Population per Household	2.2	2.3	2.2	
Ethnicity	White	88.6%	89.0%	80.9%
	Black or African American	7.9%	7.4%	15.8%
	Asian & Pacific Islander	1.2%	1.4%	1.3%
	Other Races	2.2%	2.2%	2.0%
	Hispanic or Latino Population	3.3%	2.9%	2.4%
Non Hispanic or Latino Population	96.7%	97.1%	97.6%	

This report was produced using data from private and government sources deemed to be reliable and is herein provided without representation or warranty.