

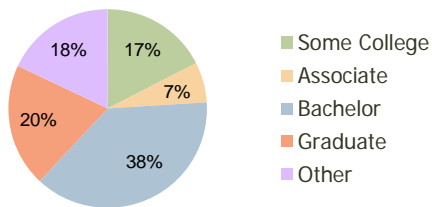
Kroger New Albany Center New Albany, OH	1.00 Mile Radius	3.00 Mile Radius	5.00 Mile Radius
--	---------------------	---------------------	---------------------

### Current Year Demographics

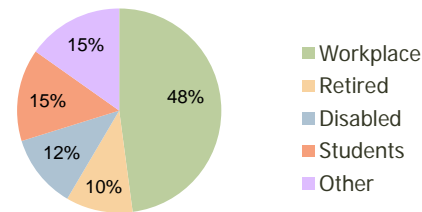
Current Population	6,973	35,403	89,244
Adjusted Total Pop (Carrier Route)	7,890	36,207	96,625
Total Daytime Pop	8,769	26,790	63,284
Workplace Pop	4,849	12,833	26,787
Average Household Income	\$114,874	\$110,988	\$100,323
Median Household Income	\$79,363	\$81,575	\$76,907
Total Housing Units	2,994	14,921	36,487
Median Home Value	\$252,201	\$207,634	\$183,199
Bachelors Degree	37.4%	37.9%	34.7%
Graduate Degree	21.3%	20.1%	17.5%
Total Consumer Spending/Capita	\$0	\$284	\$305

### 2016 Demographic Projections

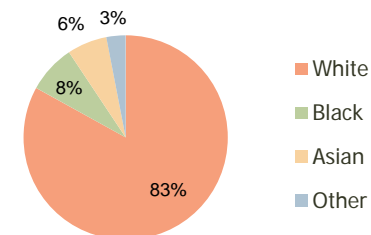
Projected Population	7,685	39,739	96,127
Projected 5 Year Pop Growth	2.0%	2.3%	1.5%
Projected Households	3,301	16,724	39,280
Projected 5 Year Household Growth	2.0%	2.3%	1.5%



Education (3-Mile)



Daytime Population (3-Mile)

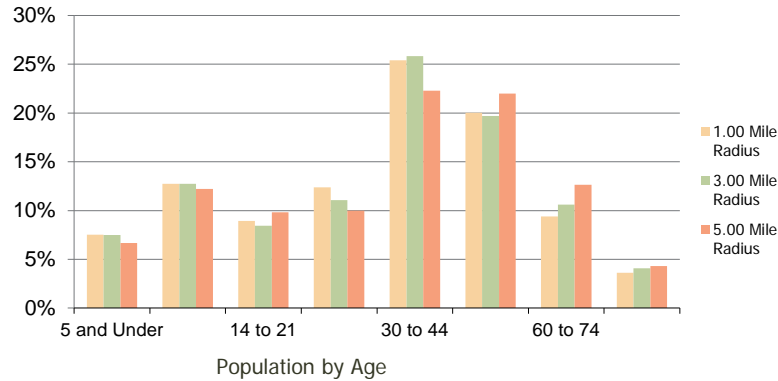


Ethnicity (3-Mile)

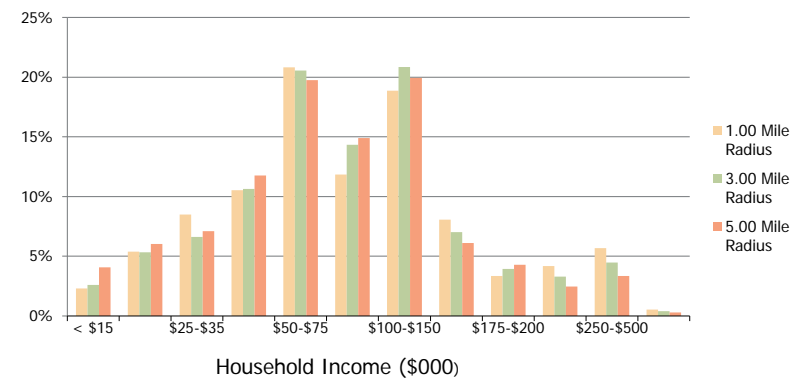
This report was produced using data from private and government sources deemed to be reliable and is herein provided without representation or warranty.

<b>Kroger New Albany Center</b> New Albany, OH	1.00 Mile Radius	3.00 Mile Radius	5.00 Mile Radius
---	------------------	------------------	------------------

**Population by Age Range**



**Household Income by Income Range**



	1.00 Mile Radius	3.00 Mile Radius	5.00 Mile Radius
<b>Population</b>			
Current Estimated Population	6,973	35,403	89,244
2010 Census Population	6,766	34,187	87,985
2000 Census Population	3,121	16,366	67,975
Historical Annual Growth 2000 to 2010	8.04%	7.64%	2.61%
Estimated Annual Growth 2010 to 2011	1.74%	2.02%	0.81%
Projected Annual Growth 2011 to 2016	1.96%	2.34%	1.50%
<b>Households</b>			
Current Estimated Households	2,994	14,921	36,487
2010 Census Households	2,902	14,433	36,021
2000 Census Households	1,149	6,492	26,054
Historical Annual Growth 2000 to 2010	9.7%	8.3%	3.3%
Estimated Annual Growth 2010 to 2011	1.8%	1.9%	0.7%
Projected Annual Growth 2011 to 2016	2.0%	2.3%	1.5%
Population per Household	2.3	2.4	2.4
<b>Ethnicity</b>			
White	85.9%	83.0%	82.5%
Black or African American	5.4%	7.6%	9.7%
Asian & Pacific Islander	5.9%	6.3%	4.3%
Other Races	2.9%	3.0%	3.4%
Hispanic or Latino Population	2.2%	2.4%	2.5%
Non Hispanic or Latino Population	97.8%	97.6%	97.5%

This report was produced using data from private and government sources deemed to be reliable and is herein provided without representation or warranty.