

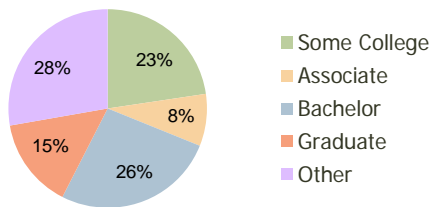
Frankfort Crossing Frankfort, IL	1.00 Mile Radius	3.00 Mile Radius	5.00 Mile Radius
-------------------------------------	---------------------	---------------------	---------------------

Current Year Demographics

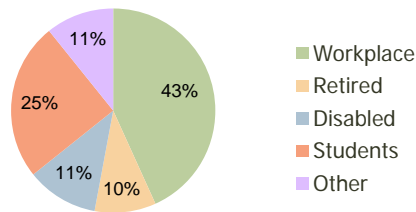
Current Population	5,885	44,548	98,036
Adjusted Total Pop (Carrier Route)	5,878	45,514	101,212
Total Daytime Pop	11,598	41,324	85,470
Workplace Pop	4,659	17,858	32,778
Average Household Income	\$112,592	\$109,961	\$104,128
Median Household Income	\$92,251	\$94,963	\$89,290
Total Housing Units	2,195	14,799	33,550
Median Home Value	\$255,515	\$260,019	\$241,487
Bachelors Degree	28.3%	26.4%	23.4%
Graduate Degree	15.9%	14.7%	13.1%
Total Consumer Spending/Capita	\$341	\$340	\$327

2016 Demographic Projections

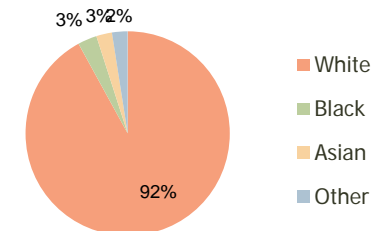
Projected Population	6,555	50,930	106,713
Projected 5 Year Pop Growth	2.2%	2.7%	1.7%
Projected Households	2,449	16,903	36,358
Projected 5 Year Household Growth	2.2%	2.7%	1.6%



Education (3-Mile)



Daytime Population (3-Mile)

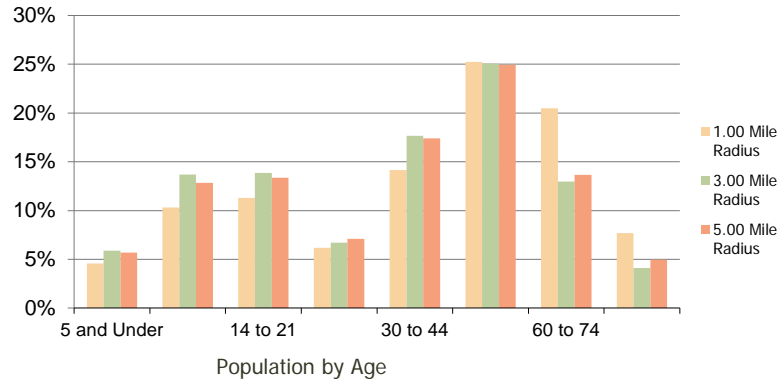


Ethnicity (3-Mile)

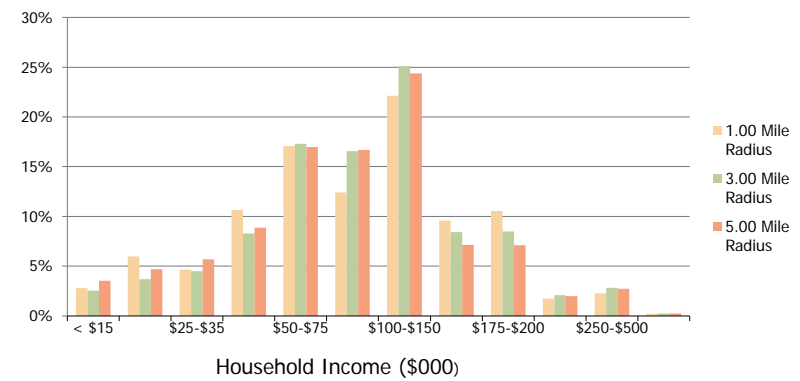
This report was produced using data from private and government sources deemed to be reliable and is herein provided without representation or warranty.

Frankfort Crossing Frankfort, IL	1.00 Mile Radius	3.00 Mile Radius	5.00 Mile Radius
--	------------------	------------------	------------------

Population by Age Range



Household Income by Income Range



	1.00 Mile Radius	3.00 Mile Radius	5.00 Mile Radius
Population			
Current Estimated Population	5,885	44,548	98,036
2010 Census Population	5,863	43,744	96,967
2000 Census Population	4,920	31,810	70,962
Historical Annual Growth 2000 to 2010	1.77%	3.24%	3.17%
Estimated Annual Growth 2010 to 2011	0.21%	1.05%	0.63%
Projected Annual Growth 2011 to 2016	2.18%	2.71%	1.71%
Households			
Current Estimated Households	2,195	14,799	33,550
2010 Census Households	2,188	14,543	33,211
2000 Census Households	1,682	10,144	23,233
Historical Annual Growth 2000 to 2010	2.7%	3.7%	3.6%
Estimated Annual Growth 2010 to 2011	0.2%	1.0%	0.6%
Projected Annual Growth 2011 to 2016	2.2%	2.7%	1.6%
Population per Household	2.6	3.0	2.9
Ethnicity			
White	93.6%	92.0%	85.9%
Black or African American	2.6%	3.0%	8.9%
Asian & Pacific Islander	1.8%	2.5%	2.7%
Other Races	2.1%	2.5%	2.5%
Hispanic or Latino Population	3.6%	5.1%	5.0%
Non Hispanic or Latino Population	96.4%	94.9%	95.0%

This report was produced using data from private and government sources deemed to be reliable and is herein provided without representation or warranty.