

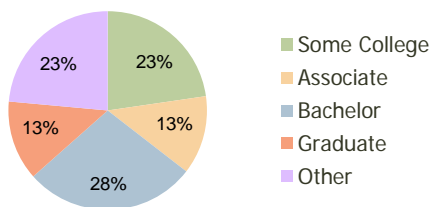
Shoppes at Bartram Park Jacksonville, FL	1.00 Mile Radius	3.00 Mile Radius	5.00 Mile Radius
---	---------------------	---------------------	---------------------

Current Year Demographics

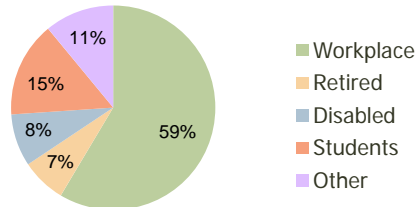
Current Population	4,624	37,731	96,847
Adjusted Total Pop (Carrier Route)	4,577	35,357	99,557
Total Daytime Pop	4,205	40,511	89,942
Workplace Pop	2,294	23,725	47,663
Average Household Income	\$79,316	\$90,350	\$86,119
Median Household Income	\$71,944	\$79,364	\$72,161
Total Housing Units	1,844	14,312	37,849
Median Home Value	\$141,091	\$163,610	\$167,294
Bachelors Degree	21.7%	28.0%	28.2%
Graduate Degree	10.1%	13.0%	12.4%
Total Consumer Spending/Capita	\$278	\$275	\$276

2016 Demographic Projections

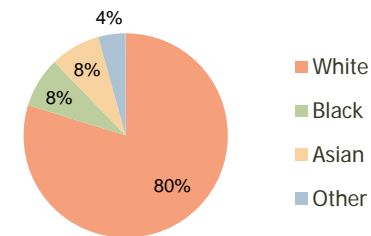
Projected Population	5,305	44,270	112,473
Projected 5 Year Pop Growth	2.8%	3.2%	3.0%
Projected Households	2,120	16,773	43,655
Projected 5 Year Household Growth	2.8%	3.2%	2.9%



Education (3-Mile)



Daytime Population (3-Mile)



Ethnicity (3-Mile)

This report was produced using data from private and government sources deemed to be reliable and is herein provided without representation or warranty.

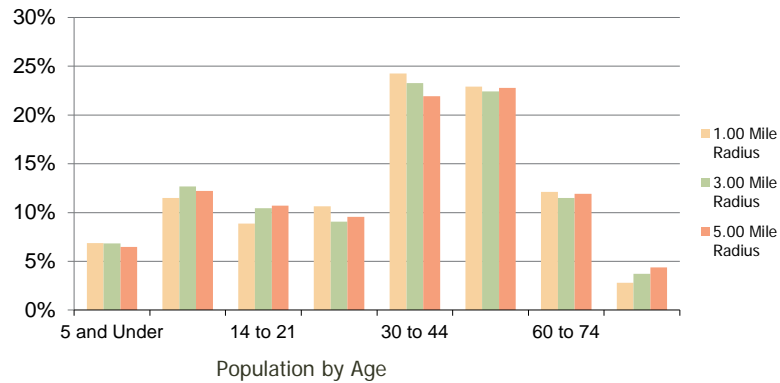
Shoppes at Bartram Park Jacksonville, FL

1.00 Mile
Radius

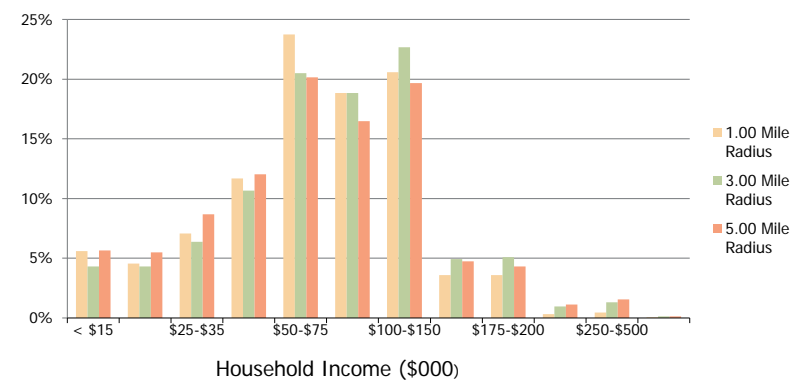
3.00 Mile
Radius

5.00 Mile
Radius

Population by Age Range



Household Income by Income Range



	1.00 Mile Radius	3.00 Mile Radius	5.00 Mile Radius
Population			
Current Estimated Population	4,624	37,731	96,847
2010 Census Population	4,519	36,574	94,188
2000 Census Population	2,594	18,693	66,863
Historical Annual Growth 2000 to 2010	5.71%	6.94%	3.49%
Estimated Annual Growth 2010 to 2011	1.32%	1.80%	1.60%
Projected Annual Growth 2011 to 2016	2.78%	3.25%	3.04%
Households			
Current Estimated Households	1,844	14,312	37,849
2010 Census Households	1,799	13,870	36,887
2000 Census Households	888	6,457	26,179
Historical Annual Growth 2000 to 2010	7.3%	7.9%	3.5%
Estimated Annual Growth 2010 to 2011	1.4%	1.8%	1.5%
Projected Annual Growth 2011 to 2016	2.8%	3.2%	2.9%
Population per Household	2.5	2.6	2.5
Ethnicity			
White	81.1%	79.8%	80.6%
Black or African American	7.6%	8.0%	8.0%
Asian & Pacific Islander	7.0%	7.9%	6.9%
Other Races	4.3%	4.3%	4.5%
Hispanic or Latino Population	6.9%	7.3%	7.6%
Non Hispanic or Latino Population	93.1%	92.7%	92.4%

This report was produced using data from private and government sources deemed to be reliable and is herein provided without representation or warranty.