

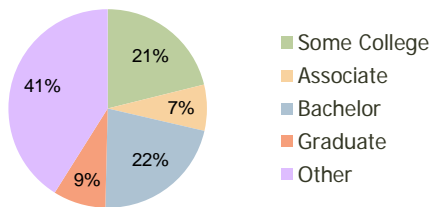
Amerige Heights Town Center Fullerton, CA	1.00 Mile Radius	3.00 Mile Radius	5.00 Mile Radius
--	---------------------	---------------------	---------------------

Current Year Demographics

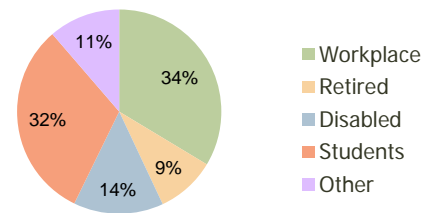
Current Population	21,186	207,072	615,187
Adjusted Total Pop (Carrier Route)	24,357	222,759	641,518
Total Daytime Pop	18,999	217,672	691,140
Workplace Pop	5,877	73,182	262,658
Average Household Income	\$93,531	\$82,772	\$78,214
Median Household Income	\$76,162	\$65,429	\$63,109
Total Housing Units	6,655	63,514	185,550
Median Home Value	\$488,751	\$426,614	\$408,627
Bachelors Degree	33.3%	21.8%	18.3%
Graduate Degree	14.5%	8.6%	7.4%
Total Consumer Spending/Capita	\$312	\$299	\$297

2016 Demographic Projections

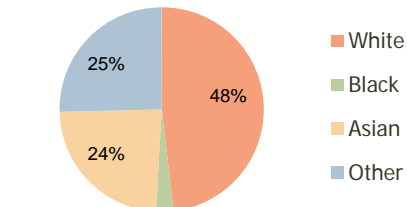
Projected Population	21,308	211,922	639,982
Projected 5 Year Pop Growth	0.1%	0.5%	0.8%
Projected Households	6,707	65,124	193,182
Projected 5 Year Household Growth	0.2%	0.5%	0.8%



Education (3-Mile)



Daytime Population (3-Mile)

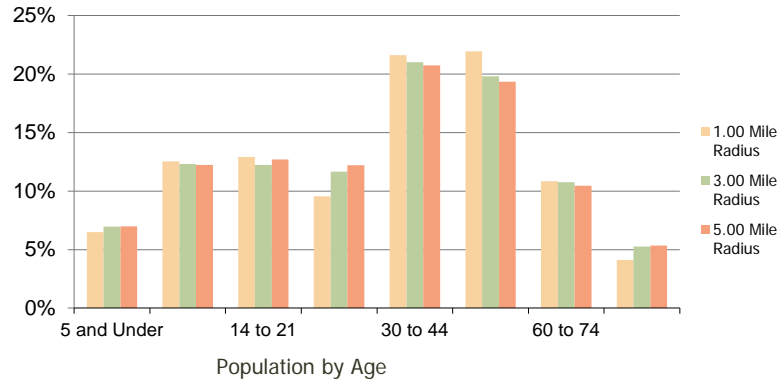


Ethnicity (3-Mile)

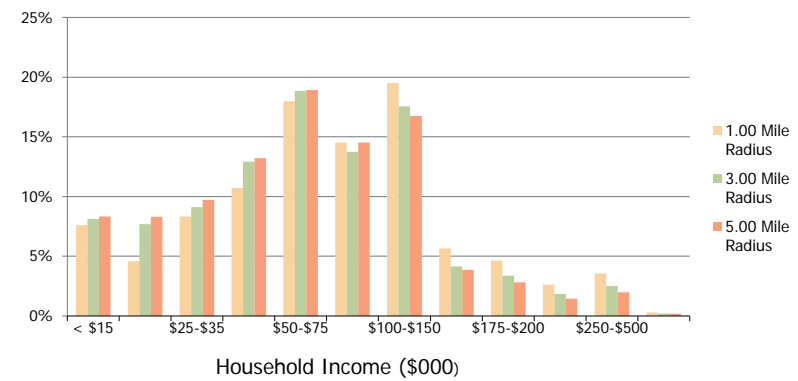
This report was produced using data from private and government sources deemed to be reliable and is herein provided without representation or warranty.

Amerige Heights Town Center Fullerton, CA	1.00 Mile Radius	3.00 Mile Radius	5.00 Mile Radius
---	------------------	------------------	------------------

Population by Age Range



Household Income by Income Range



	1.00 Mile Radius	3.00 Mile Radius	5.00 Mile Radius
Population			
Current Estimated Population	21,186	207,072	615,187
2010 Census Population	21,433	205,037	608,077
2000 Census Population	16,450	194,788	586,746
Historical Annual Growth 2000 to 2010	2.68%	0.51%	0.36%
Estimated Annual Growth 2010 to 2011	-0.66%	0.57%	0.67%
Projected Annual Growth 2011 to 2016	0.12%	0.46%	0.79%
Households			
Current Estimated Households	6,655	63,514	185,550
2010 Census Households	6,721	62,767	183,256
2000 Census Households	5,387	60,747	180,671
Historical Annual Growth 2000 to 2010	2.2%	0.3%	0.1%
Estimated Annual Growth 2010 to 2011	-0.6%	0.7%	0.7%
Projected Annual Growth 2011 to 2016	0.2%	0.5%	0.8%
Population per Household	3.2	3.2	3.3
Ethnicity			
White	37.3%	48.1%	51.9%
Black or African American	1.7%	2.8%	2.7%
Asian & Pacific Islander	47.6%	23.8%	18.7%
Other Races	13.5%	25.4%	26.7%
Hispanic or Latino Population	22.5%	43.9%	47.8%
Non Hispanic or Latino Population	77.5%	56.1%	52.2%

This report was produced using data from private and government sources deemed to be reliable and is herein provided without representation or warranty.