

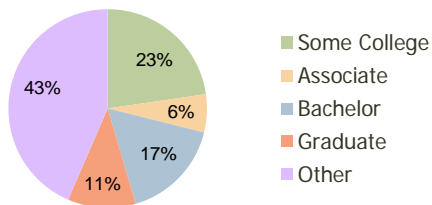
Kings Crossing Sun City, FL	1.00 Mile Radius	3.00 Mile Radius	5.00 Mile Radius
--------------------------------	---------------------	---------------------	---------------------

Current Year Demographics

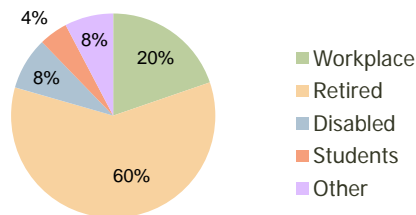
Current Population	3,498	24,931	42,644
Adjusted Total Pop (Carrier Route)	4,199	27,358	44,602
Total Daytime Pop	5,185	23,217	31,279
Workplace Pop	1,080	4,578	6,133
Average Household Income	\$53,439	\$52,398	\$55,580
Median Household Income	\$43,487	\$42,807	\$45,336
Total Housing Units	2,056	12,470	18,445
Median Home Value	\$108,533	\$110,152	\$110,302
Bachelors Degree	18.3%	16.5%	16.4%
Graduate Degree	12.6%	11.1%	9.2%
Total Consumer Spending/Capita	\$0	\$272	\$256

2016 Demographic Projections

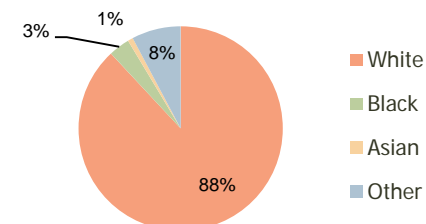
Projected Population	3,978	28,884	50,325
Projected 5 Year Pop Growth	2.6%	3.0%	3.4%
Projected Households	2,318	14,022	21,247
Projected 5 Year Household Growth	2.4%	2.4%	2.9%



Education (3-Mile)



Daytime Population (3-Mile)



Ethnicity (3-Mile)

This report was produced using data from private and government sources deemed to be reliable and is herein provided without representation or warranty.

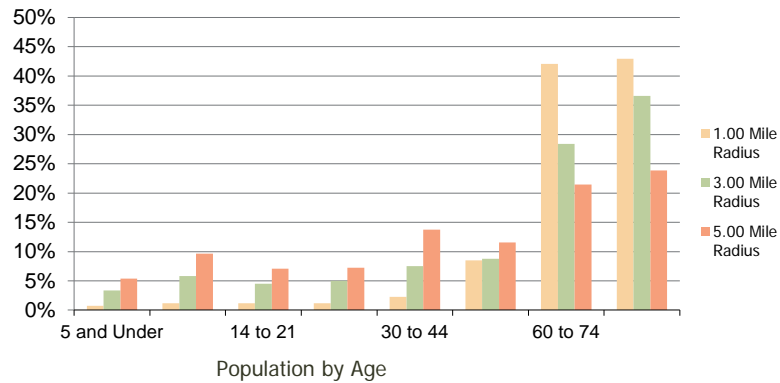
Kings Crossing
Sun City, FL

1.00 Mile
Radius

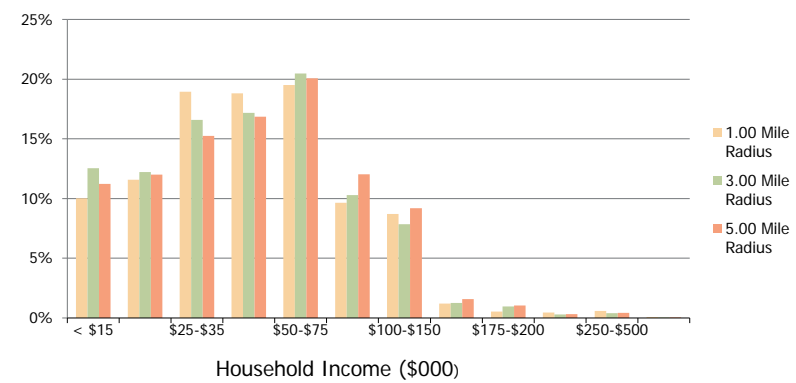
3.00 Mile
Radius

5.00 Mile
Radius

Population by Age Range



Household Income by Income Range



	1.00 Mile Radius	3.00 Mile Radius	5.00 Mile Radius
Population			
Current Estimated Population	3,498	24,931	42,644
2010 Census Population	3,379	24,138	40,800
2000 Census Population	3,349	20,201	27,419
Historical Annual Growth 2000 to 2010	0.09%	1.80%	4.05%
Estimated Annual Growth 2010 to 2011	2.00%	1.86%	2.56%
Projected Annual Growth 2011 to 2016	2.61%	2.99%	3.37%
Households			
Current Estimated Households	2,056	12,470	18,445
2010 Census Households	1,994	12,185	17,805
2000 Census Households	1,807	9,751	12,059
Historical Annual Growth 2000 to 2010	1.0%	2.3%	4.0%
Estimated Annual Growth 2010 to 2011	1.8%	1.3%	2.0%
Projected Annual Growth 2011 to 2016	2.4%	2.4%	2.9%
Population per Household	1.7	2.0	2.3
Ethnicity			
White	95.8%	88.1%	80.6%
Black or African American	1.6%	3.3%	7.2%
Asian & Pacific Islander	0.8%	0.8%	1.5%
Other Races	1.8%	7.8%	10.8%
Hispanic or Latino Population	5.7%	22.9%	28.0%
Non Hispanic or Latino Population	94.3%	77.1%	72.0%

This report was produced using data from private and government sources deemed to be reliable and is herein provided without representation or warranty.