

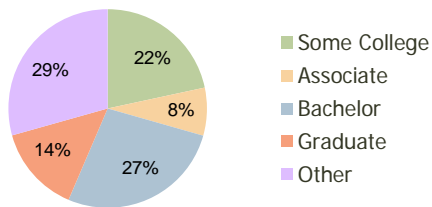
Shiloh Springs Garland, TX	1.00 Mile Radius	3.00 Mile Radius	5.00 Mile Radius
-------------------------------	---------------------	---------------------	---------------------

### Current Year Demographics

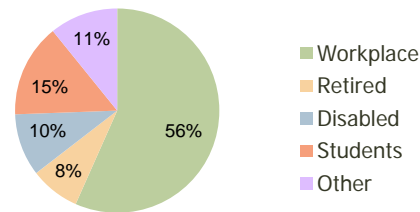
Current Population	8,234	84,809	279,433
Adjusted Total Pop (Carrier Route)	8,932	95,083	301,027
Total Daytime Pop	5,053	92,800	287,475
Workplace Pop	1,901	52,578	148,164
Average Household Income	\$110,698	\$91,137	\$81,339
Median Household Income	\$88,070	\$71,854	\$64,596
Total Housing Units	3,239	31,034	97,879
Median Home Value	\$172,016	\$149,353	\$141,242
Bachelors Degree	32.0%	27.0%	23.9%
Graduate Degree	19.8%	14.2%	12.4%
Total Consumer Spending/Capita	\$312	\$294	\$279

### 2016 Demographic Projections

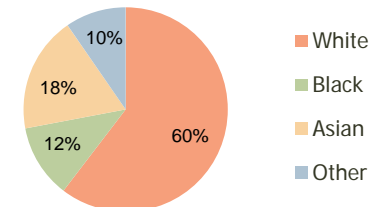
Projected Population	8,785	91,341	304,818
Projected 5 Year Pop Growth	1.3%	1.5%	1.8%
Projected Households	3,457	33,341	106,314
Projected 5 Year Household Growth	1.3%	1.4%	1.7%



Education (3-Mile)



Daytime Population (3-Mile)

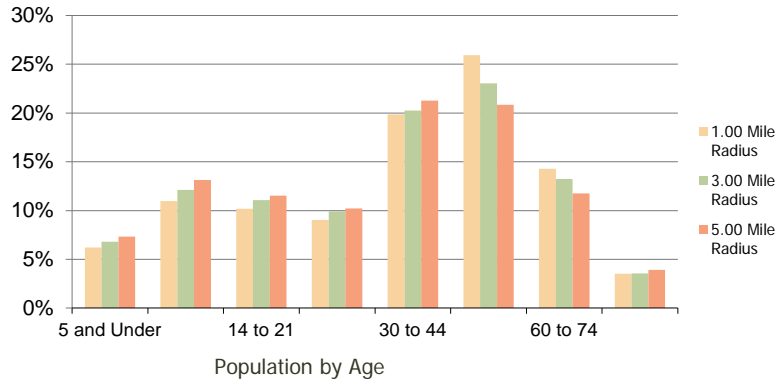


Ethnicity (3-Mile)

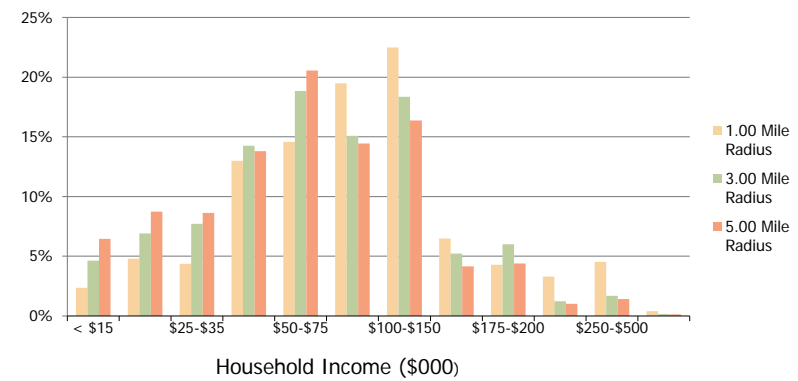
This report was produced using data from private and government sources deemed to be reliable and is herein provided without representation or warranty.

<b>Shiloh Springs</b> Garland, TX	1.00 Mile Radius	3.00 Mile Radius	5.00 Mile Radius
--------------------------------------	---------------------	---------------------	---------------------

**Population by Age Range**



**Household Income by Income Range**



	1.00 Mile Radius	3.00 Mile Radius	5.00 Mile Radius
<b>Population</b>			
Current Estimated Population	8,234	84,809	279,433
2010 Census Population	8,088	83,734	273,502
2000 Census Population	7,141	71,588	237,055
Historical Annual Growth 2000 to 2010	1.25%	1.58%	1.44%
Estimated Annual Growth 2010 to 2011	1.03%	0.73%	1.23%
Projected Annual Growth 2011 to 2016	1.30%	1.49%	1.75%
<b>Households</b>			
Current Estimated Households	3,239	31,034	97,879
2010 Census Households	3,184	30,642	95,944
2000 Census Households	2,581	25,430	83,950
Historical Annual Growth 2000 to 2010	2.1%	1.9%	1.3%
Estimated Annual Growth 2010 to 2011	1.0%	0.7%	1.1%
Projected Annual Growth 2011 to 2016	1.3%	1.4%	1.7%
Population per Household	2.5	2.7	2.8
<b>Ethnicity</b>			
White	66.4%	60.4%	60.6%
Black or African American	9.9%	11.6%	11.4%
Asian & Pacific Islander	17.1%	18.4%	14.6%
Other Races	6.6%	9.6%	13.4%
Hispanic or Latino Population	11.9%	17.3%	25.0%
Non Hispanic or Latino Population	88.1%	82.7%	75.0%

This report was produced using data from private and government sources deemed to be reliable and is herein provided without representation or warranty.