

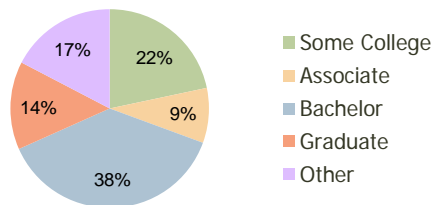
Stroh Ranch Center Parker, CO	1.00 Mile Radius	3.00 Mile Radius	5.00 Mile Radius
----------------------------------	---------------------	---------------------	---------------------

Current Year Demographics

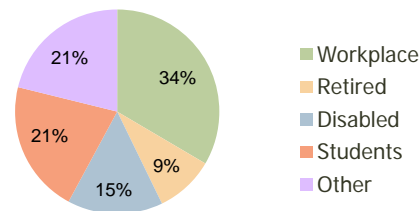
Current Population	4,676	34,920	70,262
Adjusted Total Pop (Carrier Route)	4,931	36,587	71,873
Total Daytime Pop	1,730	22,270	47,694
Workplace Pop	433	7,452	14,554
Average Household Income	\$86,684	\$108,913	\$114,857
Median Household Income	\$77,696	\$93,529	\$98,021
Total Housing Units	1,788	11,963	24,069
Median Home Value	\$238,020	\$290,041	\$298,701
Bachelors Degree	33.2%	37.7%	36.8%
Graduate Degree	12.2%	14.3%	15.6%
Total Consumer Spending/Capita	\$295	\$308	\$312

2016 Demographic Projections

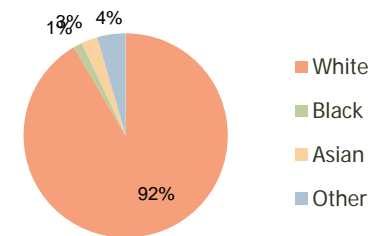
Projected Population	5,686	42,698	87,143
Projected 5 Year Pop Growth	4.0%	4.1%	4.4%
Projected Households	2,175	14,581	29,807
Projected 5 Year Household Growth	4.0%	4.0%	4.4%



Education (3-Mile)



Daytime Population (3-Mile)



Ethnicity (3-Mile)

This report was produced using data from private and government sources deemed to be reliable and is herein provided without representation or warranty.

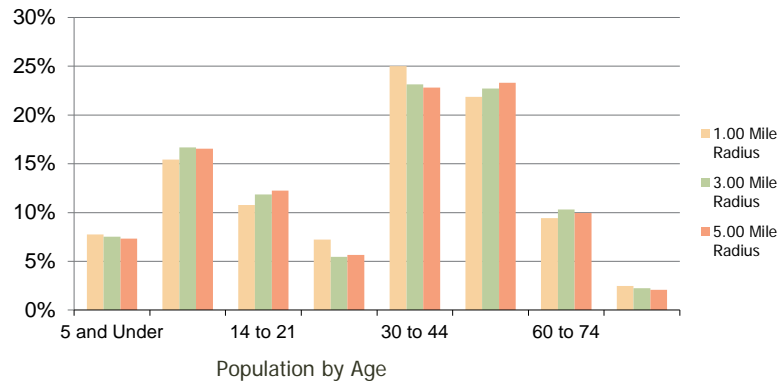
Stroh Ranch Center
Parker, CO

1.00 Mile
Radius

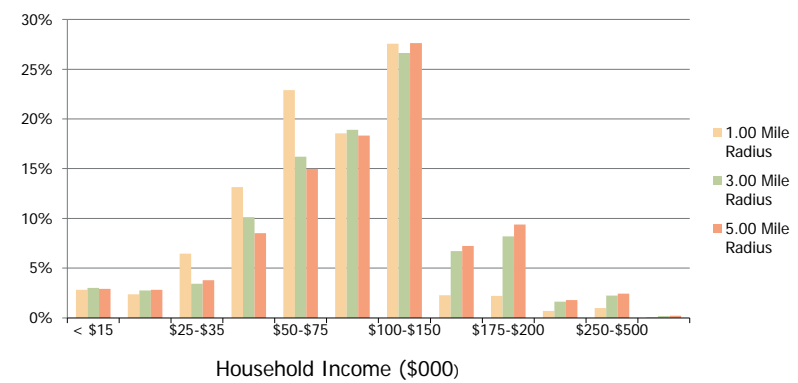
3.00 Mile
Radius

5.00 Mile
Radius

Population by Age Range



Household Income by Income Range



	1.00 Mile Radius	3.00 Mile Radius	5.00 Mile Radius	
Population	Current Estimated Population	4,676	34,920	70,262
	2010 Census Population	4,543	33,439	66,884
	2000 Census Population	3,033	19,899	40,380
	Historical Annual Growth 2000 to 2010	4.12%	5.33%	5.18%
	Estimated Annual Growth 2010 to 2011	1.66%	2.51%	2.86%
	Projected Annual Growth 2011 to 2016	3.99%	4.10%	4.40%
Households	Current Estimated Households	1,788	11,963	24,069
	2010 Census Households	1,738	11,480	22,940
	2000 Census Households	1,080	6,784	13,306
	Historical Annual Growth 2000 to 2010	4.9%	5.4%	5.6%
	Estimated Annual Growth 2010 to 2011	1.6%	2.4%	2.8%
	Projected Annual Growth 2011 to 2016	4.0%	4.0%	4.4%
Population per Household	2.6	2.9	2.9	
Ethnicity	White	92.2%	91.6%	91.3%
	Black or African American	1.1%	1.4%	1.3%
	Asian & Pacific Islander	1.6%	2.6%	2.9%
	Other Races	5.0%	4.5%	4.5%
	Hispanic or Latino Population	7.1%	6.7%	7.1%
Non Hispanic or Latino Population	92.9%	93.3%	92.9%	

This report was produced using data from private and government sources deemed to be reliable and is herein provided without representation or warranty.