

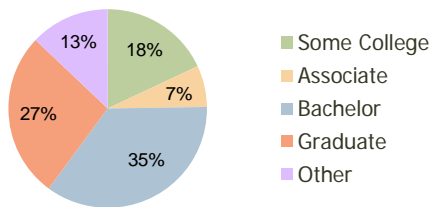
Jackson Creek Crossing Colorado Springs, CO	1.00 Mile Radius	3.00 Mile Radius	5.00 Mile Radius
--	---------------------	---------------------	---------------------

### Current Year Demographics

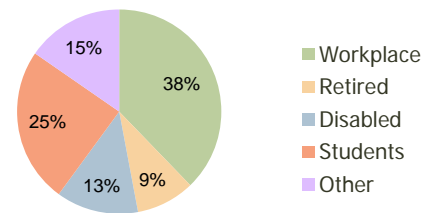
Current Population	3,938	21,629	45,150
Adjusted Total Pop (Carrier Route)	3,940	21,149	46,810
Total Daytime Pop	3,523	20,946	46,201
Workplace Pop	1,211	7,913	18,690
Average Household Income	\$126,420	\$118,005	\$118,175
Median Household Income	\$111,461	\$104,461	\$101,951
Total Housing Units	1,258	7,379	13,991
Median Home Value	\$310,755	\$303,399	\$323,764
Bachelors Degree	40.4%	35.4%	35.1%
Graduate Degree	30.0%	27.0%	26.8%
Total Consumer Spending/Capita	\$292	\$292	\$296

### 2016 Demographic Projections

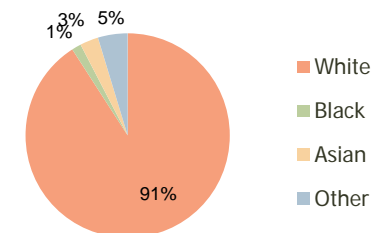
Projected Population	4,490	24,716	50,559
Projected 5 Year Pop Growth	2.7%	2.7%	2.3%
Projected Households	1,433	8,439	15,898
Projected 5 Year Household Growth	2.6%	2.7%	2.6%



Education (3-Mile)



Daytime Population (3-Mile)

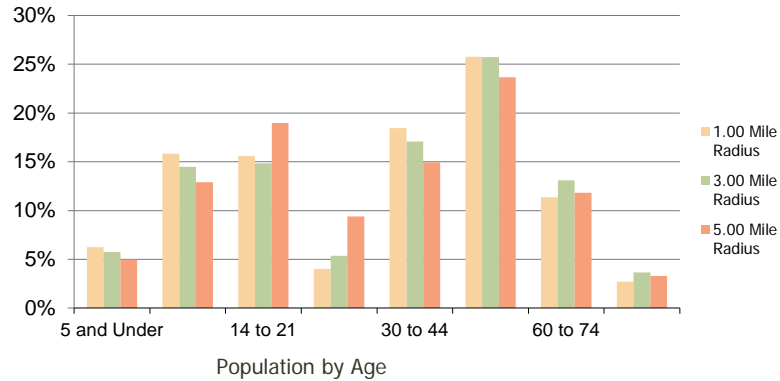


Ethnicity (3-Mile)

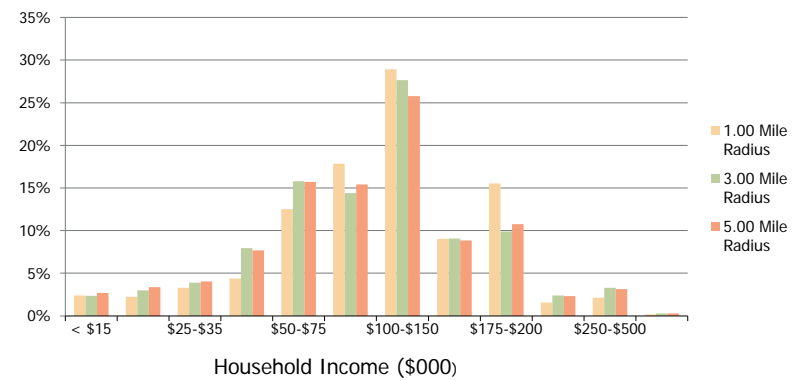
This report was produced using data from private and government sources deemed to be reliable and is herein provided without representation or warranty.

<b>Jackson Creek Crossing</b> Colorado Springs, CO	1.00 Mile Radius	3.00 Mile Radius	5.00 Mile Radius
---	------------------	------------------	------------------

**Population by Age Range**



**Household Income by Income Range**



	1.00 Mile Radius	3.00 Mile Radius	5.00 Mile Radius
<b>Population</b>			
Current Estimated Population	3,938	21,629	45,150
2010 Census Population	3,813	20,859	43,675
2000 Census Population	1,438	11,801	25,751
Historical Annual Growth 2000 to 2010	10.24%	5.86%	5.42%
Estimated Annual Growth 2010 to 2011	1.87%	2.09%	1.92%
Projected Annual Growth 2011 to 2016	2.66%	2.70%	2.29%
<b>Households</b>			
Current Estimated Households	1,258	7,379	13,991
2010 Census Households	1,219	7,113	13,517
2000 Census Households	483	4,000	8,076
Historical Annual Growth 2000 to 2010	9.7%	5.9%	5.3%
Estimated Annual Growth 2010 to 2011	1.8%	2.1%	2.0%
Projected Annual Growth 2011 to 2016	2.6%	2.7%	2.6%
Population per Household	3.1	2.9	2.9
<b>Ethnicity</b>			
White	90.6%	90.9%	89.7%
Black or African American	1.5%	1.5%	1.9%
Asian & Pacific Islander	2.7%	2.9%	3.2%
Other Races	5.2%	4.7%	5.3%
Hispanic or Latino Population	6.1%	6.1%	6.4%
Non Hispanic or Latino Population	93.9%	93.9%	93.6%

This report was produced using data from private and government sources deemed to be reliable and is herein provided without representation or warranty.