

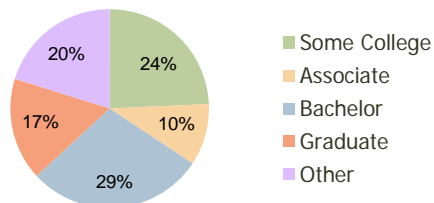
Woodmen Plaza Colorado Springs, CO	1.00 Mile Radius	3.00 Mile Radius	5.00 Mile Radius
---------------------------------------	---------------------	---------------------	---------------------

Current Year Demographics

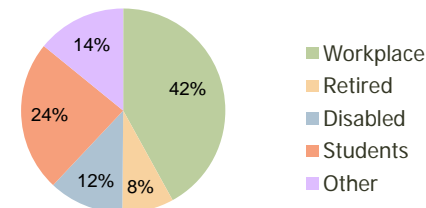
Current Population	14,554	100,802	192,812
Adjusted Total Pop (Carrier Route)	15,241	104,344	193,725
Total Daytime Pop	9,726	88,040	176,034
Workplace Pop	3,451	36,941	70,553
Average Household Income	\$77,349	\$85,696	\$80,473
Median Household Income	\$67,283	\$72,372	\$66,887
Total Housing Units	5,480	37,341	73,153
Median Home Value	\$188,567	\$205,510	\$197,886
Bachelors Degree	29.8%	28.8%	26.9%
Graduate Degree	13.0%	16.7%	15.6%
Total Consumer Spending/Capita	\$276	\$272	\$270

2016 Demographic Projections

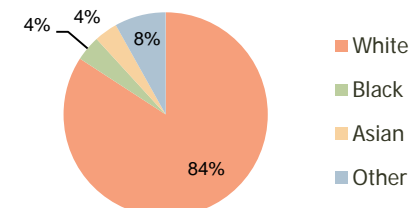
Projected Population	15,465	110,246	209,212
Projected 5 Year Pop Growth	1.2%	1.8%	1.6%
Projected Households	5,838	40,808	79,323
Projected 5 Year Household Growth	1.3%	1.8%	1.6%



Education (3-Mile)



Daytime Population (3-Mile)

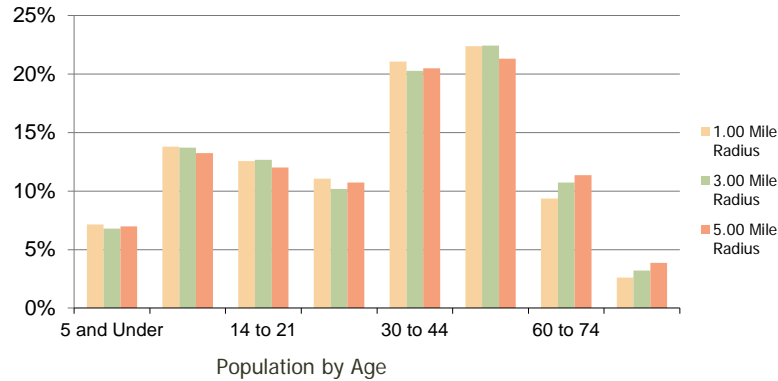


Ethnicity (3-Mile)

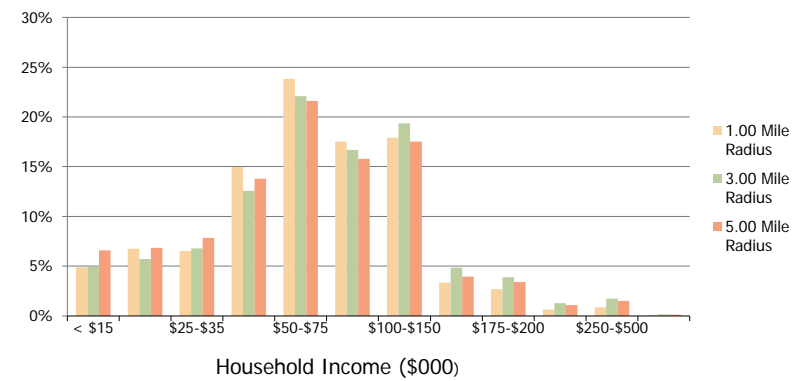
This report was produced using data from private and government sources deemed to be reliable and is herein provided without representation or warranty.

Woodmen Plaza Colorado Springs, CO	1.00 Mile Radius	3.00 Mile Radius	5.00 Mile Radius
---------------------------------------	---------------------	---------------------	---------------------

Population by Age Range



Household Income by Income Range



	1.00 Mile Radius	3.00 Mile Radius	5.00 Mile Radius
Population			
Current Estimated Population	14,554	100,802	192,812
2010 Census Population	14,337	98,327	188,766
2000 Census Population	13,195	77,852	142,893
Historical Annual Growth 2000 to 2010	0.83%	2.36%	2.82%
Estimated Annual Growth 2010 to 2011	0.86%	1.43%	1.22%
Projected Annual Growth 2011 to 2016	1.22%	1.81%	1.65%
Households			
Current Estimated Households	5,480	37,341	73,153
2010 Census Households	5,386	36,421	71,664
2000 Census Households	4,610	27,469	52,602
Historical Annual Growth 2000 to 2010	1.6%	2.9%	3.1%
Estimated Annual Growth 2010 to 2011	1.0%	1.4%	1.2%
Projected Annual Growth 2011 to 2016	1.3%	1.8%	1.6%
Population per Household	2.7	2.7	2.6
Ethnicity			
White	85.1%	84.2%	83.1%
Black or African American	3.3%	4.0%	4.4%
Asian & Pacific Islander	3.4%	3.7%	3.5%
Other Races	8.2%	8.1%	8.9%
Hispanic or Latino Population	10.3%	10.5%	11.6%
Non Hispanic or Latino Population	89.7%	89.5%	88.4%

This report was produced using data from private and government sources deemed to be reliable and is herein provided without representation or warranty.