

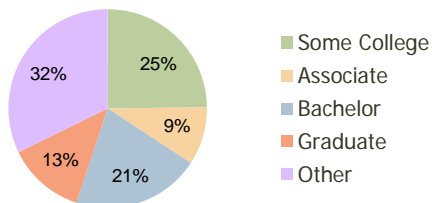
Fenton Village Marketplace Fenton, MI	1.00 Mile Radius	3.00 Mile Radius	5.00 Mile Radius
--	---------------------	---------------------	---------------------

Current Year Demographics

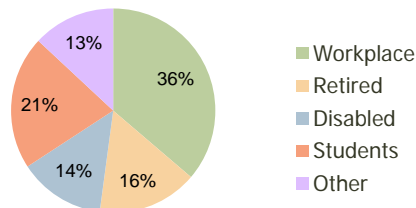
Current Population	3,994	28,995	43,896
Adjusted Total Pop (Carrier Route)	4,189	29,419	46,376
Total Daytime Pop	4,396	22,634	33,626
Workplace Pop	2,252	8,203	10,143
Average Household Income	\$60,931	\$77,749	\$77,772
Median Household Income	\$47,732	\$62,619	\$64,295
Total Housing Units	1,781	11,621	17,145
Median Home Value	\$89,519	\$111,099	\$117,346
Bachelors Degree	17.5%	20.9%	20.6%
Graduate Degree	13.1%	12.6%	11.5%
Total Consumer Spending/Capita	\$260	\$272	\$275

2016 Demographic Projections

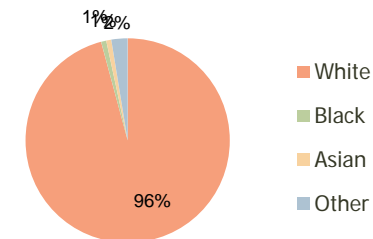
Projected Population	4,014	29,170	44,229
Projected 5 Year Pop Growth	0.1%	0.1%	0.2%
Projected Households	1,793	11,691	17,273
Projected 5 Year Household Growth	0.1%	0.1%	0.1%



Education (3-Mile)



Daytime Population (3-Mile)



Ethnicity (3-Mile)

This report was produced using data from private and government sources deemed to be reliable and is herein provided without representation or warranty.

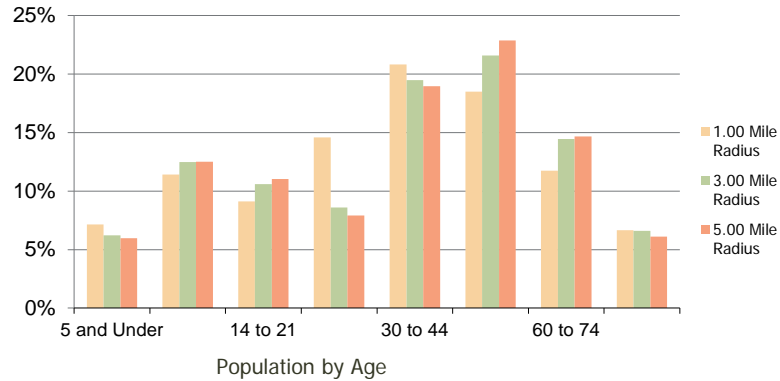
Fenton Village Marketplace Fenton, MI

1.00 Mile
Radius

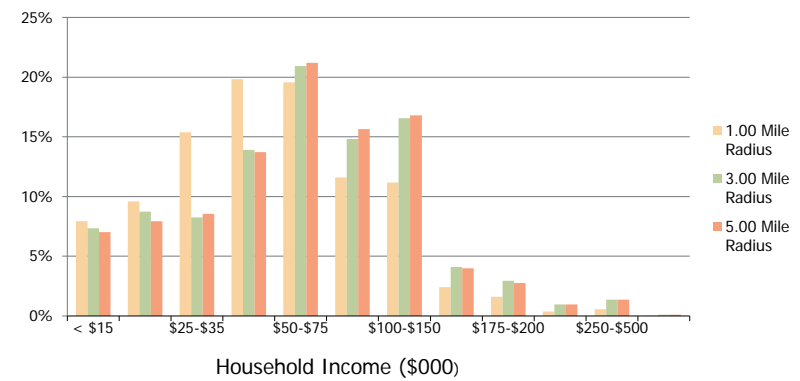
3.00 Mile
Radius

5.00 Mile
Radius

Population by Age Range



Household Income by Income Range



	1.00 Mile Radius	3.00 Mile Radius	5.00 Mile Radius
Population			
Current Estimated Population	3,994	28,995	43,896
2010 Census Population	3,987	28,939	43,711
2000 Census Population	3,573	24,467	37,064
Historical Annual Growth 2000 to 2010	1.10%	1.69%	1.66%
Estimated Annual Growth 2010 to 2011	0.10%	0.11%	0.24%
Projected Annual Growth 2011 to 2016	0.10%	0.12%	0.15%
Households			
Current Estimated Households	1,781	11,621	17,145
2010 Census Households	1,775	11,594	17,067
2000 Census Households	1,424	9,586	14,213
Historical Annual Growth 2000 to 2010	2.2%	1.9%	1.8%
Estimated Annual Growth 2010 to 2011	0.2%	0.1%	0.3%
Projected Annual Growth 2011 to 2016	0.1%	0.1%	0.1%
Population per Household	2.2	2.5	2.5
Ethnicity			
White	94.0%	95.8%	95.9%
Black or African American	2.0%	0.8%	0.8%
Asian & Pacific Islander	0.8%	0.8%	0.8%
Other Races	3.2%	2.6%	2.5%
Hispanic or Latino Population	2.9%	2.3%	2.3%
Non Hispanic or Latino Population	97.1%	97.7%	97.7%

This report was produced using data from private and government sources deemed to be reliable and is herein provided without representation or warranty.