

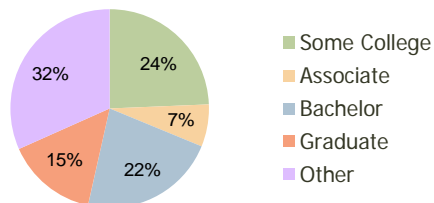
Cheshire Station Dale City, VA	1.00 Mile Radius	3.00 Mile Radius	5.00 Mile Radius
-----------------------------------	---------------------	---------------------	---------------------

Current Year Demographics

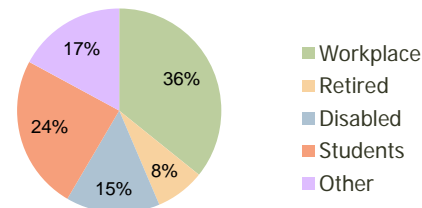
Current Population	16,583	107,087	221,033
Adjusted Total Pop (Carrier Route)	15,984	109,748	231,700
Total Daytime Pop	9,412	73,610	151,138
Workplace Pop	2,754	26,333	48,809
Average Household Income	\$83,941	\$105,629	\$101,720
Median Household Income	\$72,945	\$92,606	\$87,060
Total Housing Units	5,390	33,982	72,622
Median Home Value	\$228,400	\$271,371	\$265,926
Bachelors Degree	15.9%	22.3%	21.2%
Graduate Degree	7.8%	14.8%	14.4%
Total Consumer Spending/Capita	\$302	\$301	\$303

2016 Demographic Projections

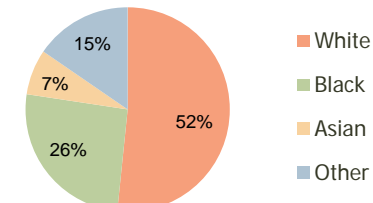
Projected Population	19,908	122,875	264,508
Projected 5 Year Pop Growth	3.7%	2.8%	3.7%
Projected Households	6,555	39,034	86,887
Projected 5 Year Household Growth	4.0%	2.8%	3.7%



Education (3-Mile)



Daytime Population (3-Mile)

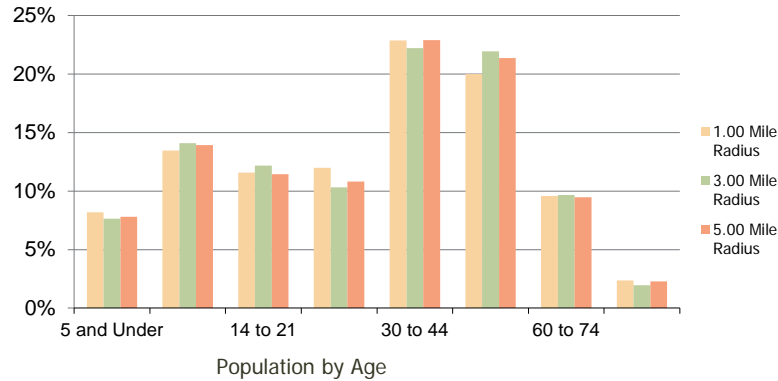


Ethnicity (3-Mile)

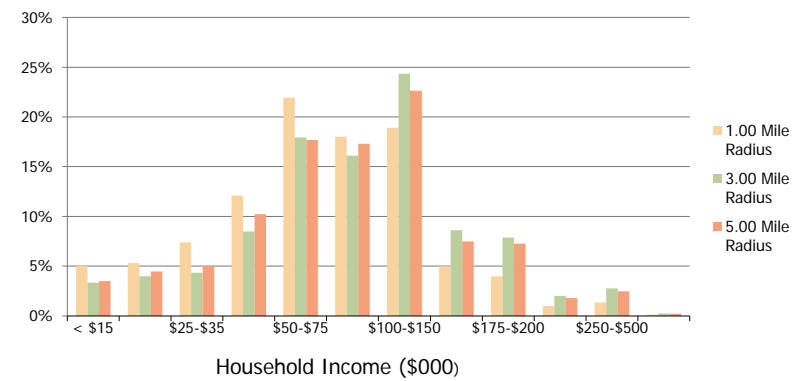
This report was produced using data from private and government sources deemed to be reliable and is herein provided without representation or warranty.

Cheshire Station Dale City, VA	1.00 Mile Radius	3.00 Mile Radius	5.00 Mile Radius
--	------------------	------------------	------------------

Population by Age Range



Household Income by Income Range



	1.00 Mile Radius	3.00 Mile Radius	5.00 Mile Radius
Population			
Current Estimated Population	16,583	107,087	221,033
2010 Census Population	15,605	103,537	211,129
2000 Census Population	14,482	87,337	169,026
Historical Annual Growth 2000 to 2010	0.75%	1.72%	2.25%
Estimated Annual Growth 2010 to 2011	3.54%	1.94%	2.65%
Projected Annual Growth 2011 to 2016	3.72%	2.79%	3.66%
Households			
Current Estimated Households	5,390	33,982	72,622
2010 Census Households	5,002	32,801	69,353
2000 Census Households	4,885	27,983	56,692
Historical Annual Growth 2000 to 2010	0.2%	1.6%	2.0%
Estimated Annual Growth 2010 to 2011	4.4%	2.0%	2.7%
Projected Annual Growth 2011 to 2016	4.0%	2.8%	3.7%
Population per Household	3.1	3.1	3.0
Ethnicity			
White	45.2%	51.6%	51.0%
Black or African American	28.4%	25.8%	25.8%
Asian & Pacific Islander	6.3%	7.2%	7.2%
Other Races	20.1%	15.4%	16.0%
Hispanic or Latino Population	30.4%	21.8%	22.6%
Non Hispanic or Latino Population	69.6%	78.2%	77.4%

This report was produced using data from private and government sources deemed to be reliable and is herein provided without representation or warranty.