

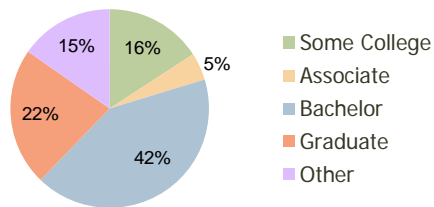
Ashford Place Dunwoody, GA	1.00 Mile Radius	3.00 Mile Radius	5.00 Mile Radius
-------------------------------	---------------------	---------------------	---------------------

Current Year Demographics

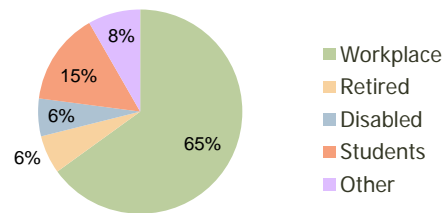
Current Population	14,979	97,711	216,520
Adjusted Total Pop (Carrier Route)	19,021	98,586	236,512
Total Daytime Pop	37,190	167,031	300,129
Workplace Pop	27,879	108,641	189,815
Average Household Income	\$105,716	\$104,993	\$109,581
Median Household Income	\$80,777	\$76,558	\$73,353
Total Housing Units	7,219	45,703	92,665
Median Home Value	\$297,645	\$274,550	\$283,093
Bachelors Degree	48.9%	41.9%	37.5%
Graduate Degree	24.2%	22.4%	20.9%
Total Consumer Spending/Capita	\$327	\$308	\$304

2016 Demographic Projections

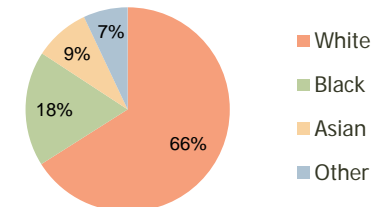
Projected Population	17,159	106,336	234,020
Projected 5 Year Pop Growth	2.8%	1.7%	1.6%
Projected Households	8,416	50,160	100,648
Projected 5 Year Household Growth	3.1%	1.9%	1.7%



Education (3-Mile)



Daytime Population (3-Mile)



Ethnicity (3-Mile)

This report was produced using data from private and government sources deemed to be reliable and is herein provided without representation or warranty.

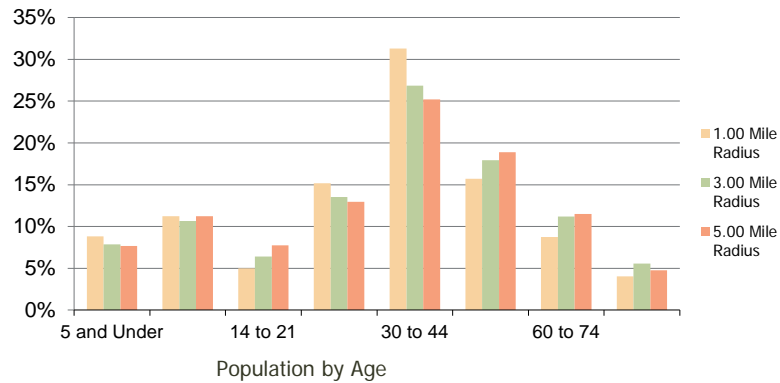
Ashford Place
Dunwoody, GA

1.00 Mile
Radius

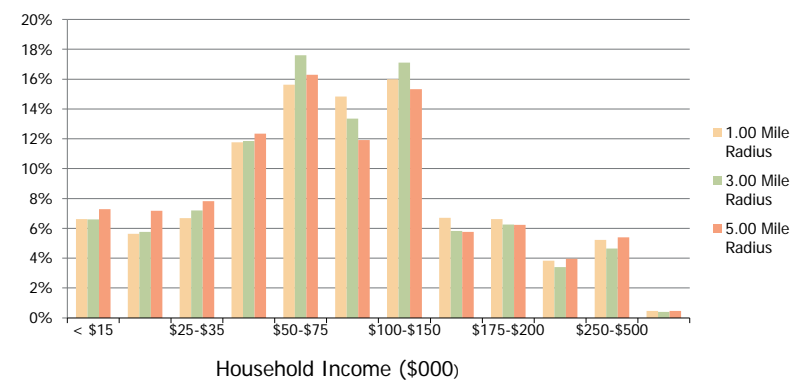
3.00 Mile
Radius

5.00 Mile
Radius

Population by Age Range



Household Income by Income Range



	1.00 Mile Radius	3.00 Mile Radius	5.00 Mile Radius
Population			
Current Estimated Population	14,979	97,711	216,520
2010 Census Population	14,794	96,063	212,930
2000 Census Population	9,645	81,795	195,914
Historical Annual Growth 2000 to 2010	4.37%	1.62%	0.84%
Estimated Annual Growth 2010 to 2011	0.71%	0.98%	0.96%
Projected Annual Growth 2011 to 2016	2.76%	1.71%	1.57%
Households			
Current Estimated Households	7,219	45,703	92,665
2010 Census Households	7,061	44,779	90,950
2000 Census Households	4,590	37,246	83,233
Historical Annual Growth 2000 to 2010	4.4%	1.9%	0.9%
Estimated Annual Growth 2010 to 2011	1.3%	1.2%	1.1%
Projected Annual Growth 2011 to 2016	3.1%	1.9%	1.7%
Population per Household	2.1	2.1	2.3
Ethnicity			
White	63.1%	66.0%	66.1%
Black or African American	13.4%	18.2%	15.7%
Asian & Pacific Islander	19.4%	8.8%	7.3%
Other Races	4.2%	7.0%	10.9%
Hispanic or Latino Population	5.4%	9.7%	16.6%
Non Hispanic or Latino Population	94.6%	90.3%	83.4%

This report was produced using data from private and government sources deemed to be reliable and is herein provided without representation or warranty.