

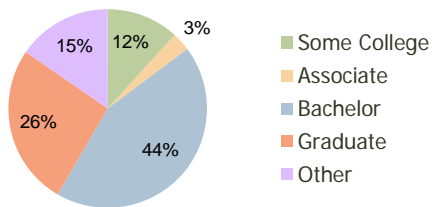
Buckhead Court Atlanta, GA	1.00 Mile Radius	3.00 Mile Radius	5.00 Mile Radius
-------------------------------	---------------------	---------------------	---------------------

Current Year Demographics

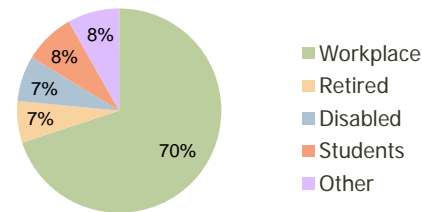
Current Population	8,444	91,304	246,305
Adjusted Total Pop (Carrier Route)	8,981	100,006	263,400
Total Daytime Pop	14,465	149,166	408,140
Workplace Pop	10,604	104,284	288,535
Average Household Income	\$135,243	\$135,348	\$119,170
Median Household Income	\$85,944	\$86,459	\$75,586
Total Housing Units	4,380	45,634	117,858
Median Home Value	\$335,425	\$378,143	\$306,991
Bachelors Degree	48.6%	43.6%	39.4%
Graduate Degree	29.5%	26.2%	25.5%
Total Consumer Spending/Capita	\$317	\$295	\$288

2016 Demographic Projections

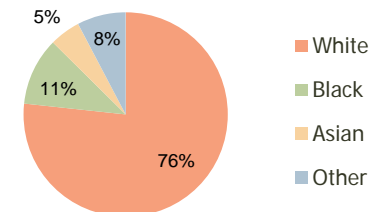
Projected Population	8,928	104,181	277,360
Projected 5 Year Pop Growth	1.1%	2.7%	2.4%
Projected Households	4,650	52,343	133,703
Projected 5 Year Household Growth	1.2%	2.8%	2.6%



Education (3-Mile)



Daytime Population (3-Mile)

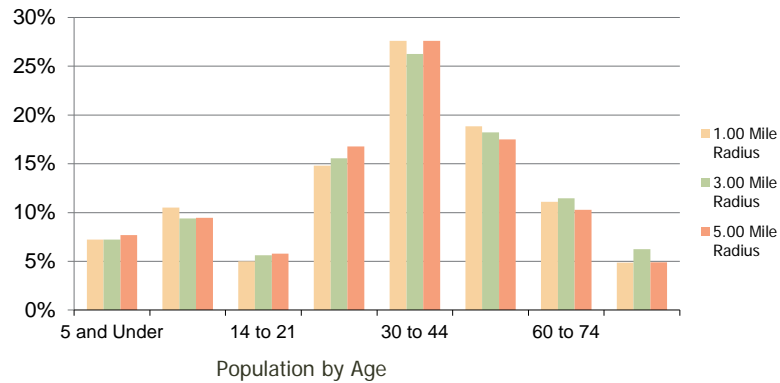


Ethnicity (3-Mile)

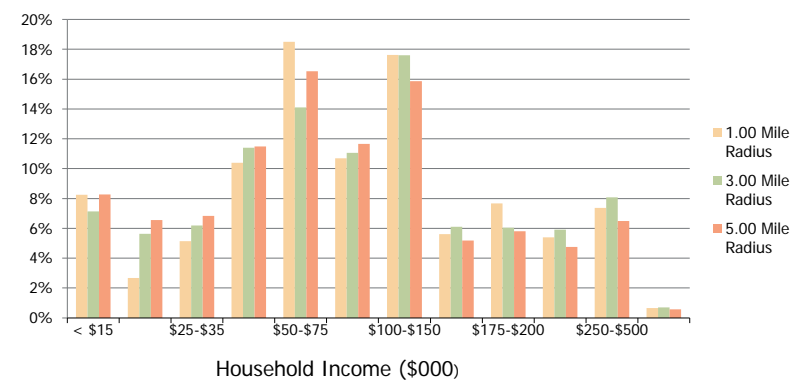
This report was produced using data from private and government sources deemed to be reliable and is herein provided without representation or warranty.

Buckhead Court Atlanta, GA	1.00 Mile Radius	3.00 Mile Radius	5.00 Mile Radius
--------------------------------------	------------------	------------------	------------------

Population by Age Range



Household Income by Income Range



	1.00 Mile Radius	3.00 Mile Radius	5.00 Mile Radius
Population			
Current Estimated Population	8,444	91,304	246,305
2010 Census Population	8,222	87,266	239,199
2000 Census Population	7,087	76,833	215,462
Historical Annual Growth 2000 to 2010	1.50%	1.28%	1.05%
Estimated Annual Growth 2010 to 2011	1.54%	2.62%	1.69%
Projected Annual Growth 2011 to 2016	1.12%	2.67%	2.40%
Households			
Current Estimated Households	4,380	45,634	117,858
2010 Census Households	4,251	43,444	113,896
2000 Census Households	3,946	37,518	101,121
Historical Annual Growth 2000 to 2010	0.7%	1.5%	1.2%
Estimated Annual Growth 2010 to 2011	1.7%	2.8%	2.0%
Projected Annual Growth 2011 to 2016	1.2%	2.8%	2.6%
Population per Household	1.9	2.0	2.1
Ethnicity			
White	83.2%	76.7%	70.3%
Black or African American	8.1%	10.7%	13.0%
Asian & Pacific Islander	4.0%	4.9%	5.6%
Other Races	4.7%	7.7%	11.2%
Hispanic or Latino Population	6.2%	11.3%	16.3%
Non Hispanic or Latino Population	93.8%	88.7%	83.7%

This report was produced using data from private and government sources deemed to be reliable and is herein provided without representation or warranty.