

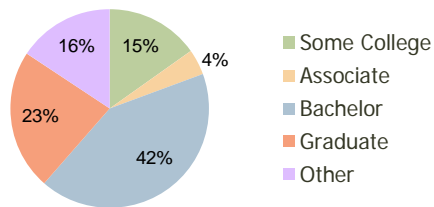
Cornerstone Square Sandy Springs, GA	1.00 Mile Radius	3.00 Mile Radius	5.00 Mile Radius
---	---------------------	---------------------	---------------------

Current Year Demographics

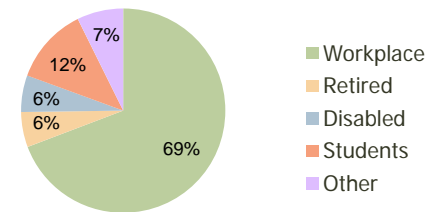
Current Population	7,460	80,115	197,323
Adjusted Total Pop (Carrier Route)	7,243	83,068	200,541
Total Daytime Pop	22,633	147,766	290,759
Workplace Pop	18,387	102,288	182,731
Average Household Income	\$108,969	\$119,132	\$122,491
Median Household Income	\$81,621	\$81,262	\$82,967
Total Housing Units	3,665	36,470	87,488
Median Home Value	\$258,812	\$304,376	\$299,925
Bachelors Degree	37.8%	42.1%	41.6%
Graduate Degree	20.9%	22.9%	24.1%
Total Consumer Spending/Capita	\$296	\$308	\$311

2016 Demographic Projections

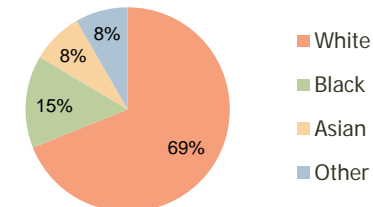
Projected Population	8,762	90,852	215,304
Projected 5 Year Pop Growth	3.3%	2.5%	1.8%
Projected Households	4,319	41,612	95,864
Projected 5 Year Household Growth	3.3%	2.7%	1.8%



Education (3-Mile)



Daytime Population (3-Mile)



Ethnicity (3-Mile)

This report was produced using data from private and government sources deemed to be reliable and is herein provided without representation or warranty.

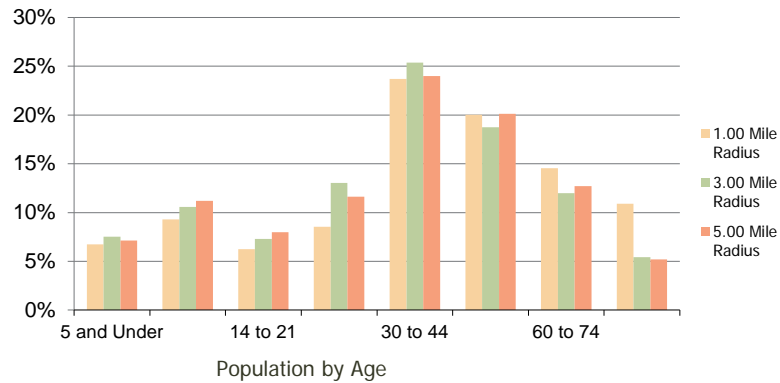
Cornerstone Square
Sandy Springs, GA

1.00 Mile
Radius

3.00 Mile
Radius

5.00 Mile
Radius

Population by Age Range



Household Income by Income Range



	1.00 Mile Radius	3.00 Mile Radius	5.00 Mile Radius	
Population	Current Estimated Population	7,460	80,115	197,323
	2010 Census Population	7,029	77,012	193,323
	2000 Census Population	6,264	66,878	172,943
	Historical Annual Growth 2000 to 2010	1.16%	1.42%	1.12%
	Estimated Annual Growth 2010 to 2011	3.46%	2.28%	1.18%
	Projected Annual Growth 2011 to 2016	3.27%	2.55%	1.76%
Households	Current Estimated Households	3,665	36,470	87,488
	2010 Census Households	3,438	35,000	85,653
	2000 Census Households	3,069	30,029	76,110
	Historical Annual Growth 2000 to 2010	1.1%	1.5%	1.2%
	Estimated Annual Growth 2010 to 2011	3.7%	2.4%	1.2%
	Projected Annual Growth 2011 to 2016	3.3%	2.7%	1.8%
Population per Household	2.0	2.2	2.2	
Ethnicity	White	80.1%	68.9%	71.7%
	Black or African American	9.2%	14.7%	14.3%
	Asian & Pacific Islander	4.5%	8.1%	7.4%
	Other Races	6.2%	8.3%	6.6%
	Hispanic or Latino Population	9.4%	12.5%	9.4%
Non Hispanic or Latino Population	90.6%	87.5%	90.6%	

This report was produced using data from private and government sources deemed to be reliable and is herein provided without representation or warranty.