

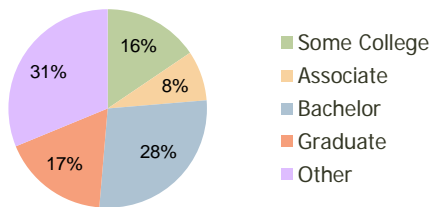
Town Square Center Tampa, FL	1.00 Mile Radius	3.00 Mile Radius	5.00 Mile Radius
---------------------------------	---------------------	---------------------	---------------------

### Current Year Demographics

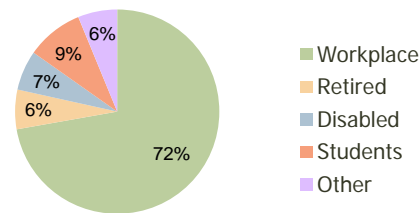
Current Population	9,220	67,821	197,071
Adjusted Total Pop (Carrier Route)	9,272	73,534	210,807
Total Daytime Pop	32,105	138,651	364,821
Workplace Pop	26,447	100,124	210,716
Average Household Income	\$121,014	\$93,868	\$79,528
Median Household Income	\$73,075	\$58,723	\$50,544
Total Housing Units	4,082	30,706	85,395
Median Home Value	\$238,935	\$196,399	\$147,507
Bachelors Degree	32.3%	27.7%	22.8%
Graduate Degree	18.8%	17.4%	13.3%
Total Consumer Spending/Capita	\$286	\$271	\$263

### 2016 Demographic Projections

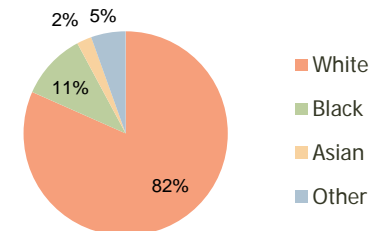
Projected Population	10,567	75,274	219,504
Projected 5 Year Pop Growth	2.8%	2.1%	2.2%
Projected Households	4,707	34,286	96,162
Projected 5 Year Household Growth	2.9%	2.2%	2.4%



Education (3-Mile)



Daytime Population (3-Mile)

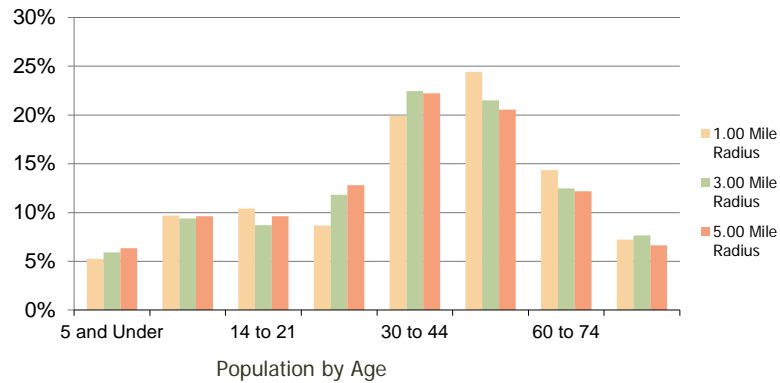


Ethnicity (3-Mile)

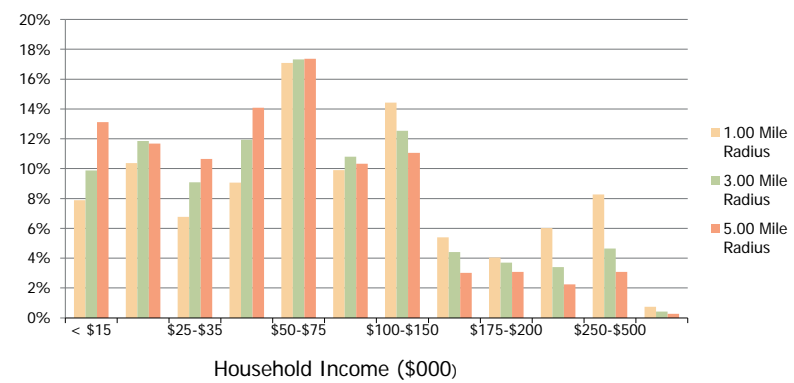
This report was produced using data from private and government sources deemed to be reliable and is herein provided without representation or warranty.

Town Square Center Tampa, FL	1.00 Mile Radius	3.00 Mile Radius	5.00 Mile Radius
---------------------------------	---------------------	---------------------	---------------------

**Population by Age Range**



**Household Income by Income Range**



	1.00 Mile Radius	3.00 Mile Radius	5.00 Mile Radius
<b>Population</b>			
Current Estimated Population	9,220	67,821	197,071
2010 Census Population	8,925	66,332	192,465
2000 Census Population	9,067	65,331	185,224
Historical Annual Growth 2000 to 2010	-0.16%	0.15%	0.38%
Estimated Annual Growth 2010 to 2011	1.88%	1.28%	1.36%
Projected Annual Growth 2011 to 2016	2.77%	2.11%	2.18%
<b>Households</b>			
Current Estimated Households	4,082	30,706	85,395
2010 Census Households	3,947	29,920	83,030
2000 Census Households	3,953	29,855	80,410
Historical Annual Growth 2000 to 2010	0.0%	0.0%	0.3%
Estimated Annual Growth 2010 to 2011	1.9%	1.5%	1.6%
Projected Annual Growth 2011 to 2016	2.9%	2.2%	2.4%
Population per Household	2.3	2.2	2.2
<b>Ethnicity</b>			
White	83.3%	81.6%	76.1%
Black or African American	9.6%	10.5%	13.9%
Asian & Pacific Islander	3.1%	2.4%	2.8%
Other Races	4.0%	5.5%	7.3%
Hispanic or Latino Population	15.5%	24.5%	30.8%
Non Hispanic or Latino Population	84.5%	75.5%	69.2%

This report was produced using data from private and government sources deemed to be reliable and is herein provided without representation or warranty.