

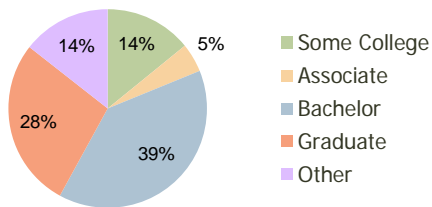
Peartree Village Brentwood, TN	1.00 Mile Radius	3.00 Mile Radius	5.00 Mile Radius
-----------------------------------	---------------------	---------------------	---------------------

### Current Year Demographics

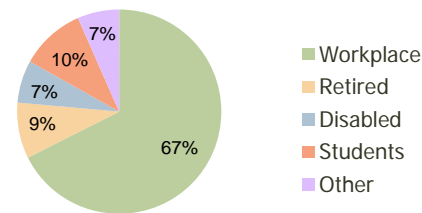
Current Population	4,319	30,882	105,333
Adjusted Total Pop (Carrier Route)	4,992	33,291	113,481
Total Daytime Pop	26,539	47,858	109,381
Workplace Pop	21,989	32,336	61,016
Average Household Income	\$124,334	\$134,288	\$112,080
Median Household Income	\$73,888	\$93,919	\$75,709
Total Housing Units	1,976	12,674	42,321
Median Home Value	\$335,705	\$334,481	\$291,234
Bachelors Degree	35.5%	39.2%	35.8%
Graduate Degree	25.9%	27.6%	21.5%
Total Consumer Spending/Capita	\$313	\$281	\$263

### 2016 Demographic Projections

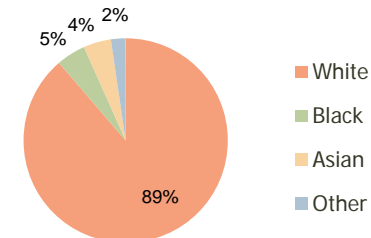
Projected Population	4,947	33,940	115,639
Projected 5 Year Pop Growth	2.8%	1.9%	1.9%
Projected Households	2,246	13,842	46,281
Projected 5 Year Household Growth	2.6%	1.8%	1.8%



Education (3-Mile)



Daytime Population (3-Mile)

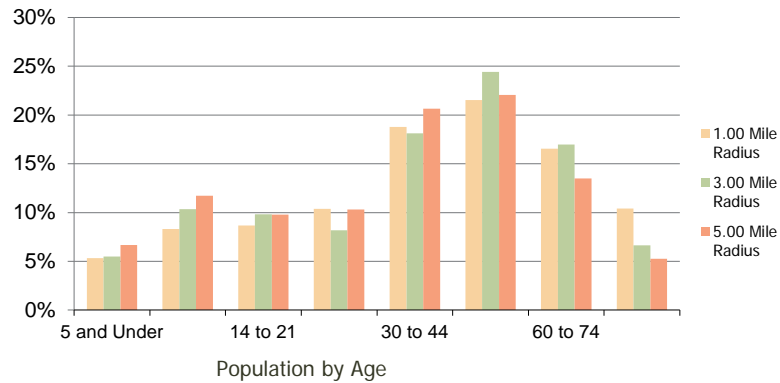


Ethnicity (3-Mile)

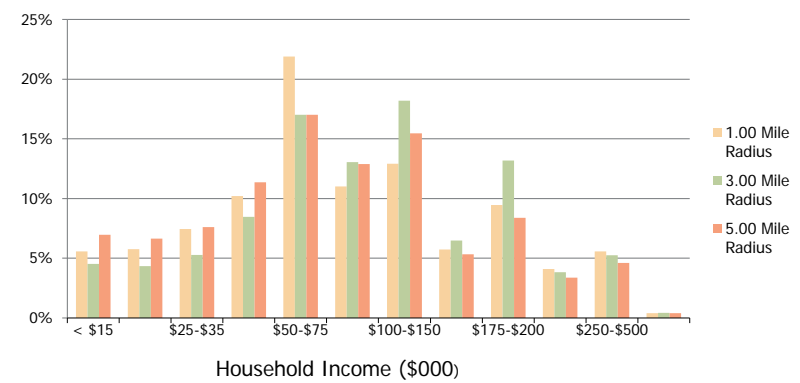
This report was produced using data from private and government sources deemed to be reliable and is herein provided without representation or warranty.

<b>Peartree Village</b> Brentwood, TN	1.00 Mile Radius	3.00 Mile Radius	5.00 Mile Radius
--	------------------	------------------	------------------

**Population by Age Range**



**Household Income by Income Range**



	1.00 Mile Radius	3.00 Mile Radius	5.00 Mile Radius
<b>Population</b>			
Current Estimated Population	4,319	30,882	105,333
2010 Census Population	4,165	30,257	102,820
2000 Census Population	3,630	25,898	85,946
Historical Annual Growth 2000 to 2010	1.39%	1.57%	1.81%
Estimated Annual Growth 2010 to 2011	2.09%	1.18%	1.39%
Projected Annual Growth 2011 to 2016	2.75%	1.91%	1.88%
<b>Households</b>			
Current Estimated Households	1,976	12,674	42,321
2010 Census Households	1,910	12,433	41,320
2000 Census Households	1,651	10,271	35,243
Historical Annual Growth 2000 to 2010	1.5%	1.9%	1.6%
Estimated Annual Growth 2010 to 2011	2.0%	1.1%	1.4%
Projected Annual Growth 2011 to 2016	2.6%	1.8%	1.8%
Population per Household	2.1	2.4	2.5
<b>Ethnicity</b>			
White	91.6%	88.7%	81.3%
Black or African American	3.1%	4.6%	8.1%
Asian & Pacific Islander	3.4%	4.4%	5.1%
Other Races	1.9%	2.3%	5.6%
Hispanic or Latino Population	2.2%	2.4%	7.5%
Non Hispanic or Latino Population	97.8%	97.6%	92.5%

This report was produced using data from private and government sources deemed to be reliable and is herein provided without representation or warranty.