

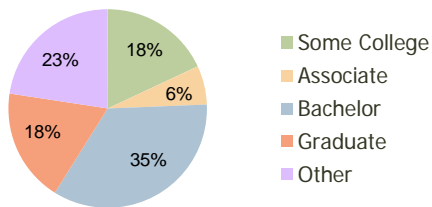
Harpeth Village Franklin, TN	1.00 Mile Radius	3.00 Mile Radius	5.00 Mile Radius
---------------------------------	---------------------	---------------------	---------------------

Current Year Demographics

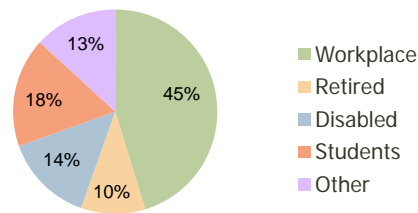
Current Population	6,783	25,231	68,687
Adjusted Total Pop (Carrier Route)	6,890	25,125	71,611
Total Daytime Pop	3,571	21,134	94,049
Workplace Pop	613	9,562	60,838
Average Household Income	\$116,749	\$108,827	\$106,524
Median Household Income	\$96,813	\$81,842	\$80,218
Total Housing Units	2,392	9,213	26,282
Median Home Value	\$267,382	\$279,715	\$283,640
Bachelors Degree	38.7%	34.5%	35.7%
Graduate Degree	23.9%	18.5%	18.9%
Total Consumer Spending/Capita	\$0	\$243	\$248

2016 Demographic Projections

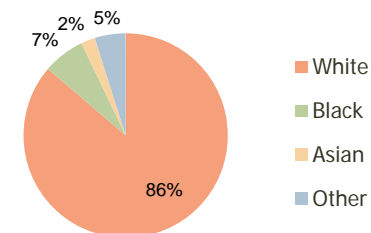
Projected Population	7,626	28,894	80,969
Projected 5 Year Pop Growth	2.4%	2.7%	3.3%
Projected Households	2,689	10,580	31,143
Projected 5 Year Household Growth	2.4%	2.8%	3.5%



Education (3-Mile)



Daytime Population (3-Mile)

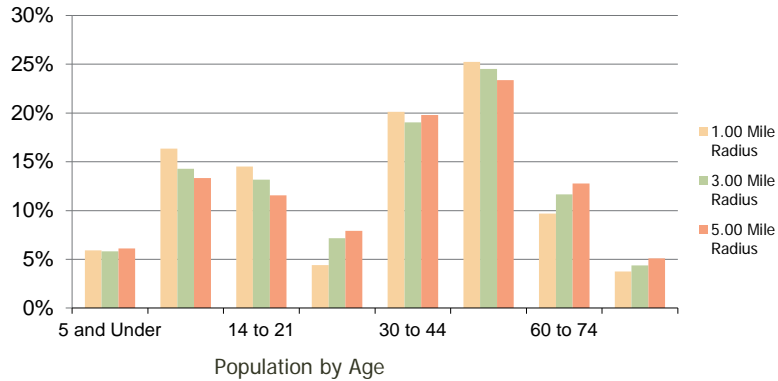


Ethnicity (3-Mile)

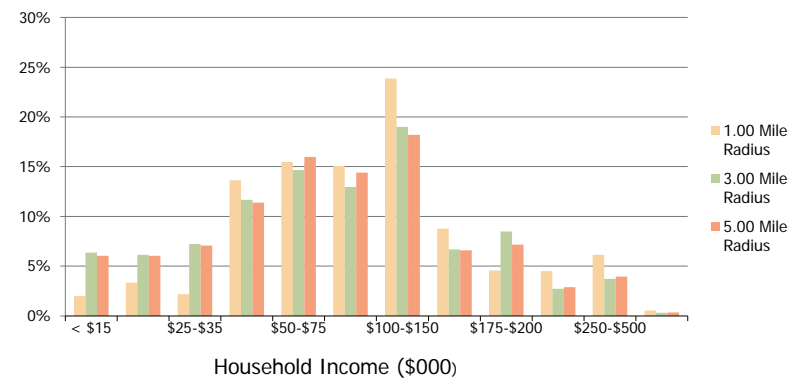
This report was produced using data from private and government sources deemed to be reliable and is herein provided without representation or warranty.

Harpeth Village Franklin, TN	1.00 Mile Radius	3.00 Mile Radius	5.00 Mile Radius
---------------------------------	---------------------	---------------------	---------------------

Population by Age Range



Household Income by Income Range



Population	Current Estimated Population	6,783	25,231	68,687
	2010 Census Population	6,678	24,648	66,268
	2000 Census Population	6,365	21,546	53,194
	Historical Annual Growth 2000 to 2010	0.48%	1.35%	2.22%
	Estimated Annual Growth 2010 to 2011	0.90%	1.34%	2.07%
Households	Projected Annual Growth 2011 to 2016	2.37%	2.75%	3.34%
	Current Estimated Households	2,392	9,213	26,282
	2010 Census Households	2,355	8,997	25,310
	2000 Census Households	2,206	7,776	19,814
	Historical Annual Growth 2000 to 2010	0.7%	1.5%	2.5%
Ethnicity	Estimated Annual Growth 2010 to 2011	0.9%	1.4%	2.2%
	Projected Annual Growth 2011 to 2016	2.4%	2.8%	3.5%
	Population per Household	2.8	2.7	2.6
	White	93.1%	86.3%	85.9%
	Black or African American	1.7%	6.6%	6.3%
	Asian & Pacific Islander	2.7%	2.2%	3.0%
	Other Races	2.4%	4.9%	4.8%
Hispanic or Latino Population	3.4%	7.0%	7.1%	
Non Hispanic or Latino Population	96.6%	93.0%	92.9%	

This report was produced using data from private and government sources deemed to be reliable and is herein provided without representation or warranty.