

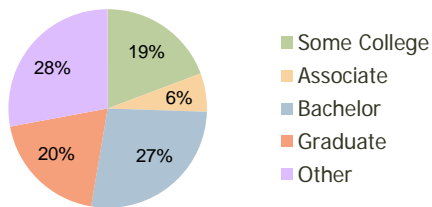
Westbrook Commons Westchester, IL	1.00 Mile Radius	3.00 Mile Radius	5.00 Mile Radius
--------------------------------------	---------------------	---------------------	---------------------

Current Year Demographics

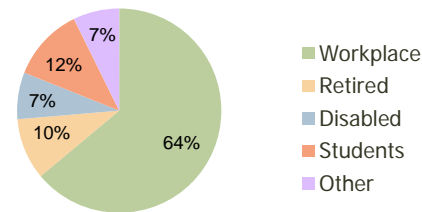
Current Population	5,256	97,214	298,263
Adjusted Total Pop (Carrier Route)	5,157	99,947	306,983
Total Daytime Pop	4,424	146,226	377,269
Workplace Pop	2,355	93,477	216,750
Average Household Income	\$86,070	\$118,051	\$103,039
Median Household Income	\$66,421	\$80,425	\$69,724
Total Housing Units	2,325	36,708	110,355
Median Home Value	\$253,335	\$260,021	\$240,072
Bachelors Degree	21.4%	27.1%	22.8%
Graduate Degree	14.7%	19.4%	15.5%
Total Consumer Spending/Capita	\$321	\$325	\$313

2016 Demographic Projections

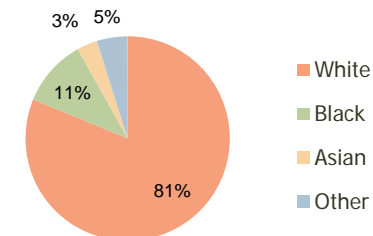
Projected Population	4,984	96,141	290,830
Projected 5 Year Pop Growth	-1.1%	-0.2%	-0.5%
Projected Households	2,196	36,340	108,085
Projected 5 Year Household Growth	-1.1%	-0.2%	-0.4%



Education (3-Mile)



Daytime Population (3-Mile)



Ethnicity (3-Mile)

This report was produced using data from private and government sources deemed to be reliable and is herein provided without representation or warranty.

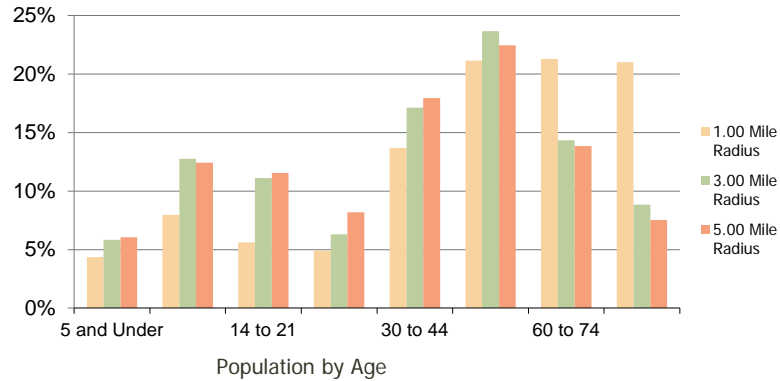
Westbrook Commons
Westchester, IL

1.00 Mile
Radius

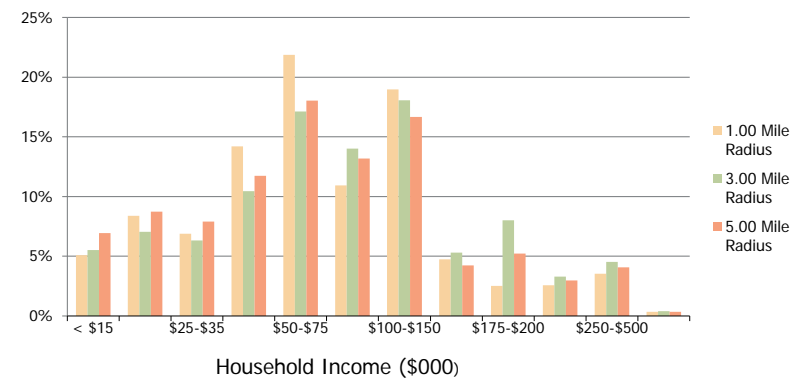
3.00 Mile
Radius

5.00 Mile
Radius

Population by Age Range



Household Income by Income Range



	1.00 Mile Radius	3.00 Mile Radius	5.00 Mile Radius
Population			
Current Estimated Population	5,256	97,214	298,263
2010 Census Population	5,255	96,314	298,039
2000 Census Population	5,232	96,981	303,760
Historical Annual Growth 2000 to 2010	0.04%	-0.07%	-0.19%
Estimated Annual Growth 2010 to 2011	0.02%	0.53%	0.04%
Projected Annual Growth 2011 to 2016	-1.06%	-0.22%	-0.50%
Households			
Current Estimated Households	2,325	36,708	110,355
2010 Census Households	2,324	36,327	110,037
2000 Census Households	2,348	36,883	111,659
Historical Annual Growth 2000 to 2010	-0.1%	-0.2%	-0.1%
Estimated Annual Growth 2010 to 2011	0.0%	0.6%	0.2%
Projected Annual Growth 2011 to 2016	-1.1%	-0.2%	-0.4%
Population per Household	2.2	2.6	2.7
Ethnicity			
White	85.2%	81.2%	69.4%
Black or African American	7.3%	10.7%	17.7%
Asian & Pacific Islander	3.4%	3.2%	4.0%
Other Races	4.1%	4.9%	8.8%
Hispanic or Latino Population	8.6%	9.4%	16.7%
Non Hispanic or Latino Population	91.4%	90.6%	83.3%

This report was produced using data from private and government sources deemed to be reliable and is herein provided without representation or warranty.