

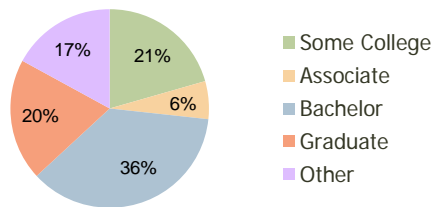
Valleydale Village Hoover, AL	1.00 Mile Radius	3.00 Mile Radius	5.00 Mile Radius
----------------------------------	---------------------	---------------------	---------------------

Current Year Demographics

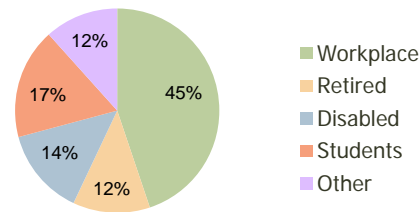
Current Population	3,493	34,902	103,718
Adjusted Total Pop (Carrier Route)	3,201	32,997	109,212
Total Daytime Pop	3,100	27,778	129,860
Workplace Pop	1,404	12,450	79,778
Average Household Income	\$131,747	\$98,625	\$92,209
Median Household Income	\$107,773	\$75,386	\$68,281
Total Housing Units	1,250	13,990	43,924
Median Home Value	\$278,305	\$240,756	\$236,666
Bachelors Degree	34.9%	36.4%	35.0%
Graduate Degree	20.9%	19.8%	19.5%
Total Consumer Spending/Capita	\$315	\$309	\$294

2016 Demographic Projections

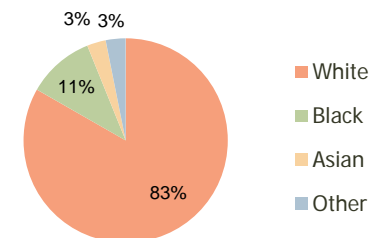
Projected Population	4,173	40,931	117,427
Projected 5 Year Pop Growth	3.6%	3.2%	2.5%
Projected Households	1,494	16,401	49,809
Projected 5 Year Household Growth	3.6%	3.2%	2.5%



Education (3-Mile)



Daytime Population (3-Mile)

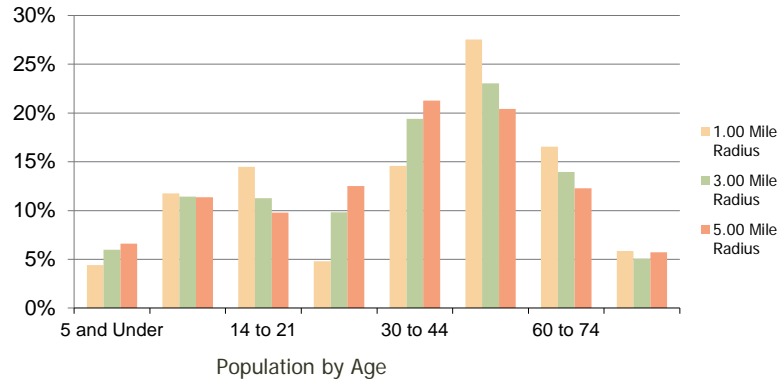


Ethnicity (3-Mile)

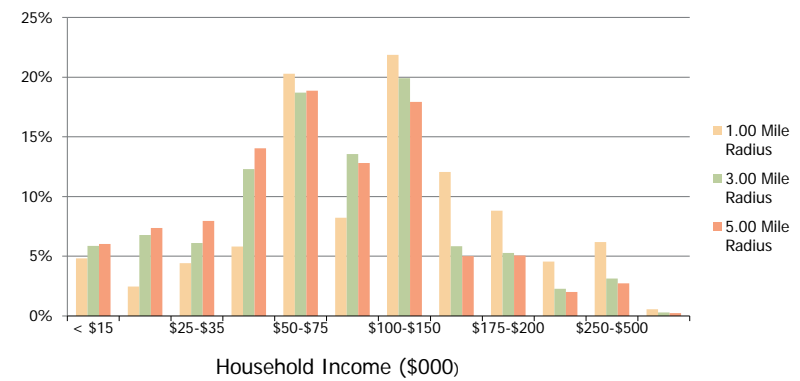
This report was produced using data from private and government sources deemed to be reliable and is herein provided without representation or warranty.

Valleydale Village Hoover, AL	1.00 Mile Radius	3.00 Mile Radius	5.00 Mile Radius
---	------------------	------------------	------------------

Population by Age Range



Household Income by Income Range



	1.00 Mile Radius	3.00 Mile Radius	5.00 Mile Radius
Population			
Current Estimated Population	3,493	34,902	103,718
2010 Census Population	3,359	33,532	101,503
2000 Census Population	3,170	28,584	86,028
Historical Annual Growth 2000 to 2010	0.58%	1.61%	1.67%
Estimated Annual Growth 2010 to 2011	2.27%	2.31%	1.24%
Projected Annual Growth 2011 to 2016	3.62%	3.24%	2.51%
Households			
Current Estimated Households	1,250	13,990	43,924
2010 Census Households	1,201	13,423	42,969
2000 Census Households	1,049	10,896	36,161
Historical Annual Growth 2000 to 2010	1.4%	2.1%	1.7%
Estimated Annual Growth 2010 to 2011	2.3%	2.4%	1.3%
Projected Annual Growth 2011 to 2016	3.6%	3.2%	2.5%
Population per Household	2.8	2.5	2.3
Ethnicity			
White	93.9%	83.3%	77.8%
Black or African American	2.3%	10.6%	13.0%
Asian & Pacific Islander	2.3%	3.0%	4.1%
Other Races	1.5%	3.1%	5.0%
Hispanic or Latino Population	1.8%	4.1%	6.7%
Non Hispanic or Latino Population	98.2%	95.9%	93.3%

This report was produced using data from private and government sources deemed to be reliable and is herein provided without representation or warranty.