

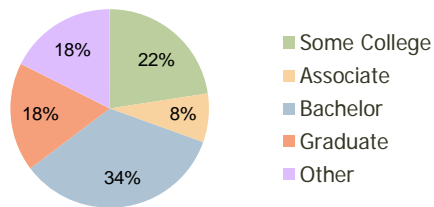
Shops at John's Creek Jacksonville, FL	1.00 Mile Radius	3.00 Mile Radius	5.00 Mile Radius
---	---------------------	---------------------	---------------------

### Current Year Demographics

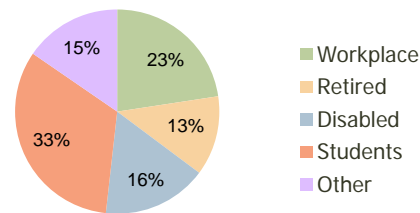
Current Population	3,945	11,889	30,710
Adjusted Total Pop (Carrier Route)	5,334	14,989	37,905
Total Daytime Pop	4,028	10,366	20,683
Workplace Pop	848	2,343	6,166
Average Household Income	\$110,065	\$109,509	\$107,939
Median Household Income	\$95,753	\$94,528	\$92,785
Total Housing Units	1,366	4,096	10,585
Median Home Value	\$243,077	\$241,394	\$229,070
Bachelors Degree	35.0%	34.2%	34.9%
Graduate Degree	18.5%	17.7%	15.3%
Total Consumer Spending/Capita	\$0	\$0	\$265

### 2016 Demographic Projections

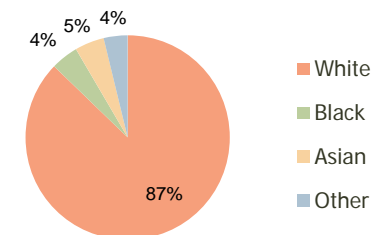
Projected Population	5,327	16,018	40,566
Projected 5 Year Pop Growth	6.2%	6.1%	5.7%
Projected Households	1,846	5,526	13,957
Projected 5 Year Household Growth	6.2%	6.2%	5.7%



Education (3-Mile)



Daytime Population (3-Mile)



Ethnicity (3-Mile)

This report was produced using data from private and government sources deemed to be reliable and is herein provided without representation or warranty.

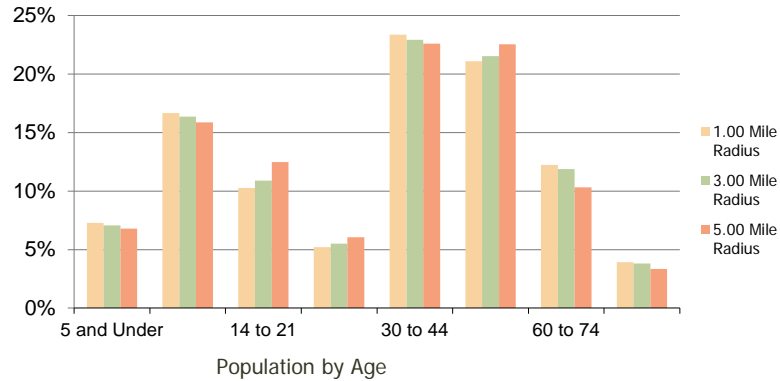
## Shops at John's Creek Jacksonville, FL

1.00 Mile  
Radius

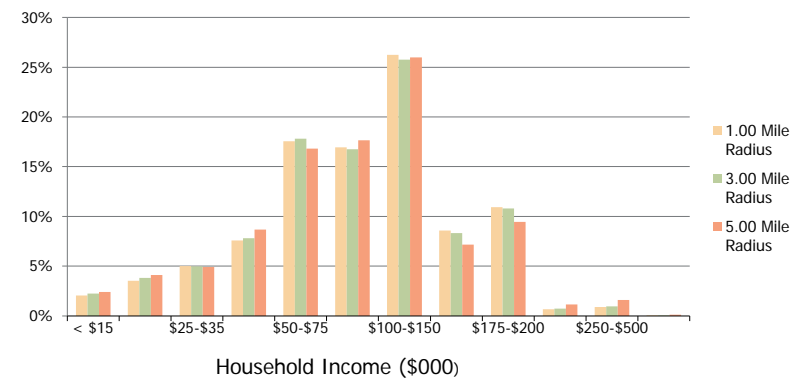
3.00 Mile  
Radius

5.00 Mile  
Radius

### Population by Age Range



### Household Income by Income Range



	1.00 Mile Radius	3.00 Mile Radius	5.00 Mile Radius
<b>Population</b>			
Current Estimated Population	3,945	11,889	30,710
2010 Census Population	3,681	11,111	28,888
2000 Census Population	658	2,248	7,993
Historical Annual Growth 2000 to 2010	18.80%	17.33%	13.71%
Estimated Annual Growth 2010 to 2011	4.03%	3.95%	3.56%
Projected Annual Growth 2011 to 2016	6.19%	6.14%	5.73%
<b>Households</b>			
Current Estimated Households	1,366	4,096	10,585
2010 Census Households	1,274	3,826	9,956
2000 Census Households	243	802	2,650
Historical Annual Growth 2000 to 2010	18.0%	16.9%	14.2%
Estimated Annual Growth 2010 to 2011	4.1%	4.0%	3.6%
Projected Annual Growth 2011 to 2016	6.2%	6.2%	5.7%
Population per Household	2.9	2.9	2.9
<b>Ethnicity</b>			
White	87.1%	87.2%	86.5%
Black or African American	4.2%	4.3%	4.9%
Asian & Pacific Islander	4.9%	4.6%	4.8%
Other Races	3.8%	3.8%	3.8%
Hispanic or Latino Population	6.5%	6.5%	6.8%
Non Hispanic or Latino Population	93.5%	93.5%	93.2%

This report was produced using data from private and government sources deemed to be reliable and is herein provided without representation or warranty.