

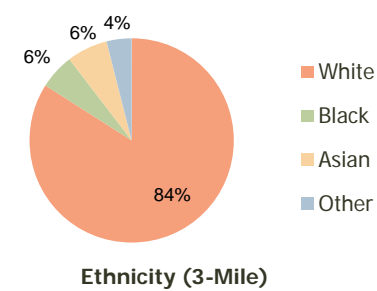
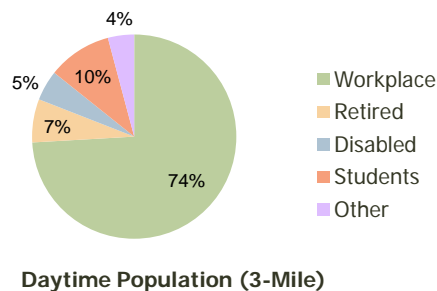
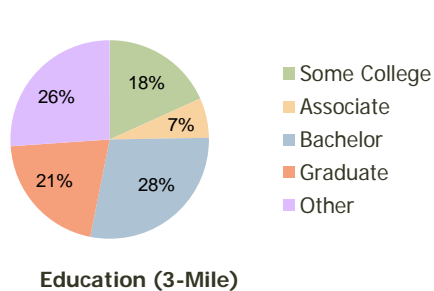
Regency Commons Blue Ash, OH	1.00 Mile Radius	3.00 Mile Radius	5.00 Mile Radius
---------------------------------	---------------------	---------------------	---------------------

### Current Year Demographics

Current Population	3,044	45,085	135,812
Adjusted Total Pop (Carrier Route)	4,353	48,441	142,096
Total Daytime Pop	17,520	93,288	227,415
Workplace Pop	15,924	69,123	151,137
Average Household Income	\$82,006	\$101,001	\$94,754
Median Household Income	\$63,294	\$77,226	\$71,305
Total Housing Units	1,278	18,413	54,533
Median Home Value	\$155,557	\$186,523	\$168,097
Bachelors Degree	21.4%	28.4%	26.7%
Graduate Degree	19.3%	20.8%	18.4%
Total Consumer Spending/Capita	\$280	\$295	\$289

### 2016 Demographic Projections

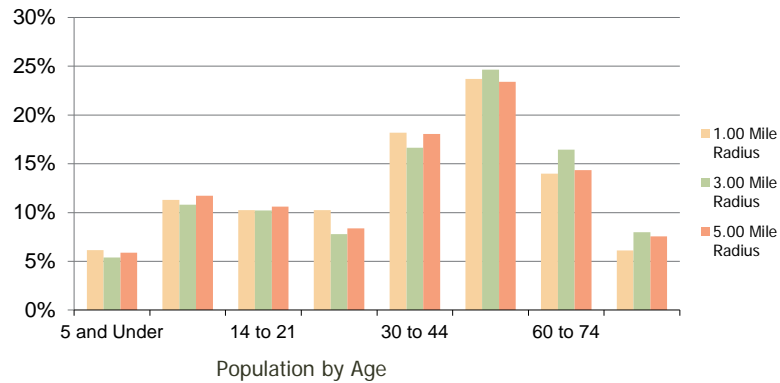
Projected Population	2,948	45,927	138,712
Projected 5 Year Pop Growth	-0.6%	0.4%	0.4%
Projected Households	1,239	18,714	55,450
Projected 5 Year Household Growth	-0.6%	0.3%	0.3%



This report was produced using data from private and government sources deemed to be reliable and is herein provided without representation or warranty.

Regency Commons Blue Ash, OH	1.00 Mile Radius	3.00 Mile Radius	5.00 Mile Radius
---------------------------------	---------------------	---------------------	---------------------

**Population by Age Range**



**Household Income by Income Range**



	1.00 Mile Radius	3.00 Mile Radius	5.00 Mile Radius
<b>Population</b>			
Current Estimated Population	3,044	45,085	135,812
2010 Census Population	3,199	45,393	136,161
2000 Census Population	3,089	47,159	133,985
Historical Annual Growth 2000 to 2010	0.35%	-0.38%	0.16%
Estimated Annual Growth 2010 to 2011	-2.80%	-0.39%	-0.15%
Projected Annual Growth 2011 to 2016	-0.64%	0.37%	0.42%
<b>Households</b>			
Current Estimated Households	1,278	18,413	54,533
2010 Census Households	1,341	18,548	54,707
2000 Census Households	1,281	18,370	52,079
Historical Annual Growth 2000 to 2010	0.5%	0.1%	0.5%
Estimated Annual Growth 2010 to 2011	-2.7%	-0.4%	-0.2%
Projected Annual Growth 2011 to 2016	-0.6%	0.3%	0.3%
Population per Household	2.4	2.4	2.5
<b>Ethnicity</b>			
White	73.7%	84.0%	82.1%
Black or African American	14.9%	5.6%	7.8%
Asian & Pacific Islander	6.1%	6.4%	6.3%
Other Races	5.3%	4.0%	3.9%
Hispanic or Latino Population	4.5%	3.5%	3.8%
Non Hispanic or Latino Population	95.5%	96.5%	96.2%

This report was produced using data from private and government sources deemed to be reliable and is herein provided without representation or warranty.