

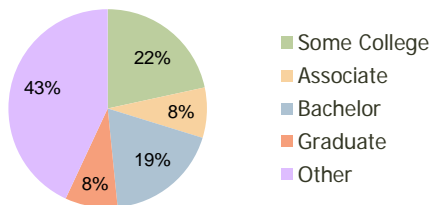
Greenwood Springs Greenwood Springs, IN	1.00 Mile Radius	3.00 Mile Radius	5.00 Mile Radius
--	---------------------	---------------------	---------------------

Current Year Demographics

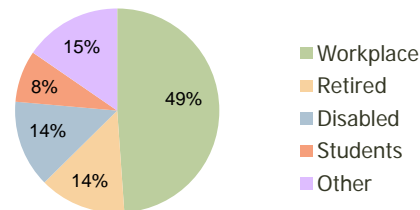
Current Population	2,100	64,489	149,593
Adjusted Total Pop (Carrier Route)	1,995	65,133	154,562
Total Daytime Pop	3,087	50,481	121,291
Workplace Pop	1,878	24,680	49,121
Average Household Income	\$60,447	\$62,776	\$67,126
Median Household Income	\$55,667	\$51,328	\$56,378
Total Housing Units	952	26,611	59,347
Median Home Value	\$105,442	\$120,301	\$125,216
Bachelors Degree	18.2%	18.6%	19.3%
Graduate Degree	6.3%	8.6%	8.1%
Total Consumer Spending/Capita	\$247	\$254	\$258

2016 Demographic Projections

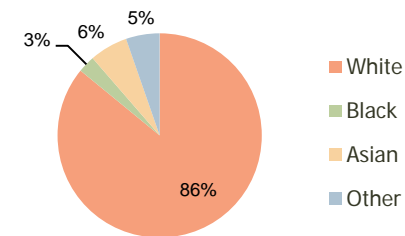
Projected Population	2,161	70,939	162,500
Projected 5 Year Pop Growth	0.6%	1.9%	1.7%
Projected Households	979	29,420	64,554
Projected 5 Year Household Growth	0.6%	2.0%	1.7%



Education (3-Mile)



Daytime Population (3-Mile)

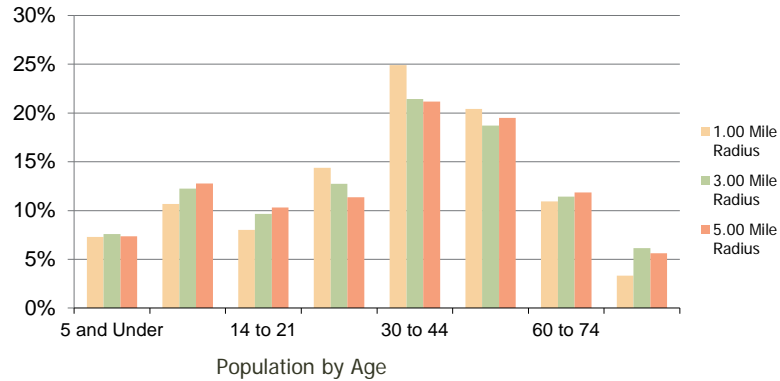


Ethnicity (3-Mile)

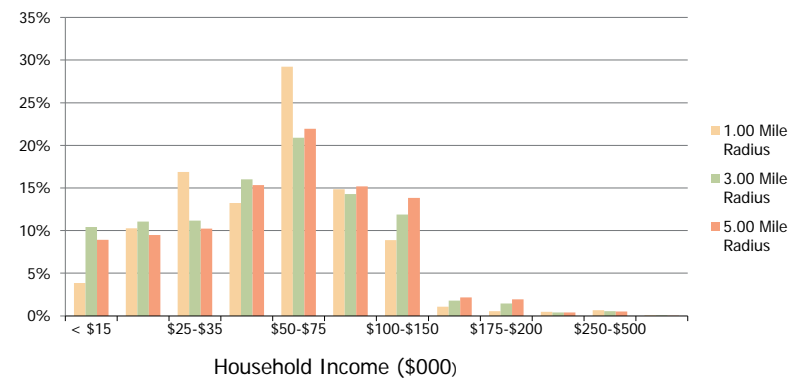
This report was produced using data from private and government sources deemed to be reliable and is herein provided without representation or warranty.

Greenwood Springs Greenwood Springs, IN	1.00 Mile Radius	3.00 Mile Radius	5.00 Mile Radius
---	------------------	------------------	------------------

Population by Age Range



Household Income by Income Range



	1.00 Mile Radius	3.00 Mile Radius	5.00 Mile Radius
Population			
Current Estimated Population	2,100	64,489	149,593
2010 Census Population	2,105	62,688	147,379
2000 Census Population	1,830	48,954	116,329
Historical Annual Growth 2000 to 2010	1.41%	2.50%	2.39%
Estimated Annual Growth 2010 to 2011	-0.13%	1.63%	0.86%
Projected Annual Growth 2011 to 2016	0.58%	1.92%	1.67%
Households			
Current Estimated Households	952	26,611	59,347
2010 Census Households	953	25,829	58,413
2000 Census Households	805	20,853	47,155
Historical Annual Growth 2000 to 2010	1.7%	2.2%	2.2%
Estimated Annual Growth 2010 to 2011	-0.1%	1.7%	0.9%
Projected Annual Growth 2011 to 2016	0.6%	2.0%	1.7%
Population per Household	2.2	2.4	2.5
Ethnicity			
White	90.2%	85.9%	88.7%
Black or African American	1.9%	2.7%	2.4%
Asian & Pacific Islander	4.4%	6.0%	4.3%
Other Races	3.5%	5.3%	4.7%
Hispanic or Latino Population	3.2%	5.6%	4.9%
Non Hispanic or Latino Population	96.8%	94.4%	95.1%

This report was produced using data from private and government sources deemed to be reliable and is herein provided without representation or warranty.