

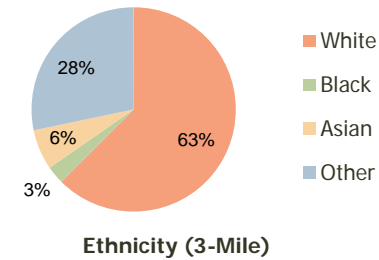
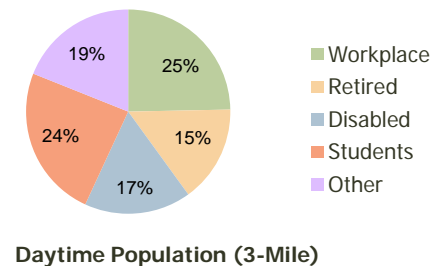
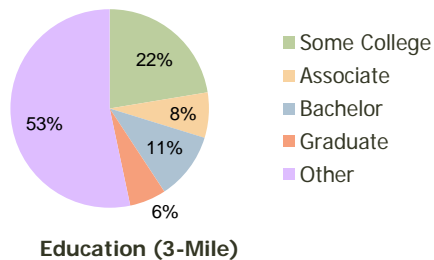
Plaza Rio Vista Cathedral City, CA	1.00 Mile Radius	3.00 Mile Radius	5.00 Mile Radius
---------------------------------------	---------------------	---------------------	---------------------

### Current Year Demographics

Current Population	10,211	52,033	101,280
Adjusted Total Pop (Carrier Route)	11,058	60,494	117,630
Total Daytime Pop	5,046	40,122	98,564
Workplace Pop	258	9,897	34,436
Average Household Income	\$66,295	\$64,668	\$69,450
Median Household Income	\$51,455	\$47,908	\$47,292
Total Housing Units	3,486	16,799	41,397
Median Home Value	\$205,709	\$203,760	\$203,767
Bachelors Degree	12.1%	11.0%	14.9%
Graduate Degree	8.5%	5.9%	9.6%
Total Consumer Spending/Capita	\$287	\$276	\$280

### 2016 Demographic Projections

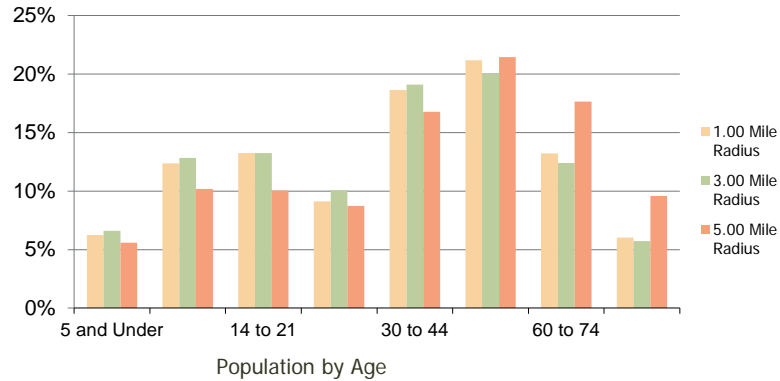
Projected Population	11,840	60,000	116,147
Projected 5 Year Pop Growth	3.0%	2.9%	2.8%
Projected Households	4,080	19,164	47,220
Projected 5 Year Household Growth	3.2%	2.7%	2.7%



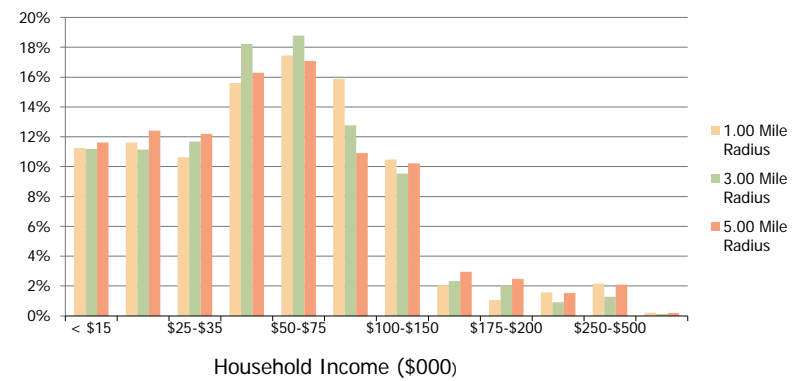
This report was produced using data from private and government sources deemed to be reliable and is herein provided without representation or warranty.

<b>Plaza Rio Vista</b> Cathedral City, CA	1.00 Mile Radius	3.00 Mile Radius	5.00 Mile Radius
--	------------------	------------------	------------------

**Population by Age Range**



**Household Income by Income Range**



	1.00 Mile Radius	3.00 Mile Radius	5.00 Mile Radius
<b>Population</b>			
Current Estimated Population	10,211	52,033	101,280
2010 Census Population	9,842	49,885	97,117
2000 Census Population	7,165	41,373	84,431
Historical Annual Growth 2000 to 2010	3.22%	1.89%	1.41%
Estimated Annual Growth 2010 to 2011	2.13%	2.44%	2.43%
Projected Annual Growth 2011 to 2016	3.00%	2.89%	2.78%
<b>Households</b>			
Current Estimated Households	3,486	16,799	41,397
2010 Census Households	3,343	16,181	39,727
2000 Census Households	2,366	13,174	33,648
Historical Annual Growth 2000 to 2010	3.5%	2.1%	1.7%
Estimated Annual Growth 2010 to 2011	2.4%	2.2%	2.4%
Projected Annual Growth 2011 to 2016	3.2%	2.7%	2.7%
Population per Household	2.9	3.1	2.4
<b>Ethnicity</b>			
White	68.2%	62.5%	68.8%
Black or African American	3.7%	2.8%	3.4%
Asian & Pacific Islander	6.0%	6.4%	4.8%
Other Races	22.1%	28.3%	23.0%
Hispanic or Latino Population	47.0%	57.6%	44.3%
Non Hispanic or Latino Population	53.0%	42.4%	55.7%

This report was produced using data from private and government sources deemed to be reliable and is herein provided without representation or warranty.