

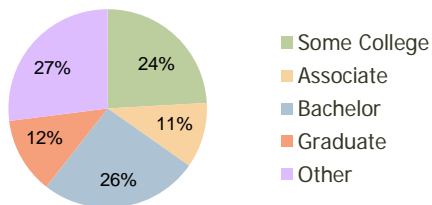
Horton's Corner St Johns County, FL	1.00 Mile Radius	3.00 Mile Radius	5.00 Mile Radius
--	---------------------	---------------------	---------------------

Current Year Demographics

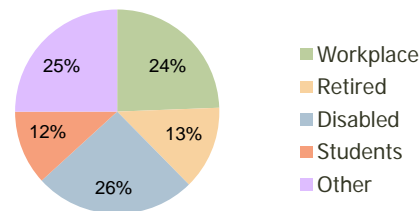
Current Population	3,014	13,915	19,216
Adjusted Total Pop (Carrier Route)	3,207	14,271	17,765
Total Daytime Pop	1,073	6,815	8,943
Workplace Pop	282	1,662	2,244
Average Household Income	\$87,986	\$89,355	\$88,534
Median Household Income	\$75,289	\$75,959	\$75,052
Total Housing Units	1,022	4,701	6,576
Median Home Value	\$168,812	\$176,949	\$175,902
Bachelors Degree	26.1%	25.9%	24.9%
Graduate Degree	12.2%	12.4%	11.9%
Total Consumer Spending/Capita	\$0	\$0	\$0

2016 Demographic Projections

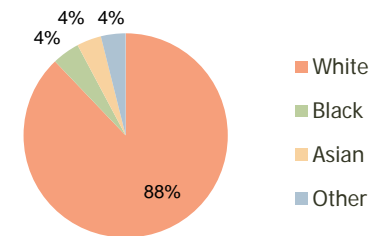
Projected Population	3,879	17,939	24,763
Projected 5 Year Pop Growth	5.2%	5.2%	5.2%
Projected Households	1,316	6,069	8,484
Projected 5 Year Household Growth	5.2%	5.2%	5.2%



Education (3-Mile)



Daytime Population (3-Mile)



Ethnicity (3-Mile)

This report was produced using data from private and government sources deemed to be reliable and is herein provided without representation or warranty.

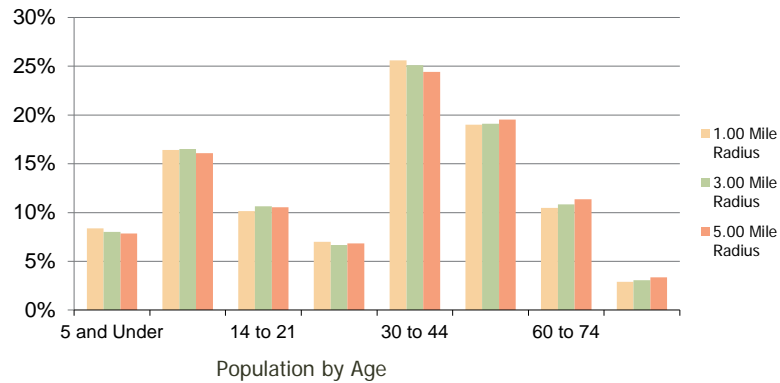
Horton's Corner
St Johns County, FL

1.00 Mile
Radius

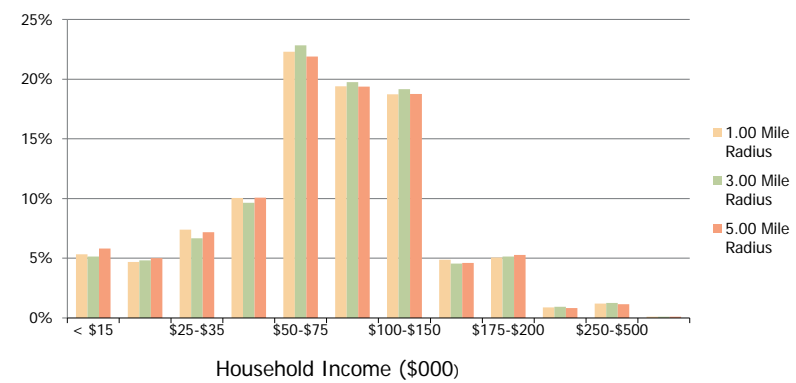
3.00 Mile
Radius

5.00 Mile
Radius

Population by Age Range



Household Income by Income Range



	1.00 Mile Radius	3.00 Mile Radius	5.00 Mile Radius
Population			
Current Estimated Population	3,014	13,915	19,216
2010 Census Population	2,885	13,300	18,371
2000 Census Population	416	2,033	3,795
Historical Annual Growth 2000 to 2010	21.38%	20.66%	17.08%
Estimated Annual Growth 2010 to 2011	2.54%	2.62%	2.60%
Projected Annual Growth 2011 to 2016	5.18%	5.21%	5.20%
Households			
Current Estimated Households	1,022	4,701	6,576
2010 Census Households	978	4,491	6,285
2000 Census Households	139	682	1,308
Historical Annual Growth 2000 to 2010	21.5%	20.7%	17.0%
Estimated Annual Growth 2010 to 2011	2.6%	2.6%	2.6%
Projected Annual Growth 2011 to 2016	5.2%	5.2%	5.2%
Population per Household	2.9	2.9	2.9
Ethnicity			
White	87.1%	87.9%	88.1%
Black or African American	4.5%	4.3%	4.3%
Asian & Pacific Islander	4.2%	3.9%	3.7%
Other Races	4.2%	3.9%	3.9%
Hispanic or Latino Population	8.1%	7.4%	7.2%
Non Hispanic or Latino Population	91.9%	92.6%	92.8%

This report was produced using data from private and government sources deemed to be reliable and is herein provided without representation or warranty.