

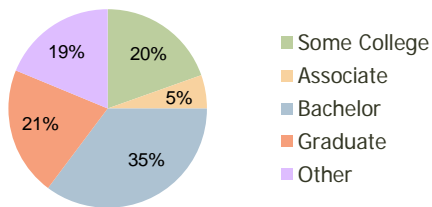
Trace Crossing Hoover, AL	1.00 Mile Radius	3.00 Mile Radius	5.00 Mile Radius
------------------------------	---------------------	---------------------	---------------------

Current Year Demographics

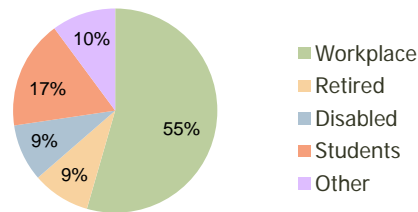
Current Population	4,951	36,711	98,061
Adjusted Total Pop (Carrier Route)	4,742	38,798	100,052
Total Daytime Pop	6,398	41,560	101,333
Workplace Pop	3,525	22,638	56,068
Average Household Income	\$105,106	\$96,131	\$84,095
Median Household Income	\$79,886	\$78,283	\$66,136
Total Housing Units	1,935	14,712	39,394
Median Home Value	\$307,251	\$215,404	\$186,616
Bachelors Degree	37.6%	35.2%	32.6%
Graduate Degree	19.3%	21.0%	17.9%
Total Consumer Spending/Capita	\$0	\$275	\$278

2016 Demographic Projections

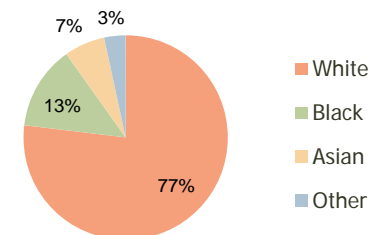
Projected Population	5,287	39,948	107,007
Projected 5 Year Pop Growth	1.3%	1.7%	1.8%
Projected Households	2,070	16,057	43,037
Projected 5 Year Household Growth	1.4%	1.8%	1.8%



Education (3-Mile)



Daytime Population (3-Mile)

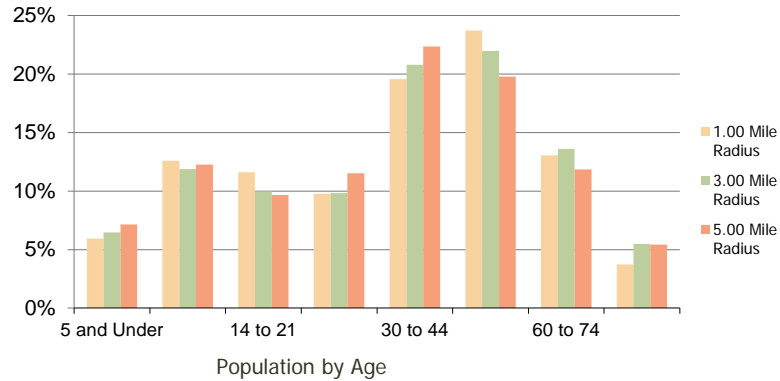


Ethnicity (3-Mile)

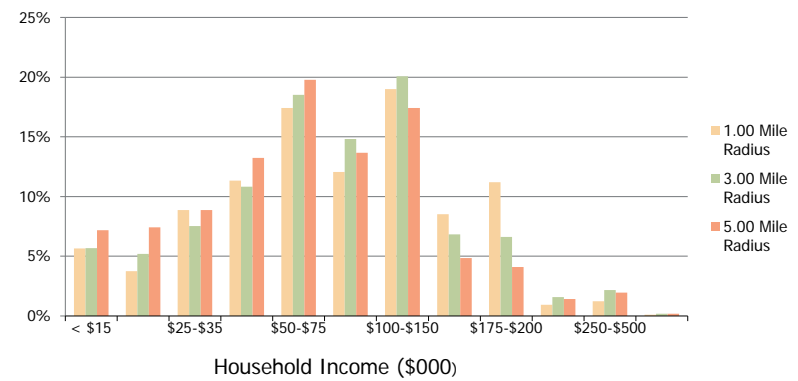
This report was produced using data from private and government sources deemed to be reliable and is herein provided without representation or warranty.

Trace Crossing Hoover, AL	1.00 Mile Radius	3.00 Mile Radius	5.00 Mile Radius
------------------------------	---------------------	---------------------	---------------------

Population by Age Range



Household Income by Income Range



	1.00 Mile Radius	3.00 Mile Radius	5.00 Mile Radius
Population			
Current Estimated Population	4,951	36,711	98,061
2010 Census Population	4,860	35,914	96,536
2000 Census Population	3,404	28,344	78,049
Historical Annual Growth 2000 to 2010	3.63%	2.40%	2.15%
Estimated Annual Growth 2010 to 2011	1.06%	1.26%	0.90%
Projected Annual Growth 2011 to 2016	1.32%	1.70%	1.76%
Households			
Current Estimated Households	1,935	14,712	39,394
2010 Census Households	1,898	14,369	38,772
2000 Census Households	1,306	11,208	31,914
Historical Annual Growth 2000 to 2010	3.8%	2.5%	2.0%
Estimated Annual Growth 2010 to 2011	1.1%	1.4%	0.9%
Projected Annual Growth 2011 to 2016	1.4%	1.8%	1.8%
Population per Household	2.6	2.5	2.5
Ethnicity			
White	76.1%	76.9%	73.5%
Black or African American	14.4%	13.2%	15.8%
Asian & Pacific Islander	6.7%	6.4%	4.7%
Other Races	2.8%	3.4%	5.9%
Hispanic or Latino Population	2.6%	4.1%	8.0%
Non Hispanic or Latino Population	97.4%	95.9%	92.0%

This report was produced using data from private and government sources deemed to be reliable and is herein provided without representation or warranty.