

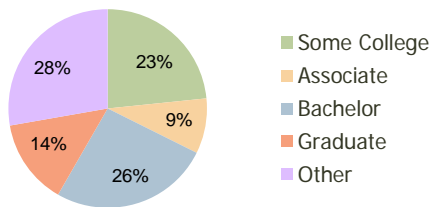
NorthGate Village Greeley, CO	1.00 Mile Radius	3.00 Mile Radius	5.00 Mile Radius
----------------------------------	---------------------	---------------------	---------------------

Current Year Demographics

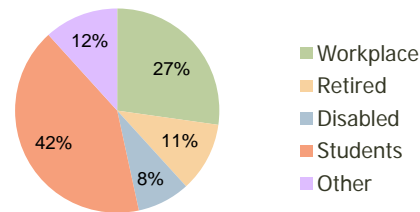
Current Population	2,572	31,711	79,897
Adjusted Total Pop (Carrier Route)	2,705	30,803	78,311
Total Daytime Pop	3,153	31,280	72,597
Workplace Pop	1,133	8,515	22,020
Average Household Income	\$94,091	\$87,462	\$66,783
Median Household Income	\$86,847	\$72,188	\$52,226
Total Housing Units	983	12,012	29,928
Median Home Value	\$222,003	\$173,038	\$143,712
Bachelors Degree	27.7%	26.0%	19.8%
Graduate Degree	12.7%	13.9%	9.8%
Total Consumer Spending/Capita	\$0	\$278	\$264

2016 Demographic Projections

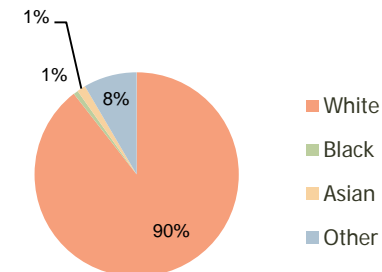
Projected Population	3,113	36,167	91,529
Projected 5 Year Pop Growth	3.9%	2.7%	2.8%
Projected Households	1,192	13,738	34,415
Projected 5 Year Household Growth	3.9%	2.7%	2.8%



Education (3-Mile)



Daytime Population (3-Mile)

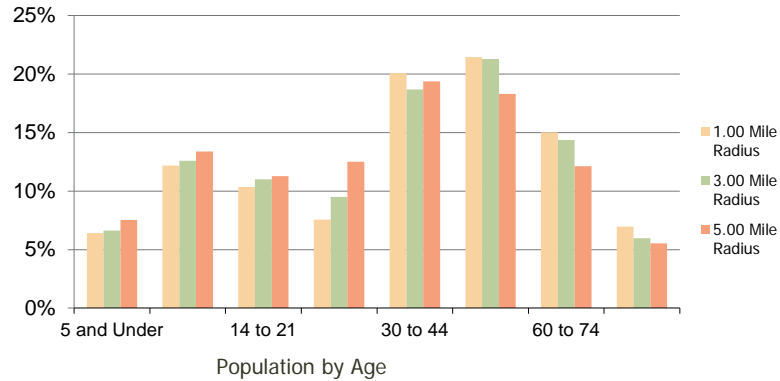


Ethnicity (3-Mile)

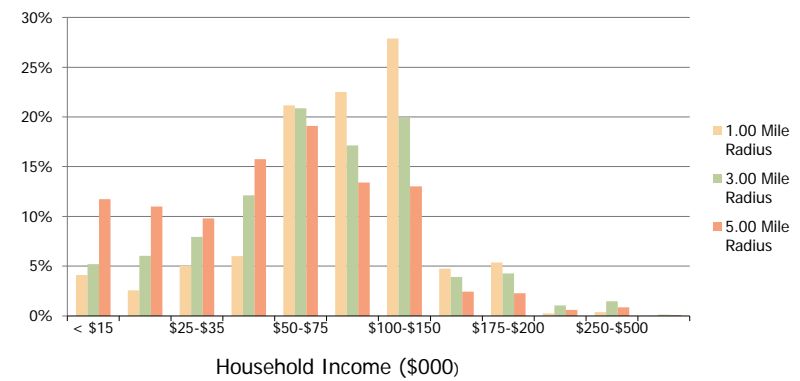
This report was produced using data from private and government sources deemed to be reliable and is herein provided without representation or warranty.

NorthGate Village Greeley, CO	1.00 Mile Radius	3.00 Mile Radius	5.00 Mile Radius
----------------------------------	---------------------	---------------------	---------------------

Population by Age Range



Household Income by Income Range



Population	Current Estimated Population	2,572	31,711	79,897
	2010 Census Population	2,418	30,867	77,683
	2000 Census Population	578	20,592	58,840
	Historical Annual Growth 2000 to 2010	15.38%	4.13%	2.82%
	Estimated Annual Growth 2010 to 2011	3.59%	1.55%	1.62%
Households	Projected Annual Growth 2011 to 2016	3.89%	2.66%	2.76%
	Current Estimated Households	983	12,012	29,928
	2010 Census Households	923	11,678	29,050
	2000 Census Households	192	7,617	22,081
	Historical Annual Growth 2000 to 2010	17.0%	4.4%	2.8%
Ethnicity	Estimated Annual Growth 2010 to 2011	3.7%	1.6%	1.7%
	Projected Annual Growth 2011 to 2016	3.9%	2.7%	2.8%
	Population per Household	2.6	2.6	2.6
	White	92.2%	89.5%	82.0%
	Black or African American	0.4%	0.7%	1.0%
	Asian & Pacific Islander	1.3%	1.4%	1.3%
	Other Races	6.1%	8.4%	15.7%
Hispanic or Latino Population	13.6%	17.5%	31.0%	
Non Hispanic or Latino Population	86.4%	82.5%	69.0%	

This report was produced using data from private and government sources deemed to be reliable and is herein provided without representation or warranty.