

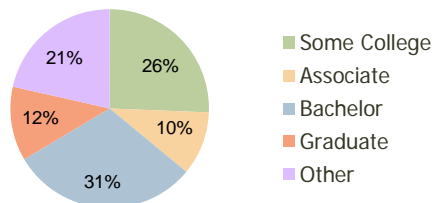
Julington Village Jacksonville, FL	1.00 Mile Radius	3.00 Mile Radius	5.00 Mile Radius
--	---------------------	---------------------	---------------------

Current Year Demographics

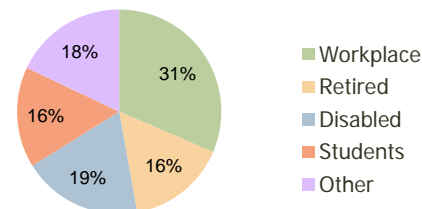
Current Population	5,520	40,844	94,118
Adjusted Total Pop (Carrier Route)	5,760	38,392	96,958
Total Daytime Pop	4,320	25,086	63,985
Workplace Pop	1,421	7,893	20,643
Average Household Income	\$101,939	\$106,344	\$95,166
Median Household Income	\$85,455	\$85,940	\$77,752
Total Housing Units	1,976	14,979	35,633
Median Home Value	\$231,839	\$206,293	\$177,970
Bachelors Degree	30.8%	30.5%	27.4%
Graduate Degree	10.5%	12.0%	10.9%
Total Consumer Spending/Capita	\$310	\$285	\$284

2016 Demographic Projections

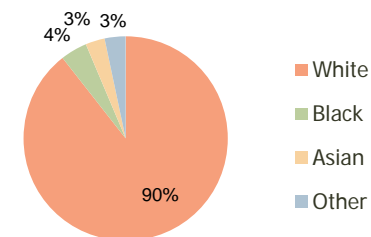
Projected Population	7,239	49,575	109,588
Projected 5 Year Pop Growth	5.6%	4.0%	3.1%
Projected Households	2,592	18,058	41,149
Projected 5 Year Household Growth	5.6%	3.8%	2.9%



Education (3-Mile)



Daytime Population (3-Mile)

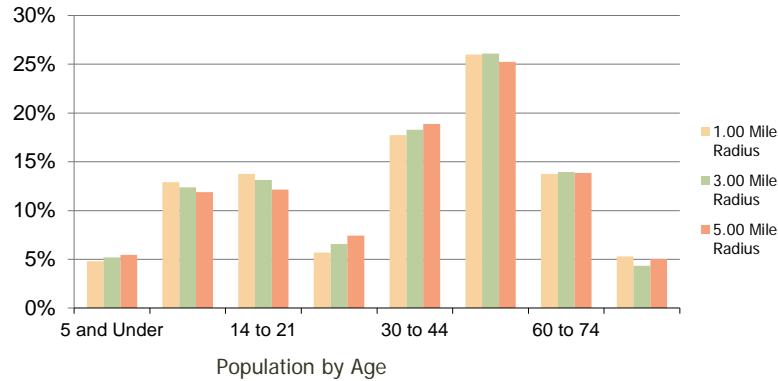


Ethnicity (3-Mile)

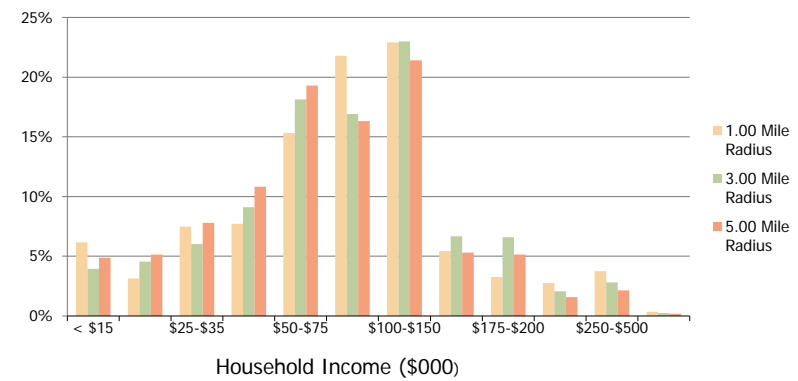
This report was produced using data from private and government sources deemed to be reliable and is herein provided without representation or warranty.

Julington Village Jacksonville, FL	1.00 Mile Radius	3.00 Mile Radius	5.00 Mile Radius
--	------------------	------------------	------------------

Population by Age Range



Household Income by Income Range



	1.00 Mile Radius	3.00 Mile Radius	5.00 Mile Radius
Population			
Current Estimated Population	5,520	40,844	94,118
2010 Census Population	5,261	39,476	91,879
2000 Census Population	3,694	27,850	72,778
Historical Annual Growth 2000 to 2010	3.60%	3.55%	2.36%
Estimated Annual Growth 2010 to 2011	2.78%	1.97%	1.39%
Projected Annual Growth 2011 to 2016	5.57%	3.95%	3.09%
Households			
Current Estimated Households	1,976	14,979	35,633
2010 Census Households	1,883	14,494	34,830
2000 Census Households	1,272	9,661	26,645
Historical Annual Growth 2000 to 2010	4.0%	4.1%	2.7%
Estimated Annual Growth 2010 to 2011	2.8%	1.9%	1.3%
Projected Annual Growth 2011 to 2016	5.6%	3.8%	2.9%
Population per Household	2.8	2.7	2.6
Ethnicity			
White	91.8%	89.4%	87.1%
Black or African American	2.8%	4.2%	5.5%
Asian & Pacific Islander	2.4%	3.0%	3.6%
Other Races	3.0%	3.3%	3.8%
Hispanic or Latino Population	4.5%	5.8%	6.6%
Non Hispanic or Latino Population	95.5%	94.2%	93.4%

This report was produced using data from private and government sources deemed to be reliable and is herein provided without representation or warranty.