

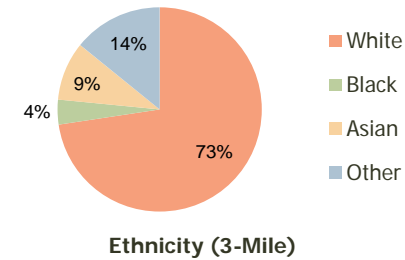
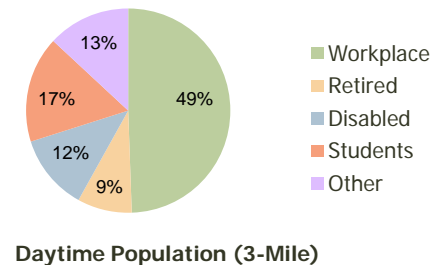
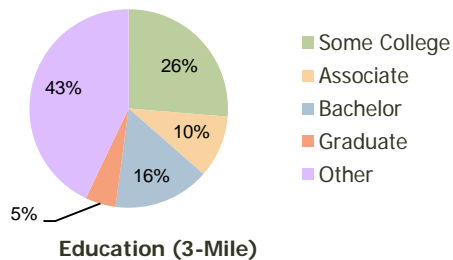
Cascade Plaza Everett, WA	1.00 Mile Radius	3.00 Mile Radius	5.00 Mile Radius
------------------------------	---------------------	---------------------	---------------------

### Current Year Demographics

Current Population	16,813	93,934	195,704
Adjusted Total Pop (Carrier Route)	19,441	96,644	197,574
Total Daytime Pop	18,117	94,959	202,587
Workplace Pop	8,312	46,959	102,196
Average Household Income	\$57,535	\$64,234	\$71,818
Median Household Income	\$51,344	\$53,869	\$59,290
Total Housing Units	6,368	36,823	76,314
Median Home Value	\$202,184	\$233,929	\$263,786
Bachelors Degree	14.0%	15.7%	18.9%
Graduate Degree	2.2%	5.0%	7.5%
Total Consumer Spending/Capita	\$273	\$279	\$285

### 2016 Demographic Projections

Projected Population	16,977	96,614	205,497
Projected 5 Year Pop Growth	0.2%	0.6%	1.0%
Projected Households	6,434	37,852	80,263
Projected 5 Year Household Growth	0.2%	0.6%	1.0%



This report was produced using data from private and government sources deemed to be reliable and is herein provided without representation or warranty.

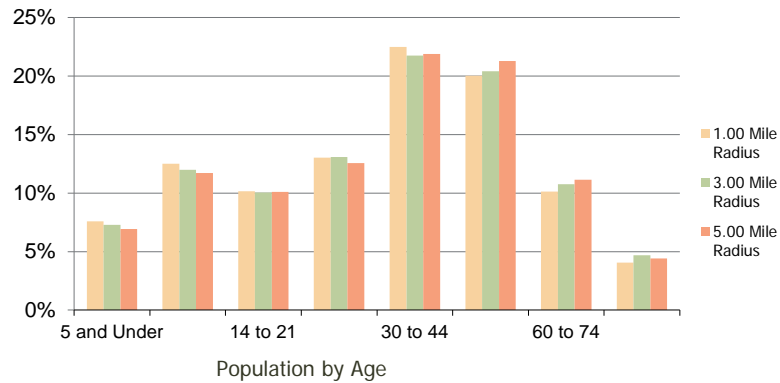
**Cascade Plaza**  
Everett, WA

1.00 Mile  
Radius

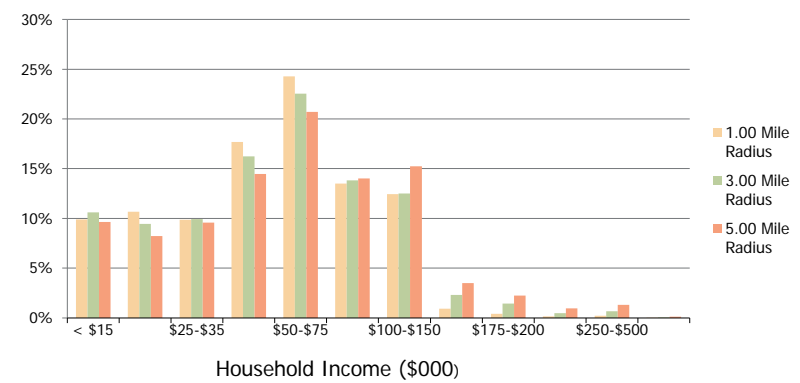
3.00 Mile  
Radius

5.00 Mile  
Radius

**Population by Age Range**



**Household Income by Income Range**



	1.00 Mile Radius	3.00 Mile Radius	5.00 Mile Radius
<b>Population</b>			
Current Estimated Population	16,813	93,934	195,704
2010 Census Population	16,692	93,120	193,749
2000 Census Population	15,215	83,487	163,808
Historical Annual Growth 2000 to 2010	0.93%	1.10%	1.69%
Estimated Annual Growth 2010 to 2011	0.41%	0.50%	0.58%
Projected Annual Growth 2011 to 2016	0.19%	0.56%	0.98%
<b>Households</b>			
Current Estimated Households	6,368	36,823	76,314
2010 Census Households	6,313	36,490	75,412
2000 Census Households	5,904	32,700	63,849
Historical Annual Growth 2000 to 2010	0.7%	1.1%	1.7%
Estimated Annual Growth 2010 to 2011	0.5%	0.5%	0.7%
Projected Annual Growth 2011 to 2016	0.2%	0.6%	1.0%
Population per Household	2.6	2.5	2.5
<b>Ethnicity</b>			
White	71.9%	72.6%	73.5%
Black or African American	3.9%	3.9%	3.7%
Asian & Pacific Islander	8.6%	9.3%	10.8%
Other Races	15.6%	14.2%	12.0%
Hispanic or Latino Population	19.7%	15.4%	12.1%
Non Hispanic or Latino Population	80.3%	84.6%	87.9%

This report was produced using data from private and government sources deemed to be reliable and is herein provided without representation or warranty.